

1.27mm×1.27mm (0.05"×0.05") SMD Female Header (Dual Row)

0154D Series

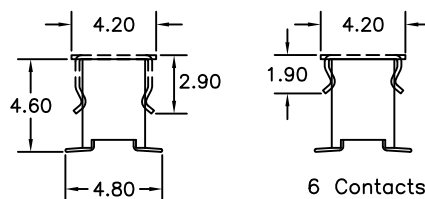
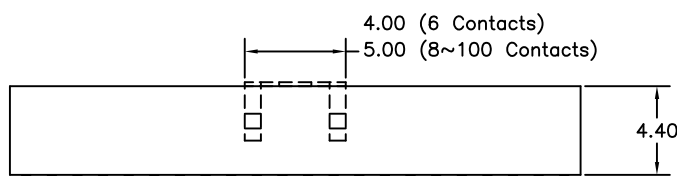
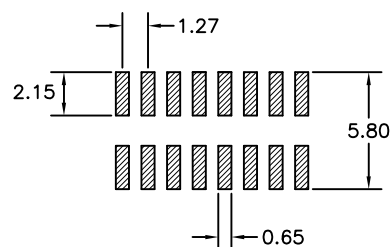
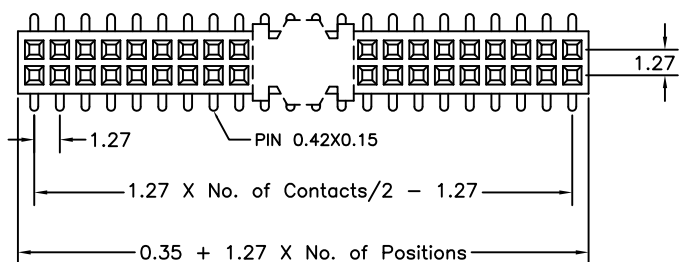
APPLICATION AND FEATURES

1. Mating with 1.27mm pitch and 0.4mm square pin header.
2. RoHS compliant.

SPECIFICATIONS

Current Rating:	1 Amp
Insulator resistance:	1000 Megohms min.
Contact resistance:	20 m ohm Max.
Dielectric withstanding:	300V AC
Operating Temperature:	-40°C to +105°C
Max Processing Temp:	230°C for 30 seconds and 260°C for 5 seconds
Contact Material:	Phosphor bronze
Insulator Material:	LCP, UL 94V-0

RECOMMENDED P.C.B LAYOUT



Order Information 0154D Series

Example: 0154D-40-S2-02-0-PT-G

Series No.

0154D

Number of Contacts

06 to 100 Contacts

Connector Type

Base Height

4.4mm

S2

Contact Plating

Tin Plated

01

Gold Plated

Flash

02

10 μ"

10

30 μ"

30

NULL : Tube
P : Cap + Tube
PT: Cap + T&R

Locating Peg

W/O Locating peg

0