

1.27mm × 1.27mm (0.05" × 0.05") SMD Female Header (Dual Row)

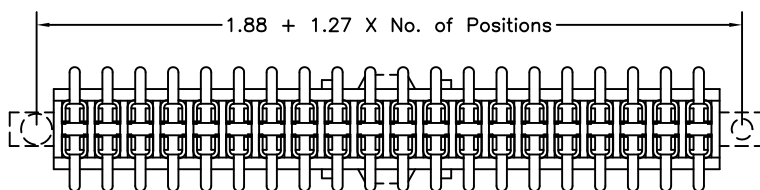
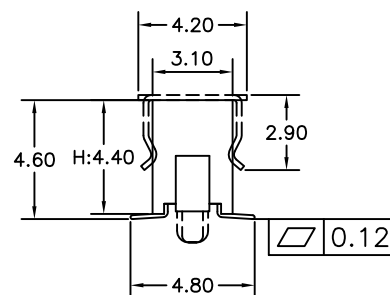
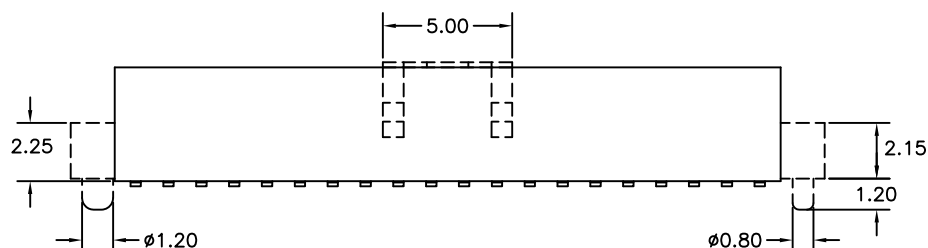
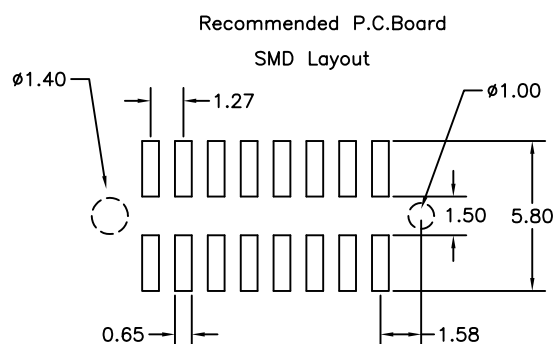
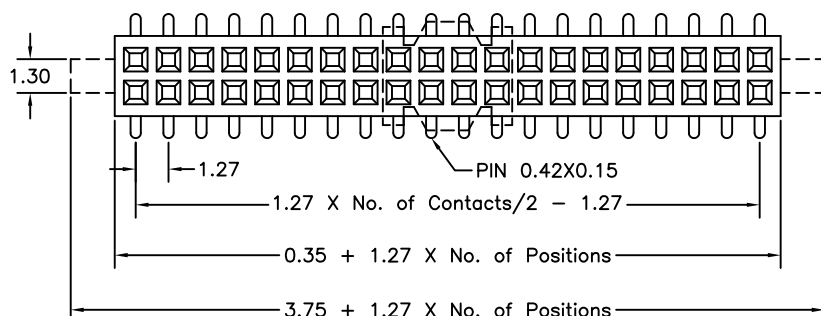
0156 Series

APPLICATION AND FEATURES

- Mates with P.C.Board connectors such as 0055D, 0086D, 0081D, 0083D, 0095, 0153, 0157 & 0158 series.
- RoHS compliant.

SPECIFICATIONS

Current Rating:	1 Amp
Insulator resistance:	1000 Megohms min.
Contacts resistance:	20 m ohms max.
Dielectric withstanding:	300V AC
Operating Temperature:	-40°C to +105°C
Max Processing Temp:	230°C for 30 seconds and 260°C for 5 seconds
Contact Material:	Phosphor bronze
Insulator Material:	High Temperature Thermoplastic, UL 94V-0



Tolerance: ± 0.30 mm

Order Information 0156 Series

Example: 0156 - 20 - S2 - 02 - 1 - PT - G

Series No. 0156	Number of Contacts 04 to 100 Contacts	Connector Type Height: "H" 4.4mm Base S2	Contact Plating Tin Plated 01 Gold Plated Flash 02 10 μ " 10 30 μ " 30	Locating Peg W/O Locating peg 0 W Locating peg 1
				Null: Tube P: Cap+Tube PT: Cap+T&R