

2.0mm (0.079") SMD Shrouded Header

1307M Series

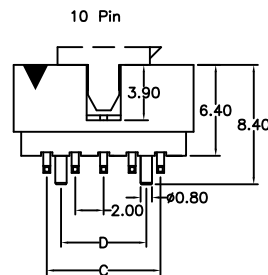
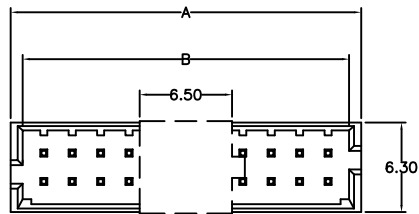
APPLICATION AND FEATURES

1. Mate with 2.0mm pitch P.C.Board Female Connector and shunt connector.
2. RoHS compliant.

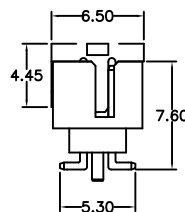
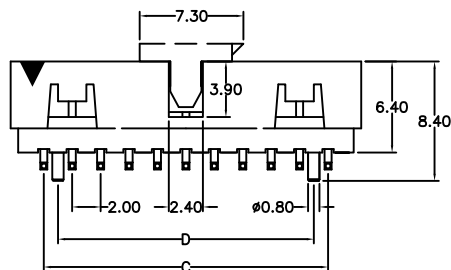
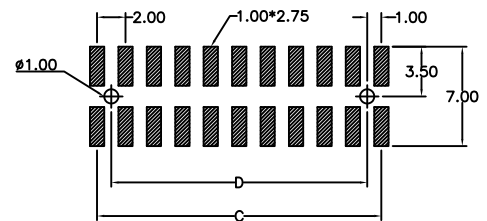
SPECIFICATIONS

Current Rating: 1 Amps
 Insulator Resistance: 1000 Megohms Min.
 Dielectric Withstanding: AC 800 V for 1 minute.
 Operating Temperature: -55°C to +105°C
 Max. Processing Temp.: 230°C for 30 seconds and 260°C for 5 seconds

Contact Material: Copper Alloy
 Insulator Material: Nylon 6T, UL 94V-0, Black



RECOMMEND P.C.B. SMD LAYOUT



No. of Contacts	DIMENSION			
	A	B	C	D
10	12.65	10.85	8.00	6.00
14	16.65	14.85	12.00	10.00
16	18.65	16.85	14.00	12.00
24	26.65	24.85	22.00	20.00
26	28.65	26.85	24.00	22.00
30	32.65	30.85	28.00	26.00

Tolerance: ±0.30mm

Order Information 1307M Series

Example: 1307M-30-02-1-PT

