

2.0mm (0.079") SMT Female Header

Bottom Entry

1416NB Series

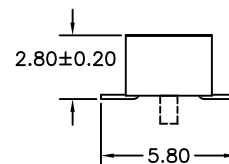
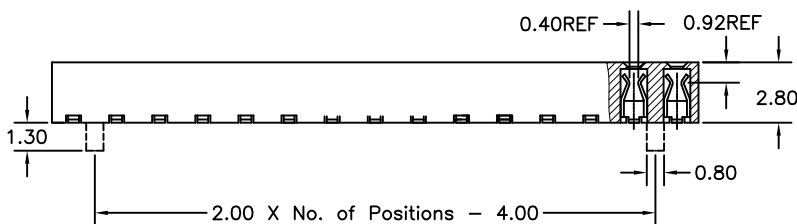
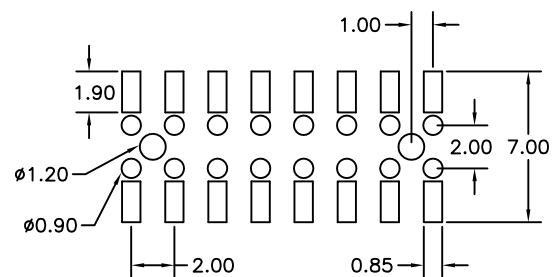
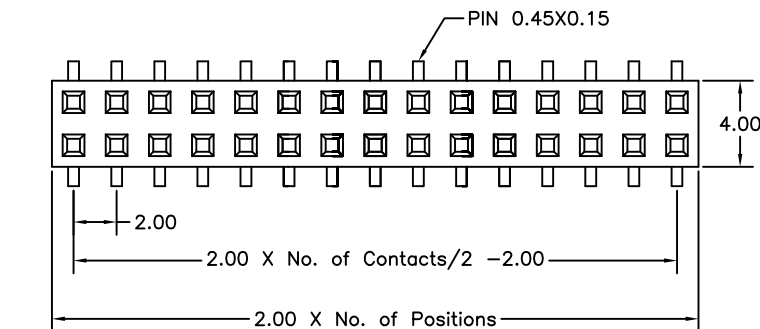
APPLICATION AND FEATURES

1. Low Profile: 2.8mm height.
2. High quality dual beam phosphor bronze contacts.
3. Designed for board to board small spacing interconnection.
4. Mating with 2.0mm pitch □ 0.5mm Pin Headers. such as 1202, 1204D & 1205 series.
5. RoHS compliant.

SPECIFICATIONS

Current Rating:	2 Amp
Insulator resistance:	1000 Megohms min.
Contact resistance:	20 m ohm Max.
Dielectric withstanding:	500V AC/DC
Operating Temperature:	-40°C to +105°C
Max Processing Temp:	230°C for 30 seconds (260°C for 5 seconds)
Contact Material:	Phosphor bronze
Insulator Material:	High Temperature Thermoplastic, UL 94V-0

RECOMMENDED P.C.B LAYOUT



Order Information 1416NB Series

Example: 1416NB - 20 - 02 - 1 - G

Series No.	Number of Contacts	Contact Plating	Locating Peg
1416NB	06 to 70 Contacts	Tin Plated 01	W/O Locating peg 0
		Gold Plated	W Locating peg 1
		Flash 02	
		10 μ" 10	
		30 μ" 30	