

2.54mm (0.1") Pin Header

(Dual Body, Straight)

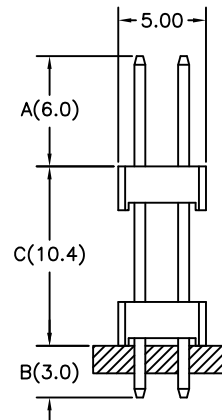
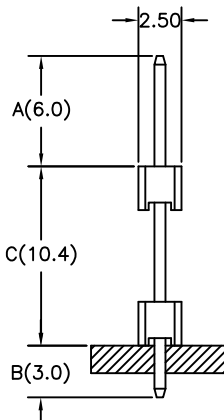
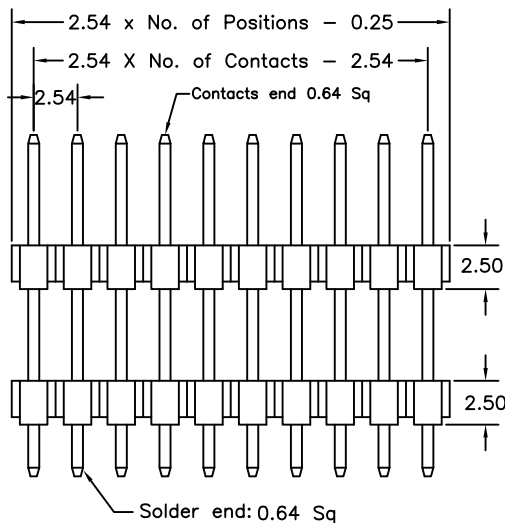
2204X Series

APPLICATION AND FEATURES

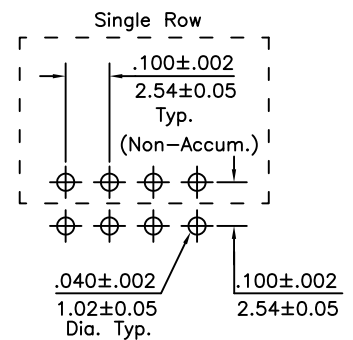
1. Notches for easy breakable.
2. Maintains the dimension between two P.C.Boards.
3. Variable pin length.
4. Standoffs facilitate post soldering clean.
5. RoHS compliant.

SPECIFICATIONS

Current Rating:	3 Amps
Insulator Resistance:	5000 Megohms min.
Contact Resistance:	20 m ohm Max.
Dielectric Withstanding:	AC 500 V
Operating Temperature:	-40°C to +105°C
Max Processing Temp:	245±5°C for 3-5 seconds
Contact Material:	Brass
Insulator Material:	Nylon 6T, UL 94V-0, Black



Recommended P.C.Board
Hole Layout



Tolerance: ±0.30mm

Order Information 2204 Series

Example: 2204D-34-S-02-A/C/B-HT

Series No.	Number of Contacts	Connector Type	Contact Plating		Pin Length mm		
					A	C	B
2204D	02 to 80 Contacts	Straight S	Tin Plated	01	6.0	10.4	3.0
2204S (Single Row)	02 to 40 Contacts		Gold Plated				
			Flash	02			
2204D (Dual Row)	04 to 80 Contacts		10 μ"	10			
			30 μ"	30			