

2.54mm (0.1") Female Header

Dual Beam Folded Type

(Dual Row, Straight)

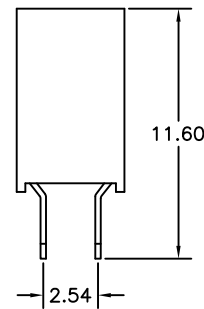
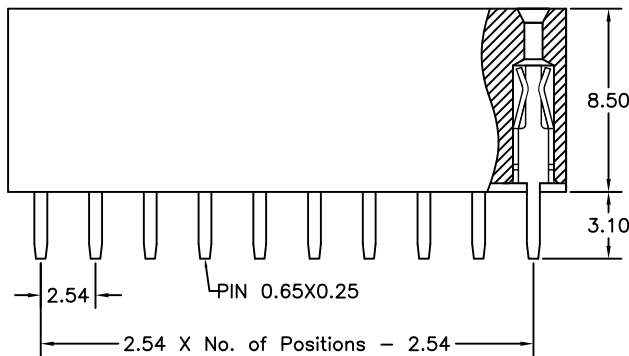
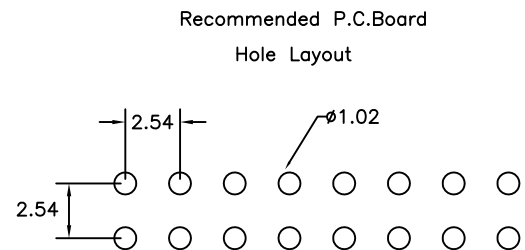
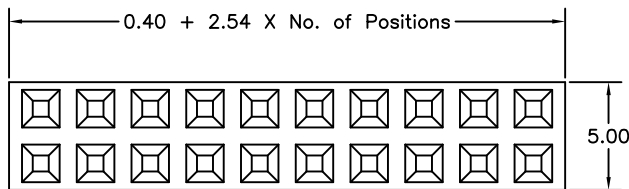
2225 Series

APPLICATION AND FEATURES

1. For profile application 8.5mm high.
2. Accept 0.64mm square pin with closed entry.
3. Mate with pin header such as 2202, 2205, 2100 & 2204D series.
4. RoHS compliant.

SPECIFICATIONS

Current Rating: 3 Amps
Insulator Resistance: 1000 Megohms min.
Contact Resistance: 20 m ohm Max.
Dielectric Withstanding: AC 1000 V
Operating Temperature: -40°C to +105°C
Contact Material: Copper Alloy
Insulator Material: Nylon 6T, UL 94V-0



Tolerance: $\pm 0.30\text{mm}$

Order Information 2225 Series

Example: 2225 - 34 - S - 02 - H

Series No.	Number of Contacts	Connector Type	Contact Plating
2225	08 to 80 Contacts	Straight S	Tin Plated 01
			Gold Plated
			Flash 02
			10 μ " 10
			30 μ " 30