

2.54mm (0.1") Female Header

(Dual Row)

2227 Series

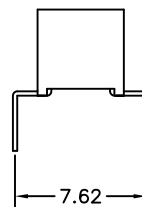
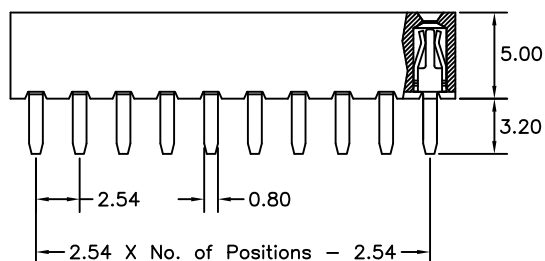
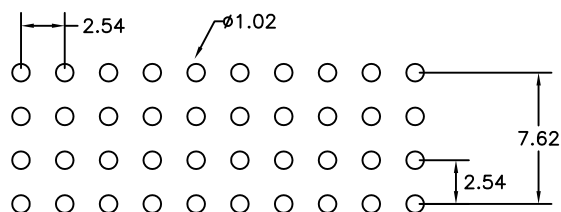
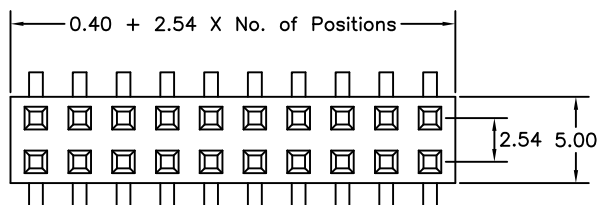
APPLICATION AND FEATURES

1. Bottom entry low profile 5mm height.
2. Designed for parallel and vertical board stacking.
3. Dual-beam folded contact.
4. Standoffs facilitate post soldering clean.
5. Mate with 2.54mm grid Dual Row male header such as 2202, 2205, 2100 & 2204D series.
6. RoHS compliant.

SPECIFICATIONS

Current Rating: 3 Amps
 Insulator Resistance: 1000 Megohms min.
 Contact Resistance: 30 m ohm Max.
 Dielectric Withstanding: AC 1000 V
 Operating Temperature: -55°C to +105°C
 Contact Material: Copper Alloy
 Insulator Material: Nylon 6T,UL 94V-0

Recommended P.C.Board
Hole Layout



Tolerance: ±0.30mm

Order Information 2227 Series

Example: 2227 - 7 - 34 - 02

Series No.	Pitch Type	Number of Contacts	Contact Plating
2227	7.62mm	06 to 80 Contacts	Tin Plated 01
			Gold Plated
			Flash 02
			10 μ" 10
			30 μ" 30