

2.54mm (0.1") SMT Pin Header

(Double Row)

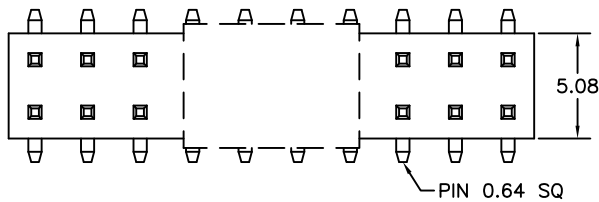
2821 Series

APPLICATION AND FEATURES

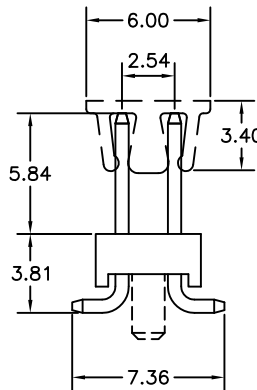
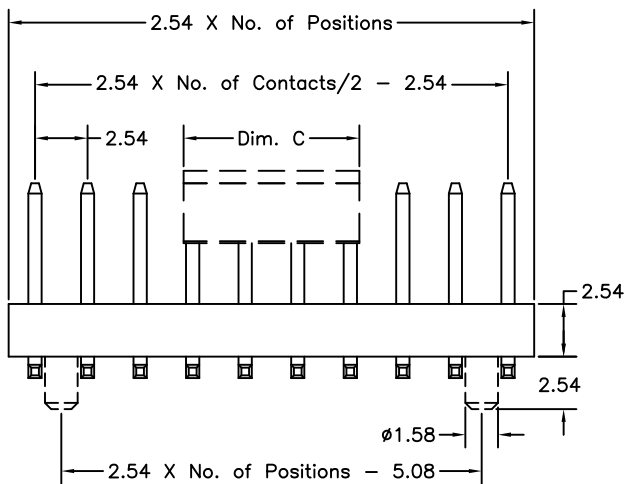
1. Variable pin length.
2. Mate with Mini Jumper and P.C.Board socket connectors such as 2221, 2222, 2223, 2225, 2226 & 2206 series.
3. RoHS compliant.

SPECIFICATIONS

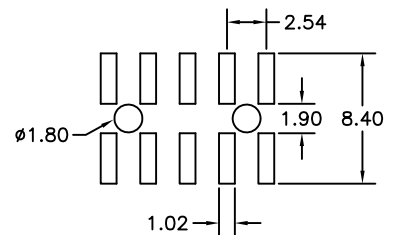
Current Rating:	3 Amps
Insulator Resistance:	1000 Megohms Min.
Contact Resistance:	20 m ohm Max.
Dielectric Withstanding:	600V AC/DC
Operating Temperature:	-40°C to +105°C
Max Processing Temp:	230°C for 30 seconds and 260°C for 5 seconds
Contact Material:	Brass
Insulator Material:	Nylon-6T, UL 94V-0



Dim. C	NOTE
6.00mm	06~16pins
8.50mm	18~80pins



Recommended P.C.Board
SMT Layout



Order Information 2821 Series

Example: 2821-20-02-5.84-1-PT-G

<p>Series No.</p> <p>2821</p>	<p>Number of Contacts</p> <p>06 to 80 Contacts</p>	<p>Contact Plating</p> <p>Tin Plated 01</p> <p>Gold Plated</p> <p>Flash 02</p> <p>10 μ" 10</p> <p>30 μ" 30</p>	<p>Pin Length mm</p> <p>A</p> <p>5.84</p>	<p>Null : Tube</p> <p>P : Cap + Tube</p> <p>PT: Cap + T&R</p> <p>0: w/o Locating Peg</p> <p>1: with Locating Peg</p>
--------------------------------------	---	---	--	--