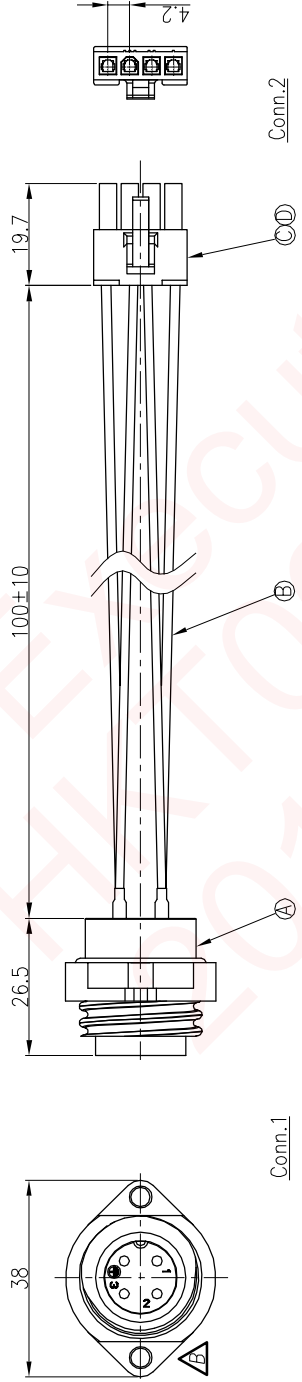


F E D C B A

1 2 3 4 5 6 7 8

REV.	ECN NO OR DESCRIPTION	REVISED	DATE
A	PDR NO.:C120425-4A	Lx-Wu	2014.05.30
B	ECN NO.:S150637-R	Vicky	2015.06.16



Conn.2

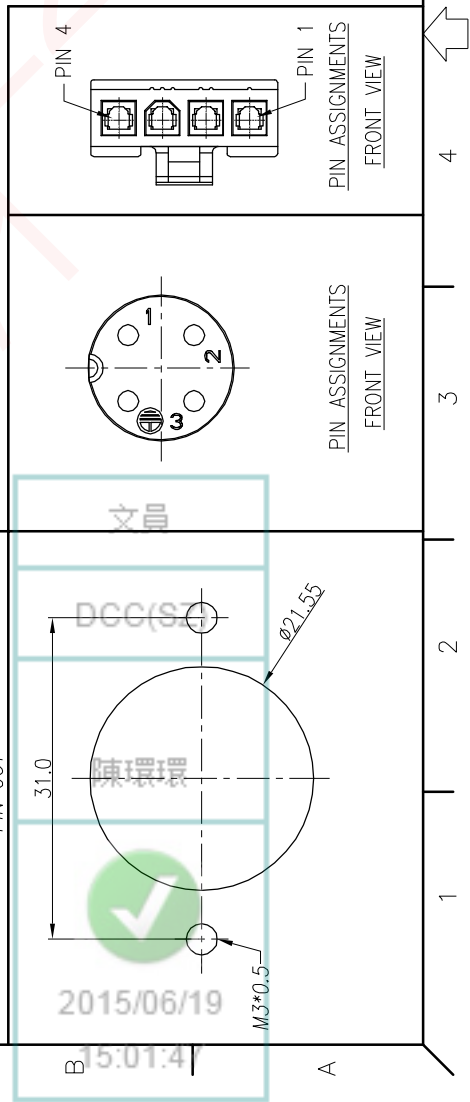
CONN. WATERPROOF RATE: IP67

NOTES:

1. WATERPROOF RATE: IP67
IP67: IMMersed IN 1M WATER FOR 30 MINUTES
2. ELECTRICAL CHARACTERISTICS
TEMPERATURE RANGE: -40°C TO +100°C
CURRENT RATING: 12A
DIELECTRIC WITHSTANDING VOLTAGE: 1000V AC FOR ONE MINUTE
SPECIFICATIONS:SEE "POWER CONN SERIES SPECIFICATIONS".
3. SPECIFICATIONS:SEE "POWER CONN SERIES SPECIFICATIONS".
4. TO CONFORM TO SINGATRON HAZARDOUS SUBSTANCE FREE SPEC.
5. TO CONFORM TO RoHS REQUIREMENT AND REACH REGULATION: **G.P. PASS**

TABLE:

DRAIN	BLACK	4
3	ORANGE	3
2	BROWN	2
1	RED	1
CONN.1	WIRE COLOR	CONN.2
PIN OUT		



D	HOUSING	1	P/N:TY4281HNO-1*04	WHITE
C	TERMINAL	4	P/N:TY4281IPH-A-DH	TIN-PLATED
B	WIRE	4	UL1007 16AWG	SEE TABLE
A	WATERPROOF CONN	1	P/N:2AC3003-W04500H	N/A
NO	DESCRIPTION	QTY	MATERIAL	PLATING & COLOR
UNLESS OTHERWISE SPECIFIED TOLERANCES				
SINGATRON ENTERPRISE CO., LTD. 信亨企業股份有限公司				
TITLE POWER CONNECTOR(SOLDER/LOCK TYPE)				
DWN Vicky				
CHKD Harlen				
APVD Steve				
PART NO.:2AC3003-W04501H				
SCALE: 1:1 UNIT: mm				
SIZE: A3 SHEET: 1 OF 1 REV: B				
CUSTOMER COPY				

F E D C B A