

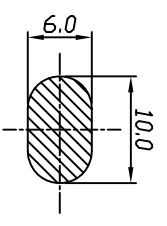
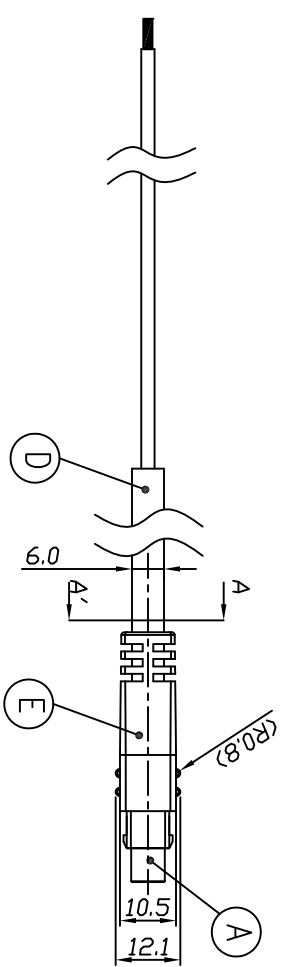
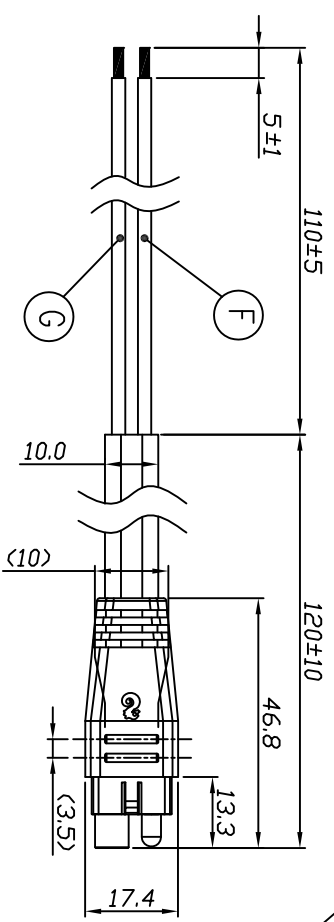
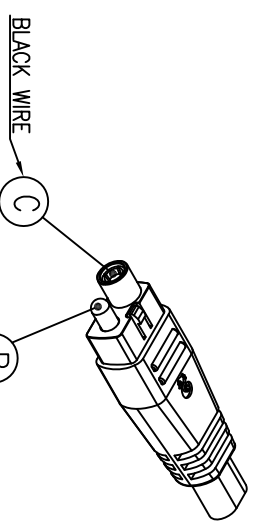


REV. ECN NO OR DESCRIPTION	REVISED	DATE
A PRODUCT RELEASE	JASON	2011.03.01

**SPECIFICATIONS:**

- ELECTRICAL CHARACTERISTICS:**
  - 1-1. RATING: 36V DC 25A
  - 1-2. CONTACT RESISTANCE: 0.5mΩ MAX.(INITIAL PRE PIN)
  - 1-3. CONTACT RESISTANCE(WITH WIRE): 10mΩ MAX.(INITIAL)
- MECHANICAL CHARACTERISTICS:**
  - 2-1. INSERTION FORCE : 3.0 ±2 KGF MAX.(INITIAL)
  - 2-2. WITHDRAWAL FORCE :0.5 KGF Min.(INITIAL)
- LIFE TEST:** 3,000 CYCLES MIN.
- OTHER GENERAL SPEC. TO REFER "2BA1014-000210 SPEC."**
- TO CONFORM TO SINGATRON HAZARDOUS SUBSTANCE FREE SPEC.**
- GREEN PRODUCT IDENTIFICATION MARK ON JACK: **
- GREEN PRODUCT IDENTIFICATION LABEL ON PACKAGING: **
- PACKAGING: BAG**
- WATERPROOF RATE: IPX5**
- CABLE JACKET MATERIAL:BLACK PVC**



SECTION A-A'  
SCALE 2:1

NO	DESCRIPTION	QTY	MATERIAL	PLATING & COLOR
A	HOUSING	1	THERMOPLASTIC 94-V0	BLACK
B	MALE PIN	1	BRASS	3u" GOLD PLATED OVER NICKEL PLATING
C	FEMALE PIN	1	BRASS	3u" GOLD PLATED OVER NICKEL PLATING
D	OVER MOLD	1	PVC	BLACK
E	INSERT MOLD	1	PVC	NATURAL
F	WIRE	1	UL1015 #14 AWG	BLACK
G	WIRE	1	UL1015 #14 AWG	RED

UNLESS OTHERWISE SPECIFIED TOLERANCES

 Singatron Enterprise Co., Ltd.  
信音企業股份有限公司

TITLE **BATTERY CONNECTOR + WIRE**

DWN JASON 2011.03.01 PART NO.2BA1014-000210

CHKD ANGELA 2011.03.01 SCALE 1:1 UNIT: mm 

APVD ANGELA 2011.03.01 SIZE: A3 SHEET:1 OF 1 REV: A

**CUSTOMER COPY**

