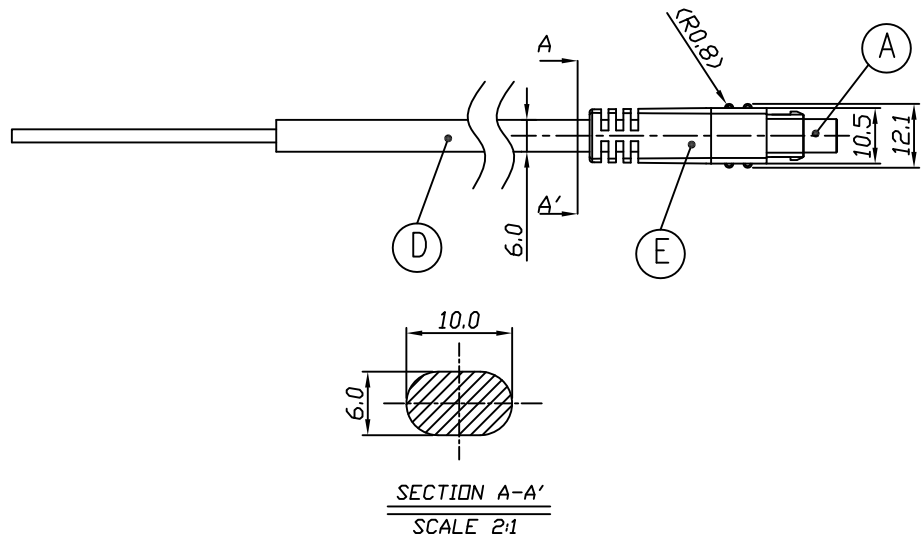
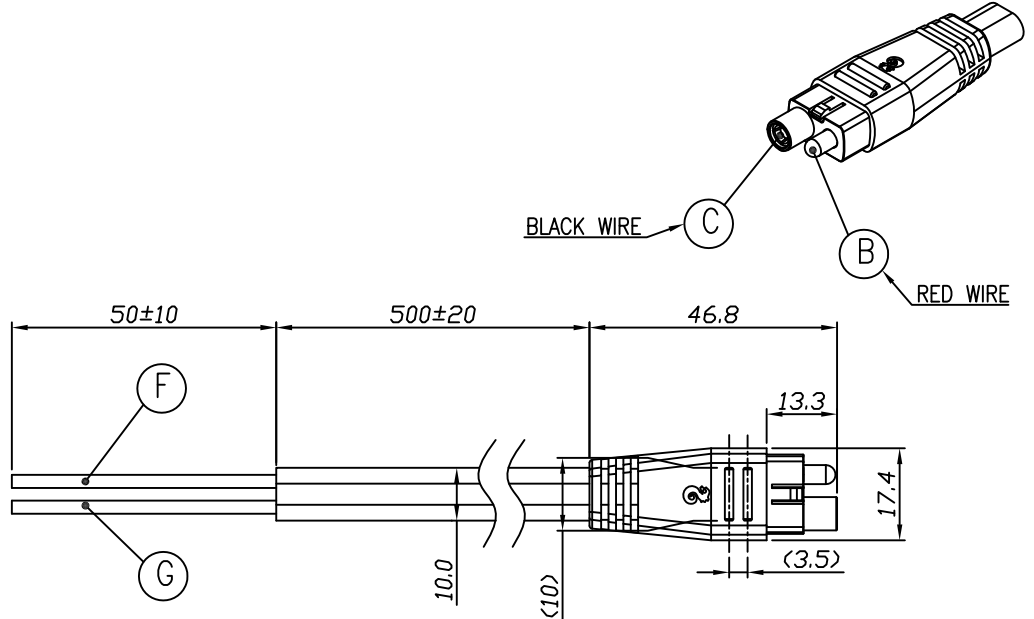


REV.	ECN NO OR DESCRIPTION	REVISED	DATE
A	PRODUCT RELEASE	Duke	2014.12.30



SPECIFICATIONS:

1. ELECTRICAL CHARACTERISTICS:
 - 1-1. RATING: 36V DC 25A
 - 1-2. CONTACT RESISTANCE: 0.5mΩ MAX.(INITIAL PRE PIN)
 - 1-3. CONTACT RESISTANCE(WITH WIRE): 10mΩ MAX.(INITIAL)
2. MECHANICAL CHARACTERISTICS:
 - 2-1. INSERTION FORCE : 3.0 ±2 KGF Max.(INITIAL)
 - 2-2. WITHDRAWAL FORCE :0.5 KGF Min.(INITIAL)
3. LIFE TEST: 3,000 CYCLES MIN.
4. OTHER GENERAL SPEC. TO REFER "2BA1014-W01210H SPEC".
5. TO CONFORM TO SINGATRON HAZARDOUS SUBSTANCE FREE SPEC.
6. GREEN PRODUCT IDENTIFICATION MARK ON JACK:
7. GREEN PRODUCT IDENTIFICATION LABEL ON PACKAGING:
8. PACKAGING: BAG
9. WATERPROOF RATE: IPX5
10. CABLE JACKET MATERIAL:BLACK PVC

G	WIRE	1	UL1015 #14 AWG	BLACK
F	WIRE	1	UL1015 #14 AWG	RED
E	INSERT MOLD	1	PVC	NATURAL
D	OVER MOLD	1	PVC	BLACK
C	FEMALE PIN	1	BRASS	3u" GOLD PLATED OVER NICKEL PLATING
B	MALE PIN	1	BRASS	3u" GOLD PLATED OVER NICKEL PLATING
A	HOUSING	1	THERMOPLASTIC 94-V0	BLACK
NO	DESCRIPTION	QTY	MATERIAL	PLATING & COLOR

UNLESS OTHERWISE SPECIFIED TOLERANCES		Singatron Enterprise Co., Ltd. 信音企業股份有限公司		
DECIMALS:	ANGLES:	TITLE	BATTERY CONNECTOR + WIRE	
X :±0.5	X :±2°	DWN Duke	PART NO.2BA1014-W01210H	
X.X :±0.3	X.X :±1°	CHKD	SCALE 1:1	UNIT: mm
X.XX :±0.2		APVD ACHENG	SIZE: A3	SHEET:1 OF 1
REV: A				
CUSTOMER COPY				