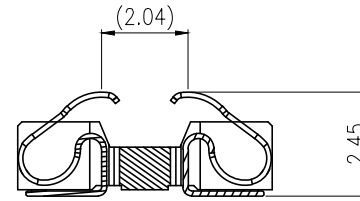
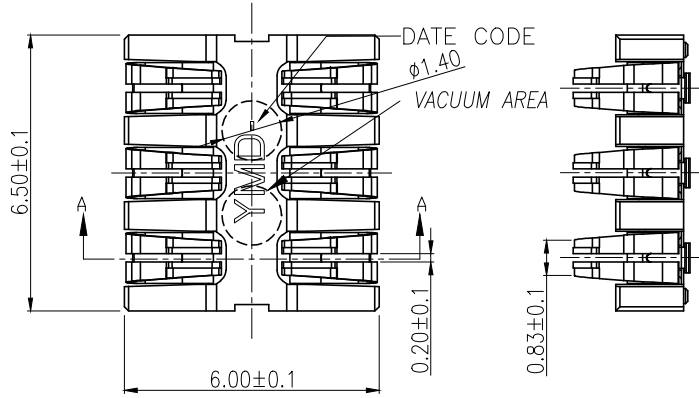
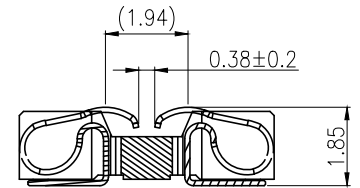


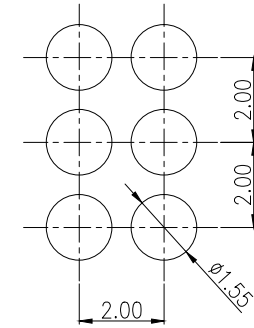
REV.	ECN NO OR DESCRIPTION	REVISED	DATE
A	PDR NO.S170209-3A	MARS	2020.01.07
B	ECN NO.S202004-R07 ECN NO.S202005-E15	MARS	2020.07.17



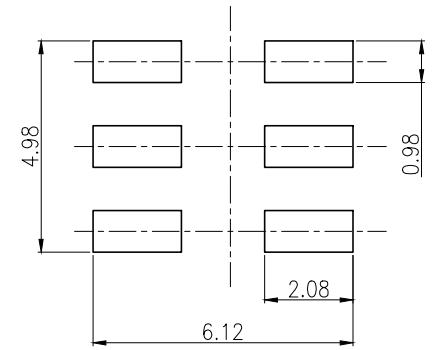
下壓最小行程



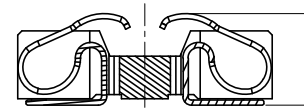
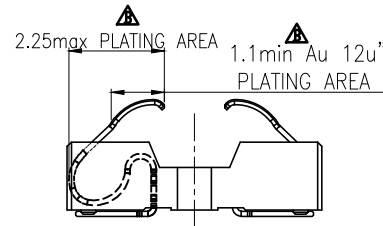
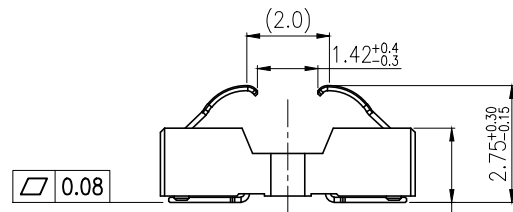
下壓最大行程



REFERENCE CONTACT SURFACE

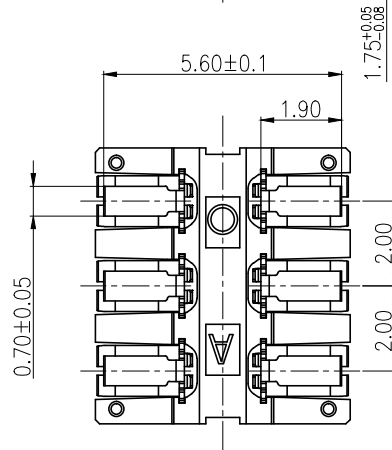


RECOMMENDED PCB LAYOUT(TOP VIEW)
(TOLERANCE:±0.05)



SECTION A-A

Ref. Note2-2



SPECIFICATIONS:

- ELECTRICAL CHARACTERISTICS:
 - CURRENT RATING: 0.5A MAX.
 - VOLTAGE RATING: 20V MAX.
 - CONTACT RESISTANCE: 50mΩ MAX.(INITIAL).
100mΩ MAX.(AFTER LIFE TEST).
 - INSULATION RESISTANCE: 100MΩ MIN.
- MECHANICAL CHARACTERISTICS:
 - DURABILITY: 1000 CYCLES.
 - CONTACT FORCE: 0.40N MIN. AT THIS DIMENSION.
 - OPERATING TEMPERATURE: -40°C ~ +85°C.
- PACKAGING : TAPE & REEL.
- TO CONFORM TO SINGATRON HAZARDOUS SUBSTANCE FREE SPEC.
- FOR REFLOW SOLDERING LEAD-FREE PROCESS.

B	HOUSING	1	LCP	BLACK
A	CONTACT	6	COPPER ALLOY T:0.12mm	Au 12u" MIN ON CONTACT AREA, Au 1.2u" MIN SOLDER AREA, All OVER Ni 50u"~120u".
NO	DESCRIPTION	QTY	MATERIAL	PLATING & COLOR
UNLESS OTHERWISE SPECIFIED TOLERANCES		Singatron Enterprise Co., Ltd. 信音企業股份有限公司		
DECIMALS: ANGLES:		TITLE		
X :±0.5 X :±2°		BATTERY CONNETOR		
X.X :±0.3 X.X :±1°		DWN Mars PART NO.2BA3070-006111F		
X.XX :±0.2		CHKD CERRY SCALE 8:1 UNIT: mm		
		APVD WILLIAM SIZE: A3 SHEET:1 OF 1 REV: B		
CUSTOMER COPY				