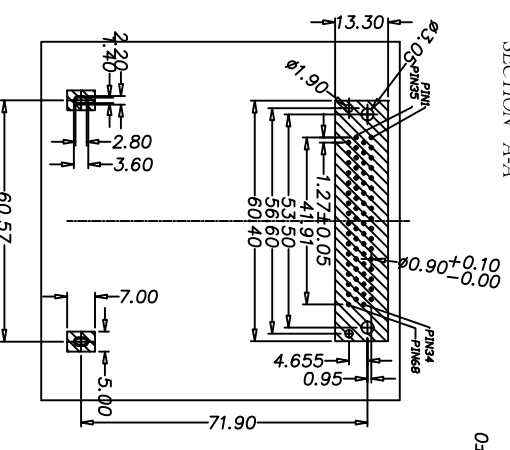
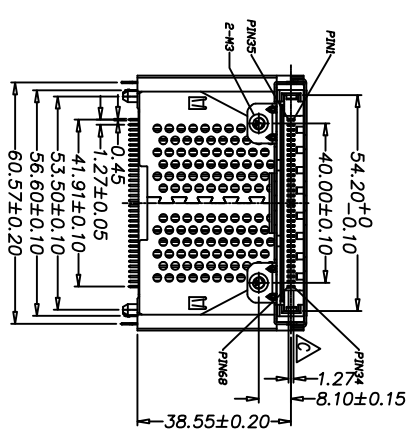
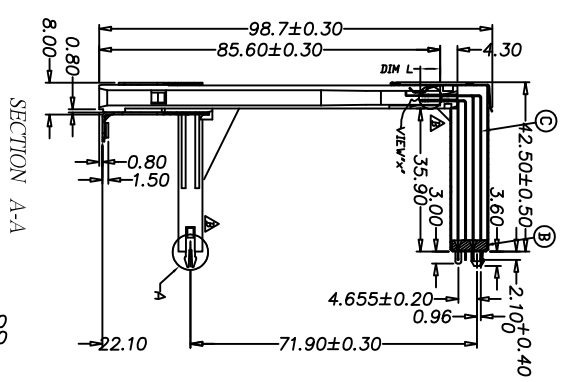
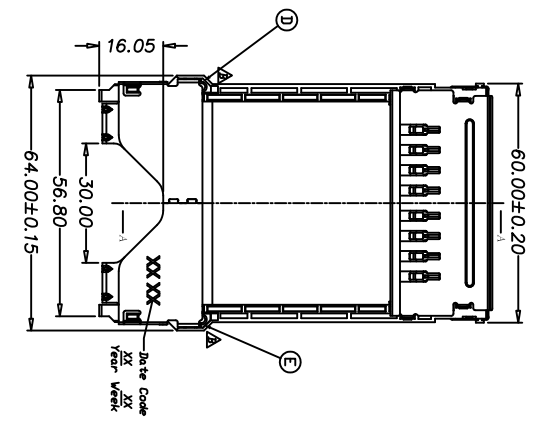
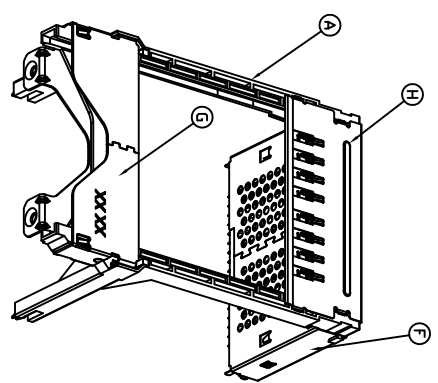
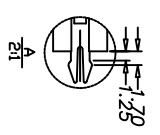
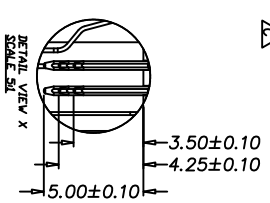
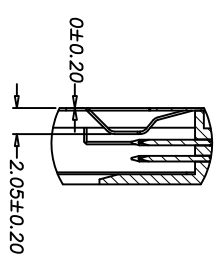


REV/ECN NO OR DESCRIPTION	REVISED	DATE
A PDR RELEASE	IVY-C	2011.03.23
B ECN NO:L1100040	IVY-C	2011.04.26
C ECN NO:L120147	IVY-C	2012.11.12

- SPECIFICATIONS:
1. OTHER GENERAL SPEC. TO REFER "2CA1506 SERIES SPEC".
 2. TO CONFORM TO SINGATRON HAZARDOUS SUBSTANCE FREE SPEC.
 3. GREEN PRODUCT IDENTIFICATION LABEL ON PACKAGING: **G.P. PASS**
 4. PACKAGE : SEE " 2CA1523 SERIES " PACKAGE.
 5. SOLDER HEAT RESISTANCE: WAVE SOLDERING 260°C 10SECS.



RECOMMENDED PCB LAYOUT (TOP VIEW)
RECOMMENDED PCB THK.=1.60±0.10
TOLERANCE: ±0.05



PIN TYPE	DIM L±0.10mm	PIN NUMBER
DETECT	3.50	36, 67
GENERAL	4.25	ALL OTHER PINS
POWER/GND	5.00	1, 17, 34, 35, 51, 68

PART NO. 2CA1523-000111H
SUFFIX: HALOGEN
PACKAGE 1: TRAY
HOUSING COLOR 1: BLACK
CONTACT PLATING 1: GOLD FLASH ON CONTACT AREA, TIN PLATING ON SOLDER AREA

NO	DESCRIPTION	QTY	MATERIAL	PLATING & COLOR
1	INK			BLACK
H	CARD BUS SHELL	1	STAINLESS STEEL	N/A
G	TOP SHELL	1	SPCC	NICKEL
F	EMI SHELL	1	STAINLESS STEEL	TIN
E	RIGHT HOOK PIN	1	COPPER ALLOY	GOLD FLASH / TIN
D	LEFT HOOK PIN	1	COPPER ALLOY	GOLD FLASH / TIN
C	CONTACT	68	COPPER ALLOY	GOLD FLASH / TIN
B	LOCATOR	1	PBT+GF30%(U94V-0)	BLACK
A	BASE	1	PBT+GF30%(U94V-0)	BLACK
NO	DESCRIPTION	QTY	MATERIAL	PLATING & COLOR

Singaton Enterprise Co., Ltd.
信音企業股份有限公司

DECIMALS:	ANGLES:	TITLE	DATE
X : ±0.5	X : ±2°	168P PONCA CARDBUS, 35H, TOP SHELL GROUNDING	IVY-C 2012.11.12
X.X : ±0.3	X.X : ±1°	DWN	IVY-C 2012.11.12
X.XX : ±0.2		CHKD	IVY-C 2012.11.12
		APVD	IVY-C 2012.11.12

CUSTOMER COPY