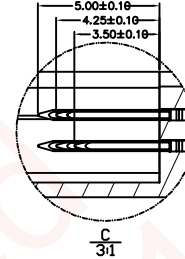
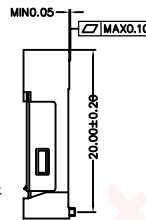
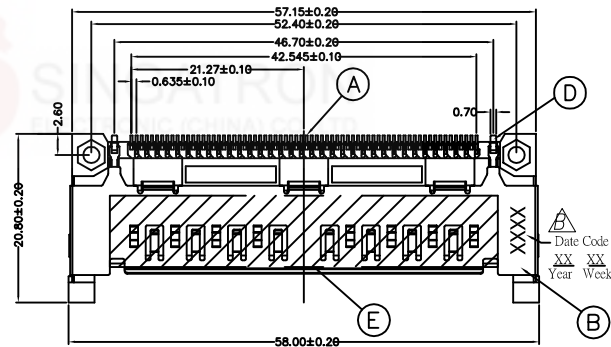
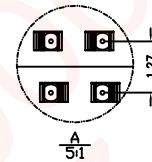
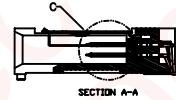
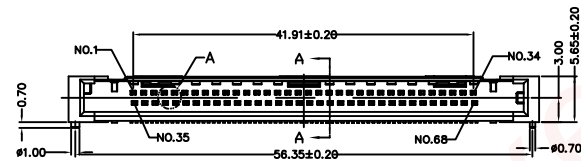


REV.	ECN NO OR DESCRIPTION	REVISED	DATE
A	PDR RELEASE	IVY-C	2012.10.05
B	ECN NO: L150091	IVY-C	2015.07.15



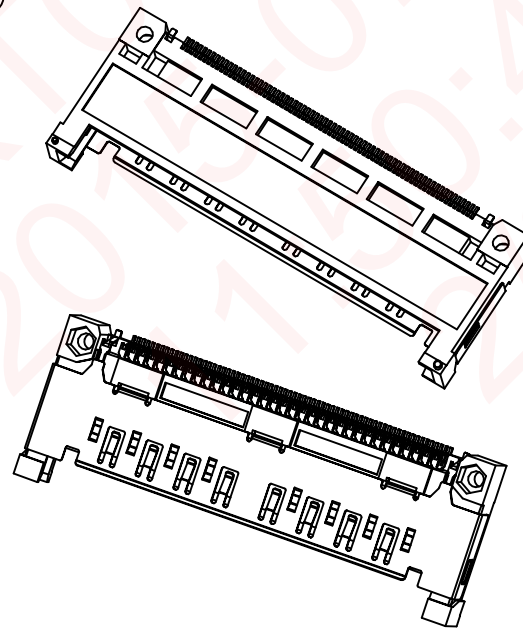
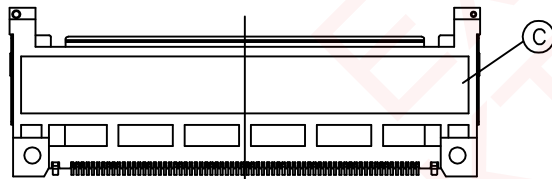
SPECIFICATIONS:

- OTHER GENERAL SPEC. TO REFER "2CA1524 SERIES SPEC".
- TO CONFORM TO SINGATRON HAZARDOUS SUBSTANCE FREE SPEC.
- GREEN PRODUCT IDENTIFICATION LABEL ON PACKAGING: **G.P. PASS**
- PACKAGE : SEE " 2CA1524 SERIES " PACKAGE.
- FOR REFLOW SOLDERING LEAD-FREE PROCESS.

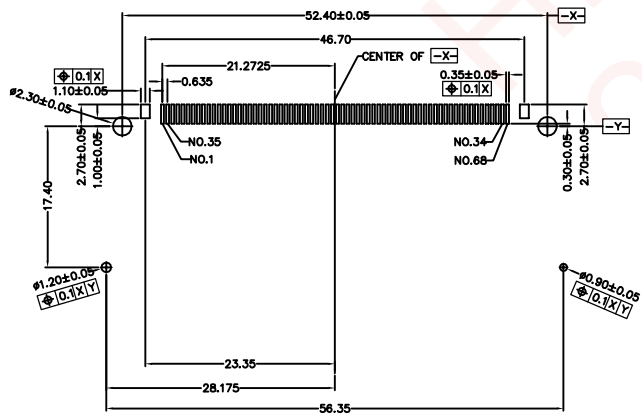


PART NO.
2CA1524-000111H

- SUFFIX: HALOGEN
- PACKAGE
- 1: TAPE AND REEL
- HOUSING COLOR
- 1: BLACK
- CONTACT PLATING
- 1: GOLD FLASH ON CONTACT AREA,
TIN PLATING ON SOLDER AREA
NICKEL UNDERPLATED OVERALL.



PIN TYPE	LENGTH(±0.10mm)	PIN NUMBER
DETECT	3.50	36, 67
GENERAL	4.25	ALL OTHER PINS
POWER/GND	5.00	1, 17, 34, 35, 51, 68



RECOMMENDED PCB LAYOUT (TOP VIEW)
TOLERANCE: ±0.05

F	INK		BLACK
E	MYLAR	1	KAPTON FILM YELLOW
D	GROUND PIN	2	COPPER ALLOY GOLD FLASH / TIN
C	BASE	1	LCP+GF30%(UL94V-0) BLACK
B	CARD BUS SHELL	1	COPPER ALLOY GOLD FLASH ON CONTACT AREA. NICKEL UNDERPLATED OVERALL.
A	CONTACT	68	COPPER ALLOY GOLD FLASH / TIN
NO	DESCRIPTION	QTY	MATERIAL PLATING & COLOR

UNLESS OTHERWISE SPECIFIED TOLERANCES

Singatron Enterprise Co., Ltd.
信音企業股份有限公司

DECIMALS:	ANGLES:	TITLE	68P PCMCIA CARDBUS CONNECTOR, SMT TYPE
X : ±0.5	X : ±2°	DWN	IVY-C 2015.07.15 PART NO. 2CA1524-000111H
XX : ±0.3	XX : ±1°	CHKD	ANGELA 2015.07.15 SCALE: N/A UNIT: mm
XXX : ±0.2		APVD	ANGELA 2015.07.15 SIZE: A3 SHEET: 1 OF 1 REV: B

CUSTOMER COPY