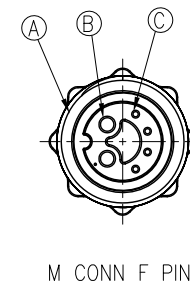
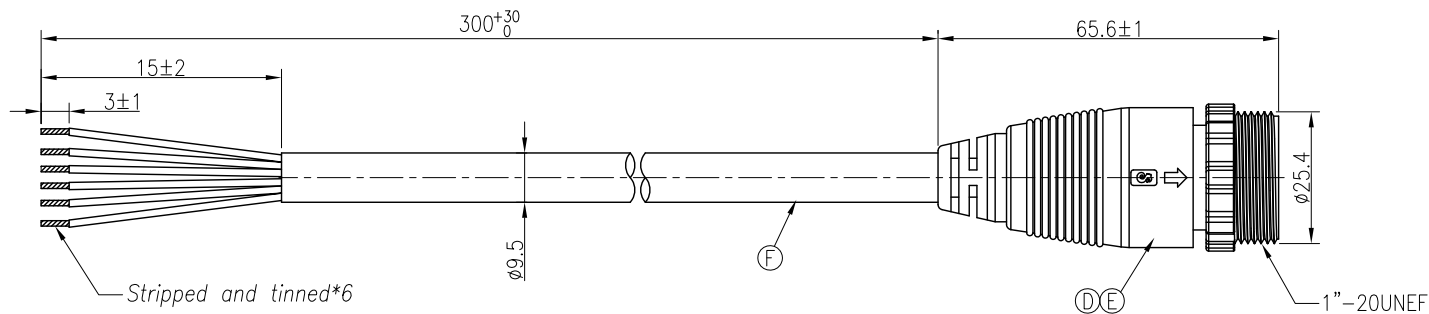
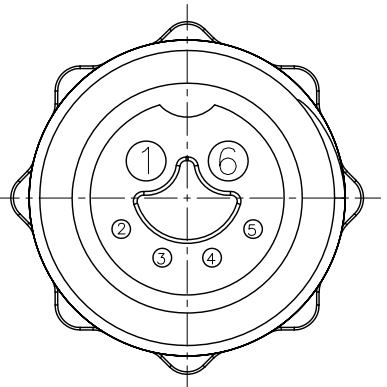


REV.	ECN NO OR DESCRIPTION	REVISED	DATE
A	PDR NO.:C120314-7A	Shawn	2014.03.21



BLACK	16AWG	6	
ORANGE	22AWG	5	TWIST
BLUE	22AWG	4	
GREEN	22AWG	3	TWIST
BROWN	22AWG	2	
RED	16AWG	1	
WIRE COLOR		CONN.	

PIN OUT
CONN.



Pin Assignments
Front View

NOTES:

1. WATERPROOF RATE: IP66/IP67
2. ELECTRICAL CHARACTERISTICS
TEMPERATURE RANGE: -20°C TO +80°C
CURRENT RATING: 20A+5A
DIELECTRIC WITHSTANDING VOLTAGE: 500V AC FOR ONE MINUTE
3. OTHER GENERAL SPEC. TO REFER "CIRCULAR SERIES SPEC".
4. TO CONFORM TO ROHS REQUIREMENT AND REACH REGULATION
5. GREEN PRODUCT IDENTIFICATION LABEL ON PACKAGING: **G.P. PASS**
6. NON-HUMAN FACTORS CASE SERVICE LIFE IS 5 YEARS
7. TORQUE FORCE: 0.8~1.0N.m

F	CABLE	1	UL2464 22#*2P+AL/MY +16#*2C UV OD=9.5	GRAY(PANTONE 7543U)
E	INNER MOLD	1	TPU	NATURAL
D	OVER MOLD	1	PVC	BLACK
C	FEMALE PIN	4	Phosphor Bronze	6u" GOLD PLATING OVER NICKEL PLATING
B	FEMALE PIN	2	Phosphor Bronze	1~3u" GOLD PLATING OVER NICKEL PLATING
A	BODY	1	NYLON+33%GF	BLACK
NO	DESCRIPTION	QTY	MATERIAL	PLATING & COLOR

UNLESS OTHERWISE SPECIFIED TOLERANCES

Singatron Enterprise Co., Ltd.
信音企業股份有限公司

DECIMALS:	ANGLES:	TITLE	CIRCULAR LARGE SIZE (IP67) MALE CONN. FEMALE (2+4) PIN SCREW TYPE	
X :±0.5	X :±2°	DWN	Shawn	PART NO.2CG3031-W06F01H
X.X :±0.3	X.X :±1°	CHKD	Harlen	SCALE 1:1 UNIT: mm
X.XX :±0.2		APVD	Quan	SIZE: A3 SHEET:1 OF 1 REV: A

CUSTOMER COPY