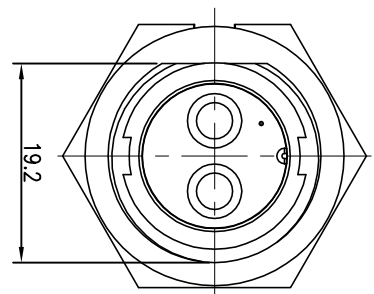
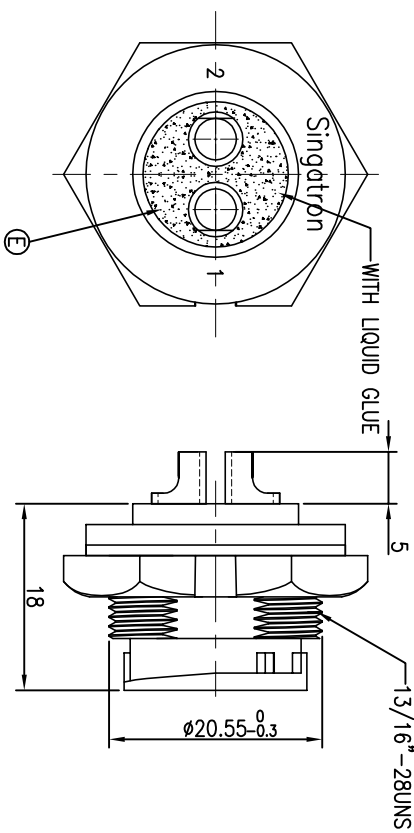
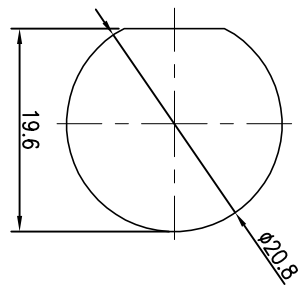
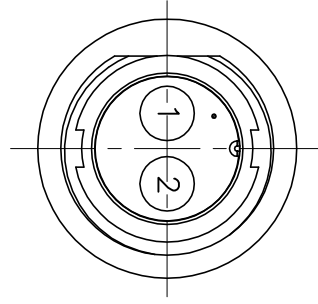


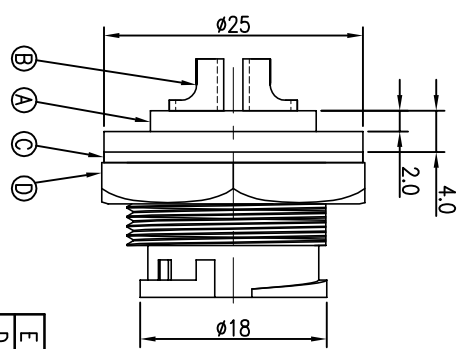
| REV. | ECN NO OR DESCRIPTION | REVISED | DATE |
|------|-----------------------|---------|------------|
| A | PDR NO.:T100503-1A | Shown | 2010.06.28 |
| B | ECN NO.:S120407 | Harfen | 2012.4.2 |
| C | ECN NO.:S121109 | YF | 2014.03.27 |



PIN ASSIGNMENTS
FRONT VIEW



RECOMMENDED PANEL CUT-OUT



- NOTES:
1. WATERPROOF RATE: IP67
IP67: IMMERSED IN 1M WATER FOR 30 MINUTES
 2. CURRENT RATING: 40A
 3. TO CONFORM TO SINGATRON HAZARDOUS SUBSTANCE FREE SPEC.
 4. GREEN PRODUCT IDENTIFICATION LABEL ON PACKAGING: G.F. PASS
 5. FOR PANEL THICKNESS MAX OF 3.5mm

| NO | DESCRIPTION | QTY | MATERIAL | PLATING & COLOR |
|----|-------------|-----|----------|---|
| E | LIQUID GLUE | 1 | N/A | BLACK |
| D | NUT | 1 | NYLON+GF | BLACK |
| C | GASKET | 1 | EPDM | BLACK |
| B | MALE PIN | 2 | BRASS | 6u" GOLD PLATING OVER NICKEL PLATING |
| A | BODY | 1 | NYLON+GF | BLACK |

UNLESS OTHERWISE SPECIFIED TOLERANCES

| DECIMALS: | ANGLES: | TITLE | MIDDLE SIZE (SOLDER/LOCK TYPE) |
|------------|----------|-------|--------------------------------|
| X :±0.5 | X :±2° | DMN | YF |
| X.X :±0.3 | X.X :±1° | CHKD | Harfen |
| X.XX :±0.2 | | APVD | Quan |

Singatron Enterprise Co., Ltd.
信譽企業股份有限公司
CIRCULAR MIDDLE SIZE (SOLDER/LOCK TYPE)
MALE CONN. MALE 2 PIN(40A)
PART NO. 2CM3002-W02H00
SCALE 2:1 UNIT: mm
SIZE: A3 SHEET: 1 OF 1 REV: C

CUSTOMER COPY