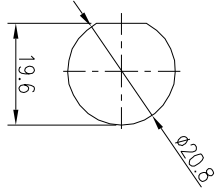
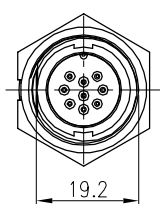
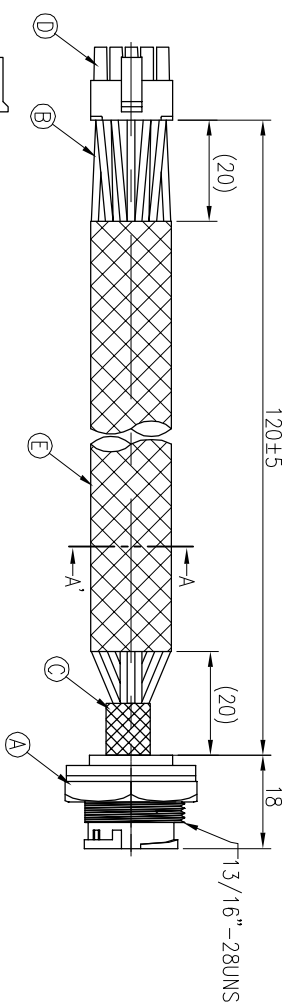


REV.	ECN NO.	OR DESCRIPTION	REVISED	DATE
A	PDR NO.:T160420-3A	JF		2017.01.11

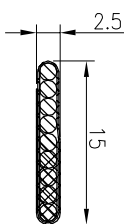


RECOMMENDED PANEL CUT-OUT



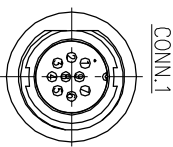
CONN.1

CONN.2

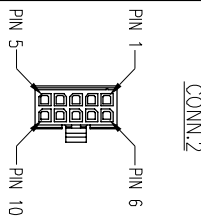


SECTION A-A'

9	WHITE	10
8	GARY	9
7	BLUE	8
6	GREEN	7
5	YELLOW	6
4	ORANGE	5
3	RED	4
2	BROWN	3
1	BLACK	2
CONN.1 WIRE COLOR		CONN.2
PIN OUT		



Pin Assignments
Front View



- NOTES:
1. WATERPROOF RATE: IP67
IP67: IMMERSED IN 1M WATER FOR 30 MINUTES.
 2. ELECTRICAL CHARACTERISTICS
TEMPERATURE RANGE: -40°C TO +105°C(FOR PANEL CONN.)
CURRENT RATING: 5A
DIELECTRIC WITHSTANDING VOLTAGE: 500V AC FOR ONE MINUTE
 3. SPECIFICATIONS:SEE "CIRCULAR SERIES SPECIFICATIONS".
 4. TO CONFORM TO SINGATRON HAZARDOUS SUBSTANCE FREE SPEC.
 5. GREEN PRODUCT IDENTIFICATION LABEL ON PACKAGING:
 6. FOR PANEL THICKNESS MAX OF 3.5mm

E	ACETATE TAPE	1	T=0.18mm	BLACK
D	CONNECTOR	1	NYLON 66 UL 94V-0.	BLACK
C	HEAT SHRINK TUBE	9	Phosphor Bronze	TIN PLATED
B	WIRE	9	300V 125°C	BLACK
A	WATERPROOF CONN.	9	UL 1007 22AWG	SEE PIN OUT
NO	DESCRIPTION	1	P/N:2CM3002-W093A0H	BLACK
UNLESS OTHERWISE SPECIFIED TOLERANCES		QTY	MATERIAL	PLATING & COLOR
Singatron Enterprise Co., Ltd. 信登企業股份有限公司				
TITLE CIRCULAR MIDDLE SIZE (SOLDER/LOCK TYPE)				
DWN	JF	PART NO.	2CM3002-W09303H	
CHKD	Yang	SCALE	1:1	UNIT: mm
APVD	Harlen	SIZE: A3	SHEET: 1 OF 1	REV: A

CUSTOMER COPY