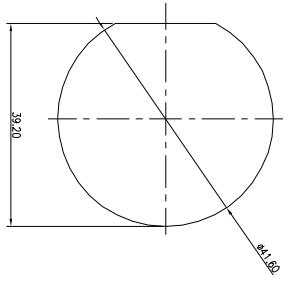
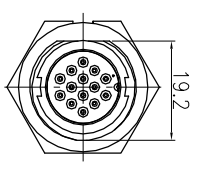
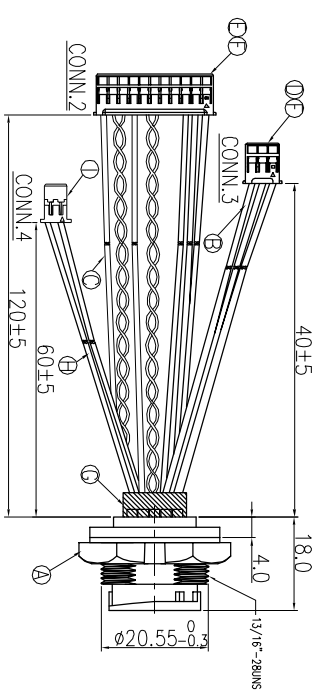


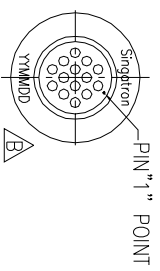
REV	ECN NO	OR DESCRIPTION	REVISED	DATE
A	PDR NO.:I200804-6A		MF	2020.11.25
B	ECN NO.:S202205-R09		EIrod	2022.05.31



RECOMMENDED PANEL CUT-OUT

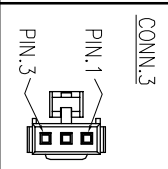
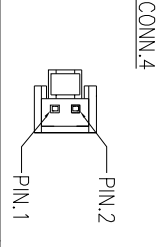
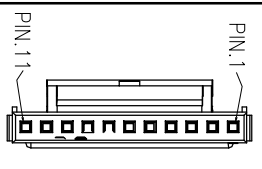
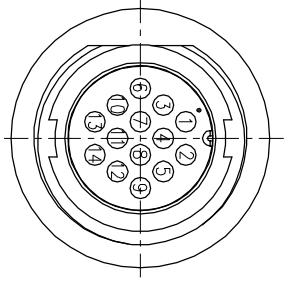


WATERPROOF RATE: IP67



14	BLACK(22AWG)	/	/	/	/
13	RED(22AWG)	/	/	/	/
12	BROWN(24AWG)	1	/	/	2
11	BLUE(24AWG)	2	/	/	1
10	GRAY(24AWG)	3	/	/	/
9	PURPLE(24AWG)	8	/	/	/
8	PINK(24AWG)	9	/	/	/
7	ORANGE(24AWG)	10	/	/	/
6	WHITE(24AWG)	11	/	/	/
5	WHITE(22AWG)	/	3	/	/
4	BROWN(22AWG)	/	2	/	/
3	BLUE(22AWG)	/	1	/	/
2	YELLOW(24AWG)	7	/	/	/
1	GREEN(24AWG)	6	/	/	/

CONN.1	WIRE COLOR	CONN.2	CONN.3	CONN.4
PIN OUT				



NOTES:

1. WATERPROOF RATE: IP67
2. ELECTRICAL CHARACTERISTICS
3. SPECIFICATIONS:SEE "CIRCULAR SERIES SPECIFICATIONS".
4. TO CONFORM TO SINGATRON HAZARDOUS SUBSTANCE FREE SPEC.
5. GREEN PRODUCT IDENTIFICATION LABEL ON PACKAGING:
6. FOR PANEL THICKNESS Max. OF 3.5mm
7. LAZE DATE CODE "YYMMDD".



1	CONNECTOR(C)	1	JST P/N:PAP-02V-S	WHITE
H	WIRE	2	JST P/N:SPHD-001T-P0.5	TIN PLATED
G	HEAT SHRINK TUBE	2	UL 1061 22AWG	SEE "PIN OUT"
F	TERMINAL	14	125°C 300V	BLACK
E	CONNECTOR(B)	12	TYU P/N:TU2008TP0	TIN PLATED
D	CONNECTOR(A)	1	TYU P/N:1U2008HND-11	WHITE
C	WIRE	1	TYU P/N:1U2008HND-03	WHITE
B	WIRE	9	UL 1061 24AWG	SEE "PIN OUT"
A	WATERPROOF CONN.	3	UL 1007 22AWG	SEE "PIN OUT"
NO	DESCRIPTION	1	P/N:2CM3002-W1430H	BLACK

UNLESS OTHERWISE SPECIFIED TOLERANCES

DECIMALS: ANGLES: X :±0.5 X :±2° X.X :±0.3 X.X :±1' X.XX :±0.2

DMN	EIrod	PART NO.2CM3002-W14310H	UNIT: mm	REV: B
CHKD	Jun	SCALE 2:1	SHEET: 1 OF 1	REV: B
APVD	Steve	SIZE: A3	CUSTOMER COPY	