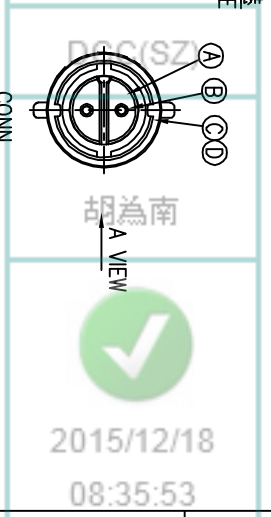
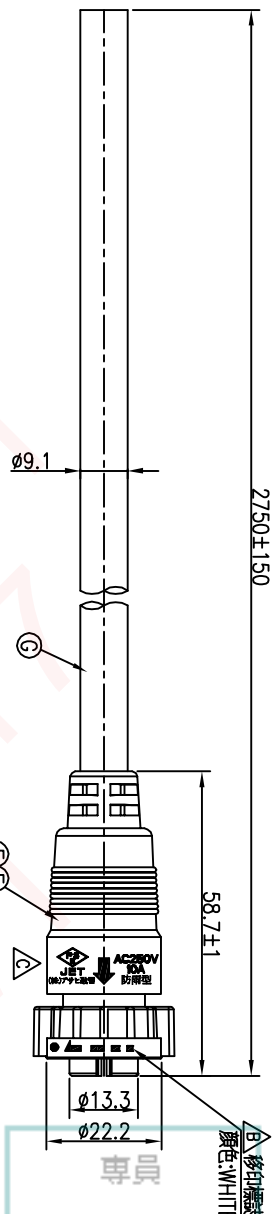
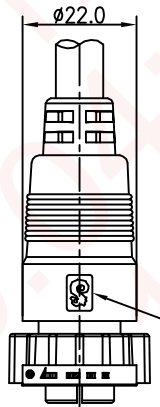
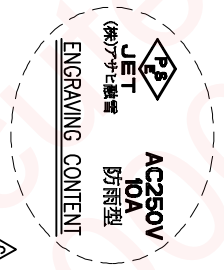


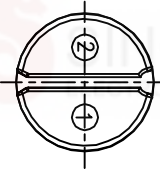
REV.	ECN NO OR DESCRIPTION	REVISED	DATE
A	PDR NO.:S130611-3D	JF	2013.11.11
B	ECN NO.:S140802	JF	2014.09.03
C	ECN NO.:S151202-C	JF	2015.12.14



WATERPROOF RATE: IP67



WHITE	2
BLACK	1
WIRE COLOR	CONN.
PIN OUT	
CONN.	



- NOTES:
1. WATERPROOF RATE: IP67  
IP67: IMMERSED IN 1M WATER FOR 30 MINUTES
  2. CURRENT RATING: 10A
  3. SPECIFICATIONS: SEE "CIRCULAR SERIES SPECIFICATIONS".
  4. TO CONFORM TO SINGATRON HAZARDOUS SUBSTANCE FREE SPEC.
  5. GREEN PRODUCT IDENTIFICATION LABEL ON PACKAGING:

G	CABLE	1	PSE 2PNC1 2*0.75mm <sup>2</sup> OD=9.1mm	BLACK(RUBBER JACKET)
F	INNER MOLD	1	TPU	NATURAL
E	OVER MOLD	1	PVC	BLACK
D	O-RING	1	EPDM	BLACK
C	LOCK NUT	1	PC9330	BLACK
B	FEMALE PIN	2	Phosphor Bronze	(1~3)u" GOLD PLATING OVER NICKEL PLATING
A	BODY	1	NYLON+GF	BLACK
NO	DESCRIPTION	QTY	MATERIAL	PLATING & COLOR
UNLESS OTHERWISE SPECIFIED TOLERANCES				
Singatron Enterprise Co., Ltd. 信譽企業股分有限公司				
TITLE: CIRCULAR MIDDLE SIZE (IP67) FEMALE CONN FEMALE PIN(2PIN)LOCK TYPE				
DECIMALS:	ANGLES:	PART NO.:2CM3004-W02403H		
X : ±0.5 X : ±2'		CHKD Yang	SCALE 1:1	UNIT: mm
XXX : ±0.3 X.X : ±1'		APVD Harlen	SIZE: A3	SHEET: 1 OF 1
XXX : ±0.2		REV: C		
CUSTOMER COPY				