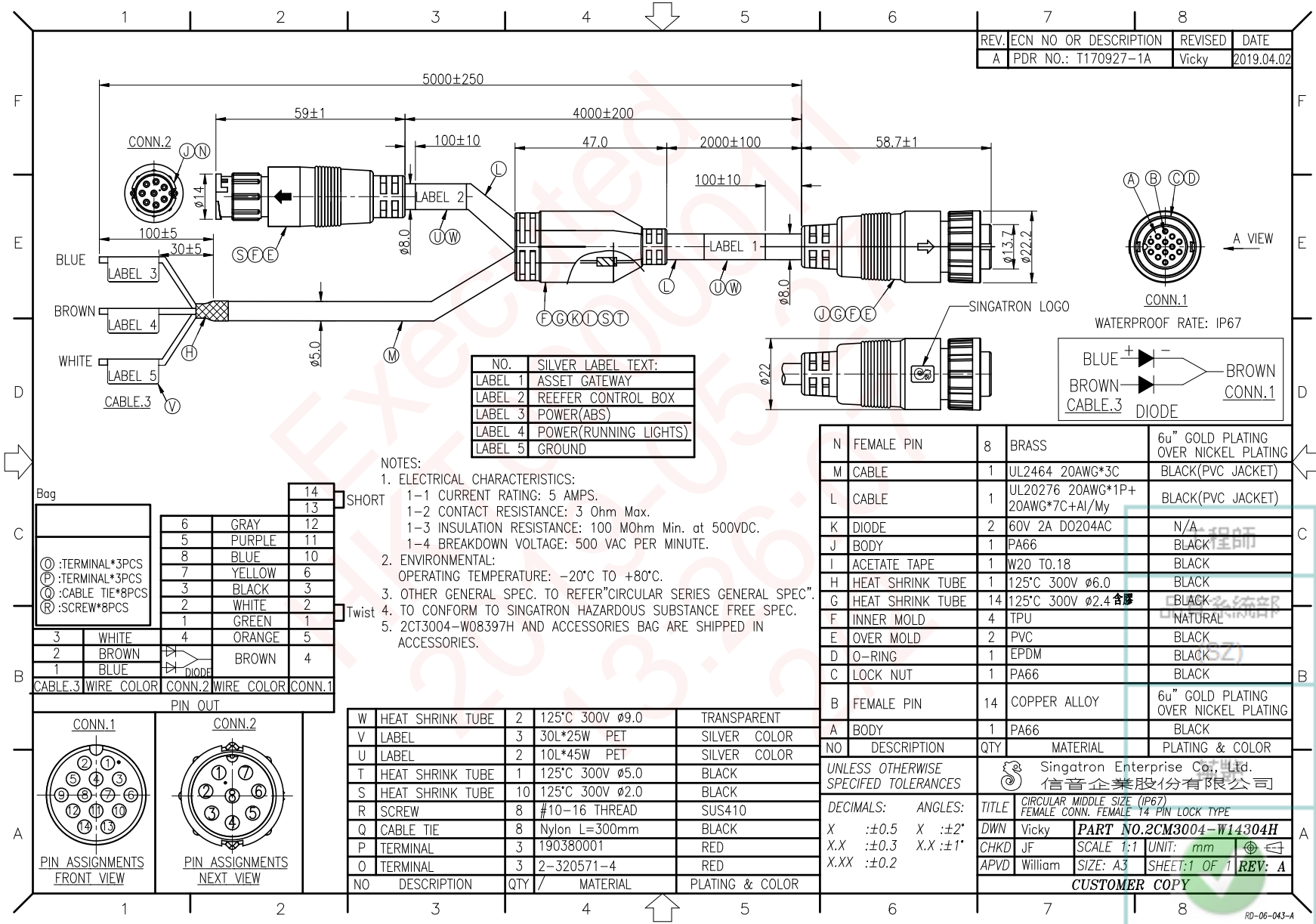


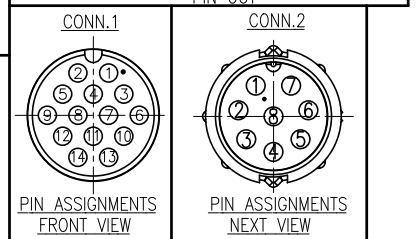
REV.	ECN NO OR DESCRIPTION	REVISED	DATE
A	PDR NO.: T170927-1A	Vicky	2019.04.02



NO.	SILVER LABEL TEXT:
LABEL 1	ASSET GATEWAY
LABEL 2	REEFER CONTROL BOX
LABEL 3	POWER(ABS)
LABEL 4	POWER(RUNNING LIGHTS)
LABEL 5	GROUND

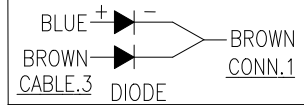
- NOTES:
- ELECTRICAL CHARACTERISTICS:
 - 1-1 CURRENT RATING: 5 AMPS.
 - 1-2 CONTACT RESISTANCE: 3 Ohm Max.
 - 1-3 INSULATION RESISTANCE: 100 MOhm Min. at 500VDC.
 - 1-4 BREAKDOWN VOLTAGE: 500 VAC PER MINUTE.
 - ENVIRONMENTAL:
 - OPERATING TEMPERATURE: -20°C TO +80°C.
 - OTHER GENERAL SPEC. TO REFER "CIRCULAR SERIES GENERAL SPEC".
 - TO CONFORM TO SINGATRON HAZARDOUS SUBSTANCE FREE SPEC.
 - 2CT3004-W08397H AND ACCESSORIES BAG ARE SHIPPED IN ACCESSORIES.

Bag	14	SHORT
①:TERMINAL*3PCS	6 GRAY	12
②:TERMINAL*3PCS	5 PURPLE	11
③:CABLE TIE*8PCS	8 BLUE	10
④:SCREW*8PCS	7 YELLOW	6
	3 BLACK	3
	2 WHITE	2
	1 GREEN	1
	4 ORANGE	5
	DIODE	BROWN
		4



W	HEAT SHRINK TUBE	2	125°C 300V Ø9.0	TRANSPARENT
V	LABEL	3	30L*25W PET	SILVER COLOR
U	LABEL	2	10L*45W PET	SILVER COLOR
T	HEAT SHRINK TUBE	1	125°C 300V Ø5.0	BLACK
S	HEAT SHRINK TUBE	10	125°C 300V Ø2.0	BLACK
R	SCREW	8	#10-16 THREAD	SUS410
Q	CABLE TIE	8	Nylon L=300mm	BLACK
P	TERMINAL	3	190380001	RED
O	TERMINAL	3	2-320571-4	RED
NO	DESCRIPTION	QTY	MATERIAL	PLATING & COLOR

N	FEMALE PIN	8	BRASS	6u" GOLD PLATING OVER NICKEL PLATING
M	CABLE	1	UL2464 20AWG*3C	BLACK(PVC JACKET)
L	CABLE	1	UL20276 20AWG*1P+20AWG*7C+Al/My	BLACK(PVC JACKET)
K	DIODE	2	60V 2A D0204AC	N/A
J	BODY	1	PA66	BLACK
I	ACETATE TAPE	1	W20 T0.18	BLACK
H	HEAT SHRINK TUBE	1	125°C 300V Ø6.0	BLACK
G	HEAT SHRINK TUBE	14	125°C 300V Ø2.4	BLACK
F	INNER MOLD	4	TPU	NATURAL
E	OVER MOLD	2	PVC	BLACK
D	O-RING	1	EPDM	BLACK
C	LOCK NUT	1	PA66	BLACK
B	FEMALE PIN	14	COPPER ALLOY	6u" GOLD PLATING OVER NICKEL PLATING
A	BODY	1	PA66	BLACK
NO	DESCRIPTION	QTY	MATERIAL	PLATING & COLOR



UNLESS OTHERWISE SPECIFIED TOLERANCES		Singatron Enterprise Co., Ltd. 信音企業股份有限公司	
DECIMALS:	ANGLES:	TITLE	CIRCULAR MIDDLE SIZE (IP67) FEMALE CONN. FEMALE 14 PIN LOCK TYPE
X :±0.5	X :±2'	DWN	Vicky
X.X :±0.3	X.X :±1'	CHKD	JF
X.XX :±0.2		APVD	William
		PART NO. 2CM3004-W14304H	
		SCALE	1:1
		UNIT	mm
		SHEET	1 OF 1
		REV	A
CUSTOMER COPY			

2019/05/16
13:28:07