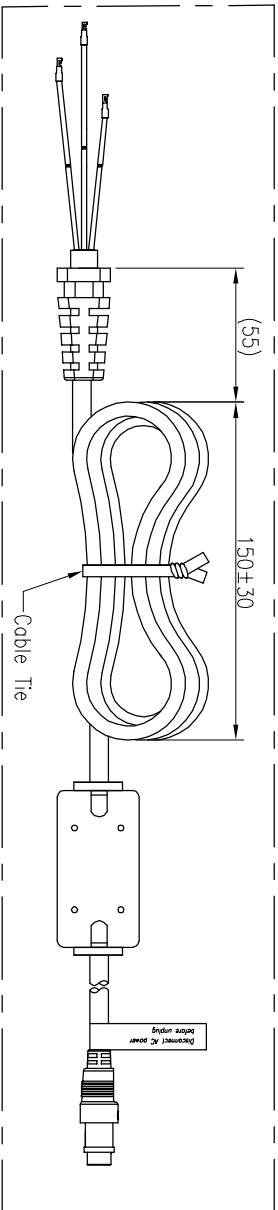
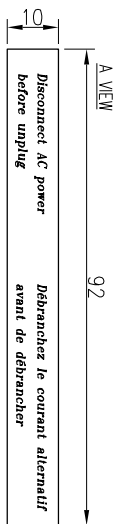
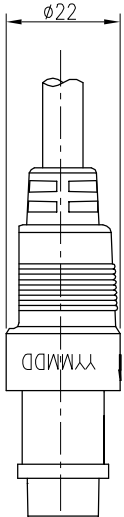
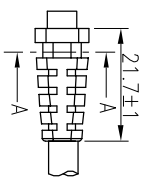
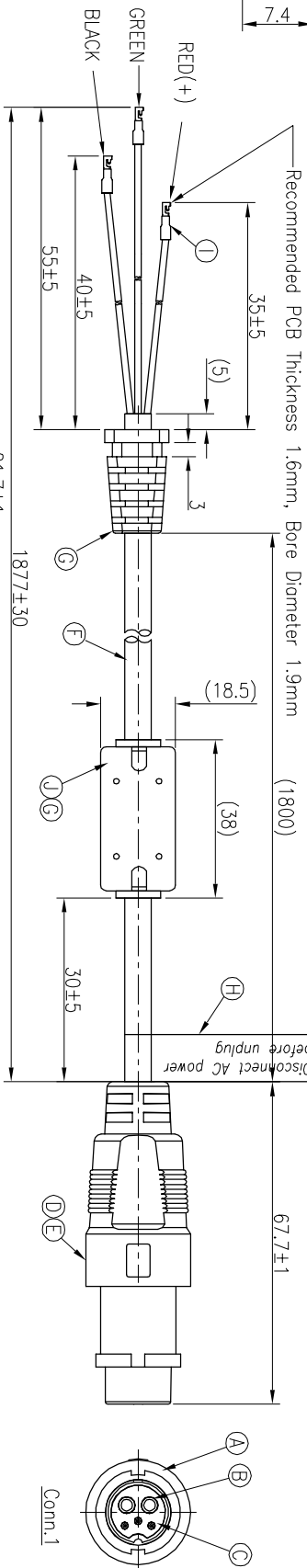
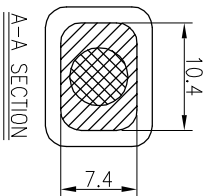
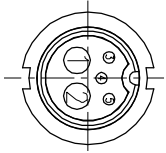


REV.	E/CN NO.	OR DESCRIPTION	REVISED	DATE
A	PDR	NO.:T210226-4A	RZ	2022.05.07



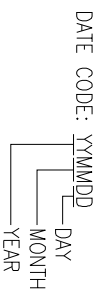
3	GREEN	PRESENT
2	BLACK	(-)
1	RED	(+)
CONN.1 WIRE COLOR FUNCTION		
PIN OUT		
CONN.1		



Front View  
Pin Assignments

NOTES:

- ELECTRICAL CHARACTERISTICS
  - RATING: DC42V 6A+2A
  - TEMPERATURE RANGE: -20°C TO +80°C
  - CONDUCT RESISTANCE: 3 Ohm Max.
  - HI-POT TEST 500VAC,5mA(1MINUTE)
  - INSULATION RESISTANCE: 100MΩ MIN. BY 500 VDC
- SPECIFICATIONS:SEE "CIRCULAR SERIES SPECIFICATIONS".
- TO CONFORM TO SINGATRON HAZARDOUS SUBSTANCE FREE SPEC.
- GREEN PRODUCT IDENTIFICATION LABEL ON PACKAGING: **GR-PA66**
- LIFE TEST: 1,000 CYCLES MIN.
- LASE DATE CODE "YYMMDD" ON TOP OF OVER MOLD



J	CORE	1	14.2*28.5*8	BLACK
I	TERMINAL	3	4TRJW1-B181103	TIN-PLATING
H	LABEL	1	PET L92*W10	WHITE
G	SR	1	PLASTIC	BLACK
F	CABLE	1	UL2464 22AWG*5C+AL (UV) OD:5.5mm	BLACK(PVC JACKET)
E	OVER MOLD	1	PLASTIC	BLACK
D	INNER MOLD	1	PLASTIC	NATURAL
C	MALE PIN	3	BRASS	GOLD PLATING OVER NICKEL PLATING
B	MALE PIN	2	BRASS	OVER NICKEL PLATING
A	BODY	1	NYLON+GF	BLACK
NO	DESCRIPTION	QTY	MATERIAL	PLATING & COLOR

UNLESS OTHERWISE SPECIFIED TOLERANCES

DECIMALS: ANGLES: TITLE CIRCULAR MIDDLE SIZE

FEMALE CONN. MALE PIN CONN. (2+3)PIN  
Suzhou Singatron Auto Electronics CO.,LTD.  
蘇州信益汽車電子有限公司

CHKD Jun SCALE 1:1 UNIT: mm  
APVD JF SIZE: A4 SHEET: 1 OF 1 REV: A  
CUSTOMER COPY