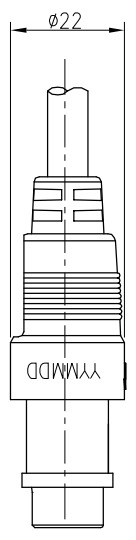
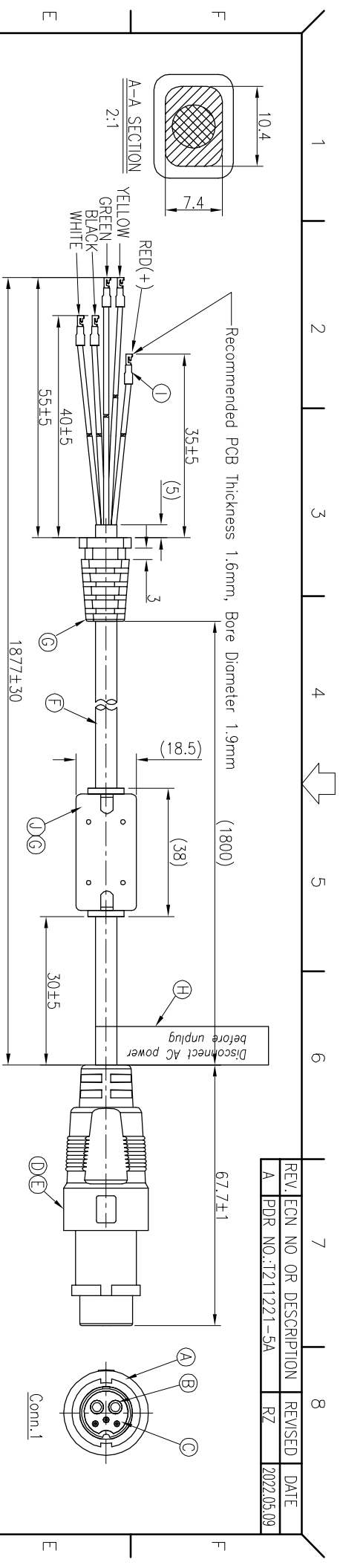
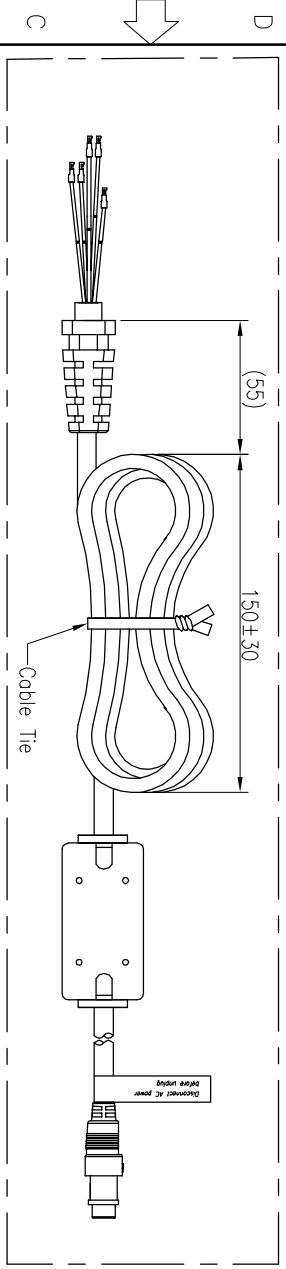


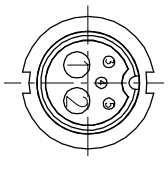
REV.	ECN NO.	OR DESCRIPTION	REVISED	DATE
A	PDR NO.:T211221-5A		RZ	2022.05.09



10
A VIEW
92
Disconnect AC power before unplugging
Débranchez le courant alternatif avant de débrancher

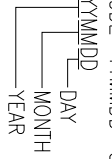


5	WHITE	CAN-L
4	YELLOW	CAN-H
3	GREEN	PRESENT
2	BLACK	(-)
1	RED	(+)
CONN.1 WIRE COLOR FUNCTION		
PIN OUT		
CONN.1		



Front View	
Pin Assignments	

- NOTES:
- ELECTRICAL CHARACTERISTICS
 - 1-1. RATING: DC42V 6A+2A.
 - 1-2. TEMPERATURE RANGE: -20°C TO +80°C.
 - 1-3. CONDUCT RESISTANCE: 3 Ohm Max.
 - 1-4. HI-POT TEST 500VAC,5mA(1MINUTE)
 - 1-5. INSULATION RESISTANCE: 100MOhm MIN. BY 500 VDC
 - SPECIFICATIONS:SEE "CIRCULAR SERIES SPECIFICATIONS".
 - TO CONFORM TO SINGATRON HAZARDOUS SUBSTANCE FREE SPEC.
 - GREEN PRODUCT IDENTIFICATION LABEL ON PACKAGING:
 - LIFE TEST: 1,000 CYCLES MIN.
 - LAST DATE CODE "YYMMDD" ON TOP OF OVER MOLD



J	CORE	1	14.2*28.5*8	BLACK
I	TERMINAL	5	4TRJW1-B181103	TIN-PLATING
H	LABEL	1	PET L92*W10	WHITE
G	SR	1	PVC	BLACK
F	CABLE	1	UL2464 22AWG*5C+AL (UV) OD:5.5mm	BLACK(PVC JACKET)
E	OVER MOLD	1	PLASTIC	BLACK
D	INNER MOLD	1	PLASTIC	NATURAL
C	MALE PIN	3	BRASS	GOLD PLATING OVER NICKEL PLATING
B	MALE PIN	2		
A	BODY	1	NYLON+GF	BLACK
NO	DESCRIPTION	QTY	MATERIAL	PLATING & COLOR

UNLESS OTHERWISE SPECIFIED TOLERANCES

DECIMALS: ANGLES: TITLE CIRCULAR MIDDLE SIZE

MM RZ PART NO.2CM3016-W05E06H

CHKD Jun SCALE 1:1 UNIT: mm APVD JF SIZE: A4 SHEET: 1 OF 1 REV: A

CUSTOMER COPY