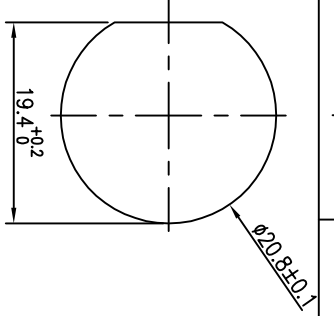
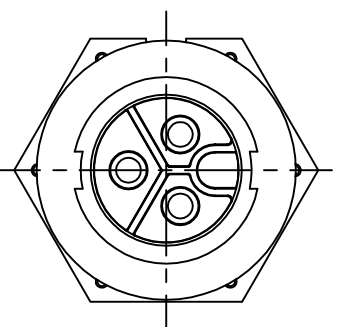
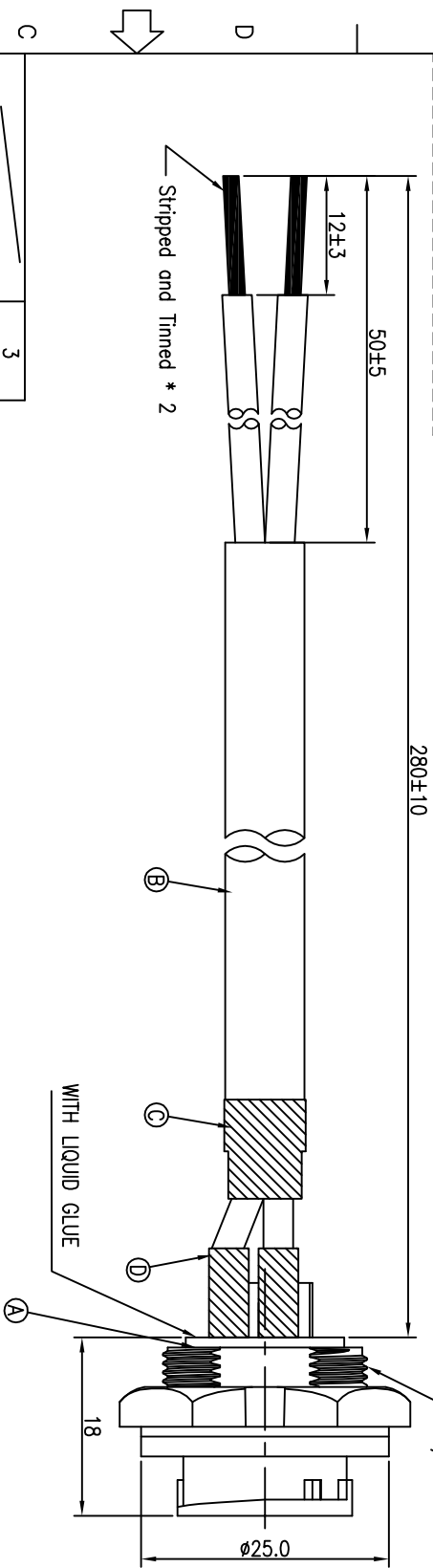


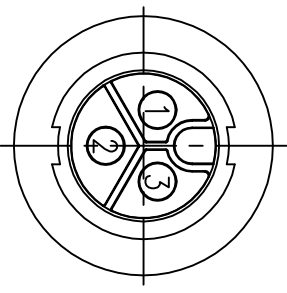
REV.	ECN NO OR DESCRIPTION	REVISED	DATE
A	PDR NO. T151126-8A	Yang	2016.10.13



RECOMMENDED PANEL CUT-OUT
FOR PANEL THICKNESS MAX OF 3.5mm



3	RED	CONN.
2	BLACK	CONN.
1	WIRE COLOR	CONN.



- NOTES:
- ELECTRICAL CHARACTERISTICS:
 - 1-1 CURRENT RATING: 20 AMPS.
 - 1-2 CONTACT RESISTANCE: 30 mOhm Max.
 - 1-3 INSULATION RESISTANCE: 100 MOhm Min. at 500VDC.
 - 1-4 BREAKDOWN VOLTAGE: 1000 VAC PER MINUTE.
 - MECHANICAL CHARACTERISTICS:
 - 2-1 TIGHTENING TORQUES: 0.8~1.0Nm(7.08~8.85lbf.in.)
 - ENVIRONMENTAL:
 - 3-1 OPERATING TEMPERATURE: -40°C TO +80°C.
 - 3-2 SEALING REQUIREMENTS: IP67.
 - 3-2 LIFE TEST: 1,000 CYCLES MIN.
 - OTHER GENERAL SPEC. TO REFER "CIRCULAR SERIES GENERAL SPEC".
 - FOR TECHNICAL DATA REFER TO YOUR LOCAL SINGATRON ELECTRONICS SALES OFFICE.
 - ALL DIMENSIONS ARE NOMINAL FOR REFERENCE ONLY UNLESS OTHERWISE STATED.
 - TO CONFORM TO SINGATRON HAZARDOUS SUBSTANCE FREE SPEC.
 - GREEN PRODUCT IDENTIFICATION LABEL ON PACKAGING: [ICP_PASS1](#).

D	HEAT SHRINK TUBE	2	125°C 300V	BLACK
C	HEAT SHRINK TUBE	1	125°C 300V	BLACK
B	CABLE	1	UL 2464 14AWG*2C+T (UV)	BLACK(PVC JACKET)
A	CONNECTOR	1	P/N:2CM3133-W03600H	BLACK

UNLESS OTHERWISE SPECIFIED TOLERANCES

DECIMALS:	ANGLES:
X :±0.5	X :±2°
X.X :±0.3	X.X :±1°
X.XX :±0.2	

Singatron Enterprise Co., Ltd.
信亨企業股份有限公司

TITLE: CIRCULAR MIDDLE SIZE (SOLDER/LOCK TYPE) MALE CONN. (3PIN/20A) REAR MOUNT
DRAWN: Yang
CHECKED: Harlen
APVD: Steve

PART NO. 2CM3133-W03601H
SCALE 2:1
UNIT: mm
SIZE: A3
SHEET: 1 OF 1
REV: A