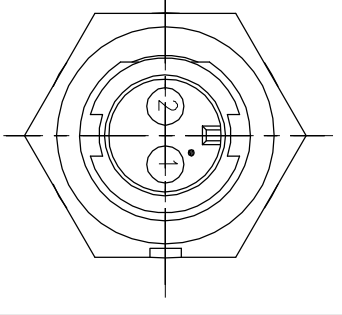
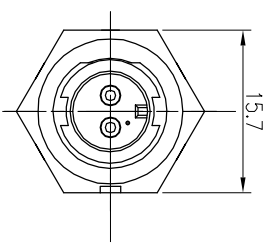
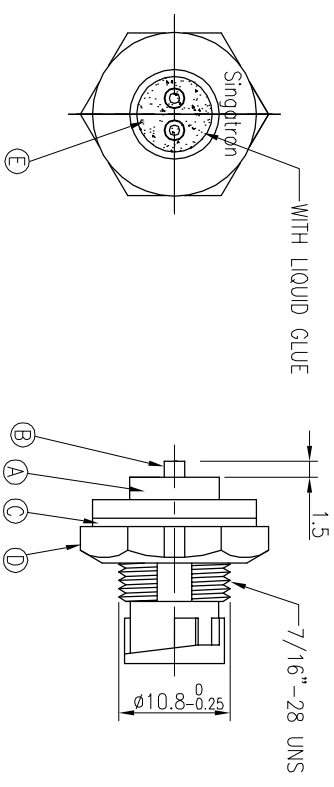
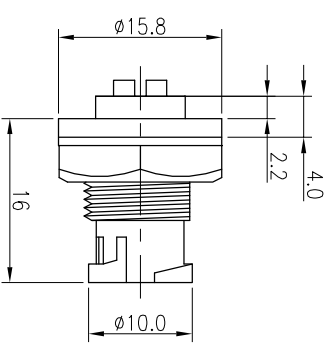


RECOMMENDED PANEL CUT-OUT



PIN ASSIGNMENTS
FRONT VIEW

- NOTES:
1. WATERPROOF RATE: IP67
IP67: IMMERSED IN 1M WATER FOR 30 MINUTES
 2. ELECTRICAL CHARACTERISTICS
TEMPERATURE RANGE: -40°C TO +100°C
CURRENT RATING: 5A
DIELECTRIC WITHSTANDING VOLTAGE: 500V AC FOR ONE MINUTE
 3. SPECIFICATIONS:SEE "CIRCULAR SERIES SPECIFICATIONS".
 4. TO CONFORM TO SINGATRON HAZARDOUS SUBSTANCE FREE SPEC.
 5. GREEN PRODUCT IDENTIFICATION LABEL ON PACKAGING:
 6. FOR PANEL THICKNESS MAX OF 3.2mm

REV.	ECN NO.	OR DESCRIPTION	REVISED	DATE
A	PDR NO:1091105-4B		Harlen	2009.09.12
B	ECN NO:S121109		YF	2009.09.12
C	ECN NO.:S202004-R14		RZ	2020.04.30

E	LIQUID GLUE	1	N/A	BLACK
D	NUT	1	NYLON	BLACK
C	GASKET	1	EPDM	BLACK
B	MALE PIN	2	BRASS	6u" GOLD PLATING OVER NICKEL PLATING
A	BODY	1	NYLON	BLACK
NO	DESCRIPTION	QTY	MATERIAL	PLATING & COLOR
UNLESS OTHERWISE SPECIFIED TOLERANCES				
Singatron Enterprise Co., Ltd. 信登企業股份有限公司				
TITLE: CIRCULAR MINI SIZE (SOLDER TYPE) MALE CONN. MALE 2PIN(SA) LOCK TYPE				
DECIMALS:	ANGLES:			
X :±0.5	X :±2°			
X.X :±0.3	X.X :±1°			
X.XX :±0.2				
DWN	RZ	PART NO.2CN3002-W02300	SCALE 2:1	UNIT: mm
CHKD	Cerry	SIZE: A3	SHEET: 1 OF 1	REV: C
APVD	William	CUSTOMER COPY		