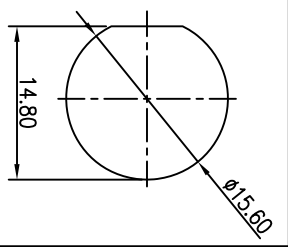
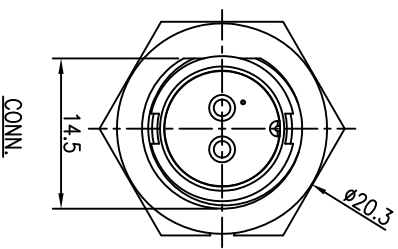
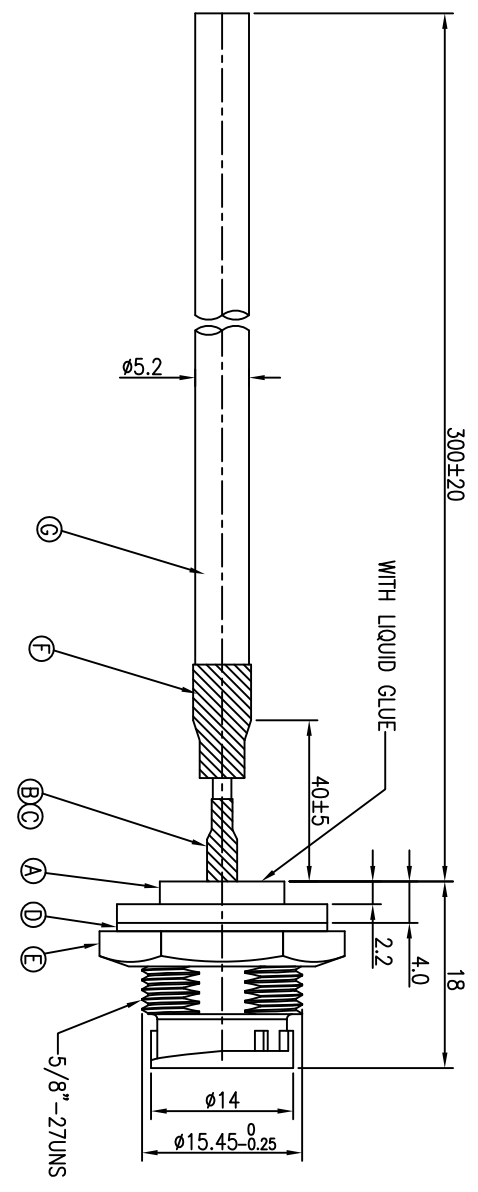


REV.	ECN NO OR DESCRIPTION	REVISED	DATE
A	PDR NO.:S100924-2A	Shown	2010.11.05

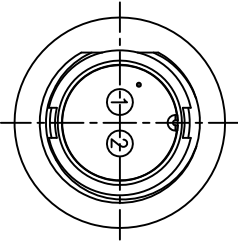


PANEL CUT-OUT  
RECOMMENDED.



BLACK	2
RED	1
WIRE COLOR	CONN.
PIN OUT	

CONN.



- NOTES:
1. WATERPROOF RATE: IP67
  2. CURRENT RATING: 10A
  3. SPECIFICATIONS: SEE "CIRCULAR SERIES SPECIFICATIONS"
  4. TO CONFORM TO SINGATRON HAZARDOUS SUBSTANCE FREE SPEC.
  5. GREEN PRODUCT IDENTIFICATION LABEL ON PACKAGING:
  6. FOR PANEL THICKNESS MAX OF 3.5mm

NO	DESCRIPTION	QTY	MATERIAL	PLATING & COLOR
A	BODY	1	NYLON+33%GF	BLACK
B	MALE PIN	2	BRASS	6u" GOLD PLATING OVER NICKEL PLATING
C	HEAT SHRINK TUBE	2	125° 300V L=15mm	BLACK
D	GASKET	1	EPDM	BLACK
E	NUT	1	NYLON+33%GF	BLACK
F	HEAT SHRINK TUBE	1	125° 300V L=20mm	BLACK
G	CABEL	1	UL2464 18AWG*2C+T UV RESISTANT OD=5.2	BLACK

UNLESS OTHERWISE SPECIFIED TOLERANCES

DECIMALS: ANGLES:

±0.5 X ±2°  
±0.3 X X ±1°  
X.XX ±0.2

Singatron Enterprise Co., Ltd.  
信譽企業股份有限公司  
CIRCULAR STANDARD SIZE (SOLDER/LOCK TYPE)  
TITLE MALE CONN. MALE 3PIN(10A)

DWN Shown PART NO. 2CT3002-W02403  
CHKD Steve SCALE 2:1 UNIT: mm  
APVD Max SIZE: A3 SHEET: 1 OF 1 REV: A

CUSTOMER COPY