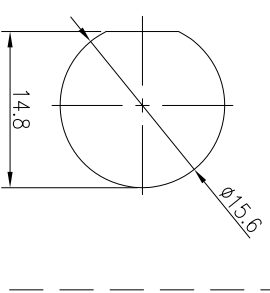
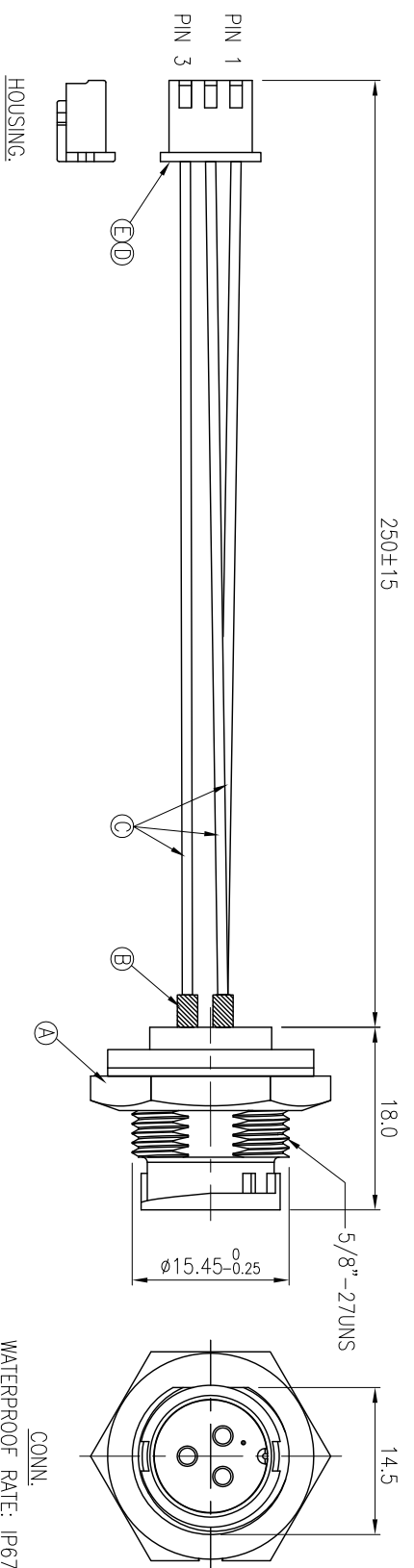
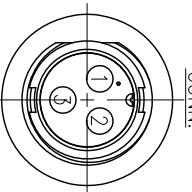


REV.	ECN NO OR DESCRIPTION	REVISED	DATE
A	PDR NO.:S130424-2A	JF	2013.11.11



RECOMMENDED PANEL CUT-OUT

2	BLUE	3
3	BLACK	2
1	BROWN	1
HOUSING WIRE COLOR		CONN.
PIN OUT		CONN.



Pin Assignments
Front View

- NOTES:
1. WATERPROOF RATE: IP67
 2. CURRENT RATING: 10A
 3. SPECIFICATIONS:SEE "CIRCULAR SERIES SPECIFICATIONS."
 4. TO CONFORM TO SINGATRON HAZARDOUS SUBSTANCE FREE SPEC.
 5. GREEN PRODUCT IDENTIFICATION LABEL ON PACKAGING: **GREEN PASS**
 6. FOR PANEL THICKNESS MAX OF 3.5mm

E	TERMINAL	3	P/N:4TRJMT-A250101	TINNED
D	HOUSING	1	P/N:4HSJMT-A250103	WHITE
C	WIRE	3	UL 1007 22AWG	SEE PIN OUT
B	HEAT SHRINK TUBE	3	φ3.0*10mm	BLACK
A	PANEL CONN.	1	P/N:2CT3002-W03400	BLACK
NO	DESCRIPTION	QTY	MATERIAL	PLATING & COLOR

UNLESS OTHERWISE SPECIFIED TOLERANCES

DECIMALS:	ANGLES:
X :±0.5	X :±2°
X.X :±0.3	X.X :±1°
X.XX :±0.2	

Singatron Enterprise Co., Ltd.
信亨企業股份有限公司

CIRCULAR STANDARD SIZE (SOLDER TYPE)
MALE CONN. MALE 3 PIN

PART NO.2CT3002-W03406H

SCALE 2:1 UNIT: mm

SIZE: A3 SHEET:1 OF 1 REV: A

CUSTOMER COPY