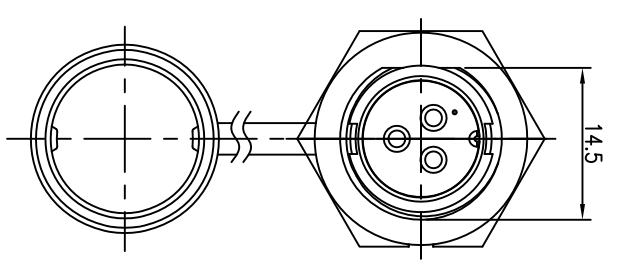
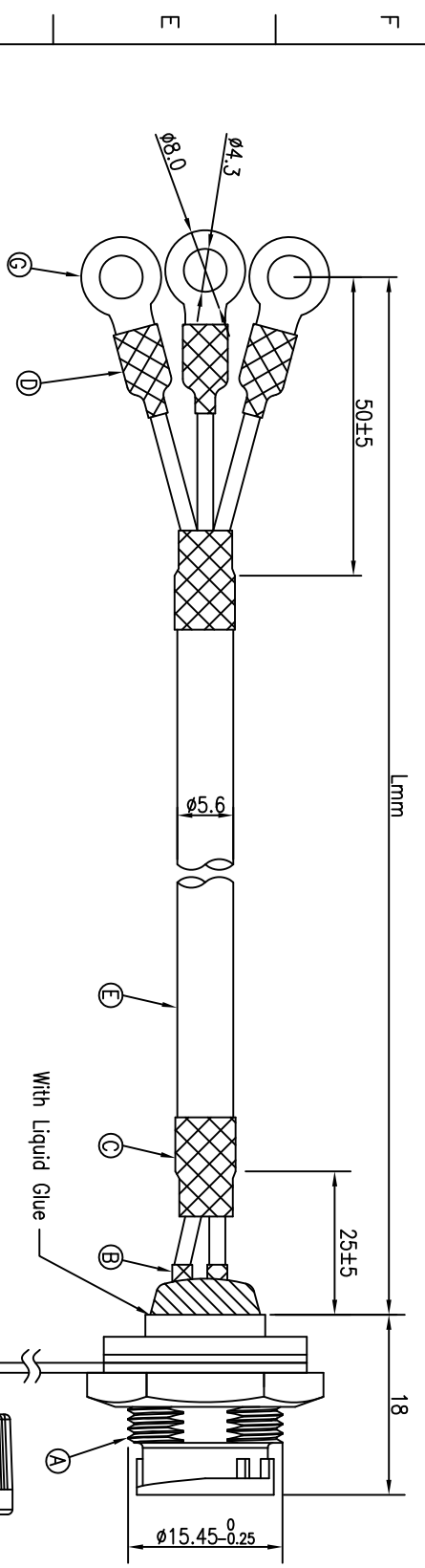


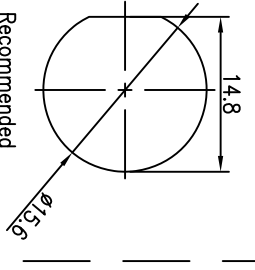
REV.	ECN NO. OR DESCRIPTION	REVISED	DATE
A	PDR NO:S101116-7B	LILY	2010.11.24



CONN. WATERPROOF RATE: IP67

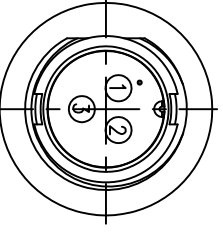
Conn.1

P/N	CABLE L(mm)
2CT3002-W03402	250±10
2CT3002-W03403	280±10



Recommended
Pane CUT-OUT

YELLOW	3
WHITE	2
BLACK	1
WIRE COLOR	CONN.1
PIN OUT	



Pin Assignments
Front View

NOTES:

1. WATERPROOF RATE: IP67
IP67: IMMERSED IN 1M WATER FOR 30 MINUTES
2. CURRENT RATING: 10A
3. SPECIFICATIONS:SEE "CIRCULAR SERIES SPECIFICATIONS".
4. TO CONFORM TO SINGATRON HAZARDOUS SUBSTANCE FREE SPEC.
5. GREEN PRODUCT IDENTIFICATION LABEL ON PACKAGING:
6. REPRESENT CRITICAL DIMENSIONS.

G	TERMINAL	3	KST RNB1.25-4	TIN PLATING
F	Waterproof Cap	1	P/N:2CT3000-W0000W	BLACK
E	CABLE	1	UL2464 18AWG*3C+ Al/My(UV RESISTANT) OD=5.6	BLACK(PVC JACKET)
D	SHRINK TUBE	3	Ø4.0*10	BLACK
C	SHRINK TUBE	2	Ø6.0*20	BLACK
B	SHRINK TUBE	3	Ø3.5*7	BLACK
A	PANEL CONN.	1	P/N:2CT3002-W03400	BLACK
NO	DESCRIPTION	QTY	MATERIAL	PLATING & COLOR

UNLESS OTHERWISE SPECIFIED TOLERANCES

Singatron Enterprise Co., Ltd.
信音企業股份有限公司

CIRCULAR STANDARD SIZE (SOLDER TYPE)
MALE CONN. MALE 3PIN

DECIMALS:	ANGLES:
X : ±0.5	X : ±2°
X.X : ±0.3	X.X : ±1°
X.XX : ±0.2	

TITLE	LILY	PART NO.	2CT3002-W0340X
DWN	Steve	SCALE	1:1
CHKD	Mox	UNIT	mm
APVD		SIZE	A3
		SHEET	1 OF 1
		REV	A

CUSTOMER COPY