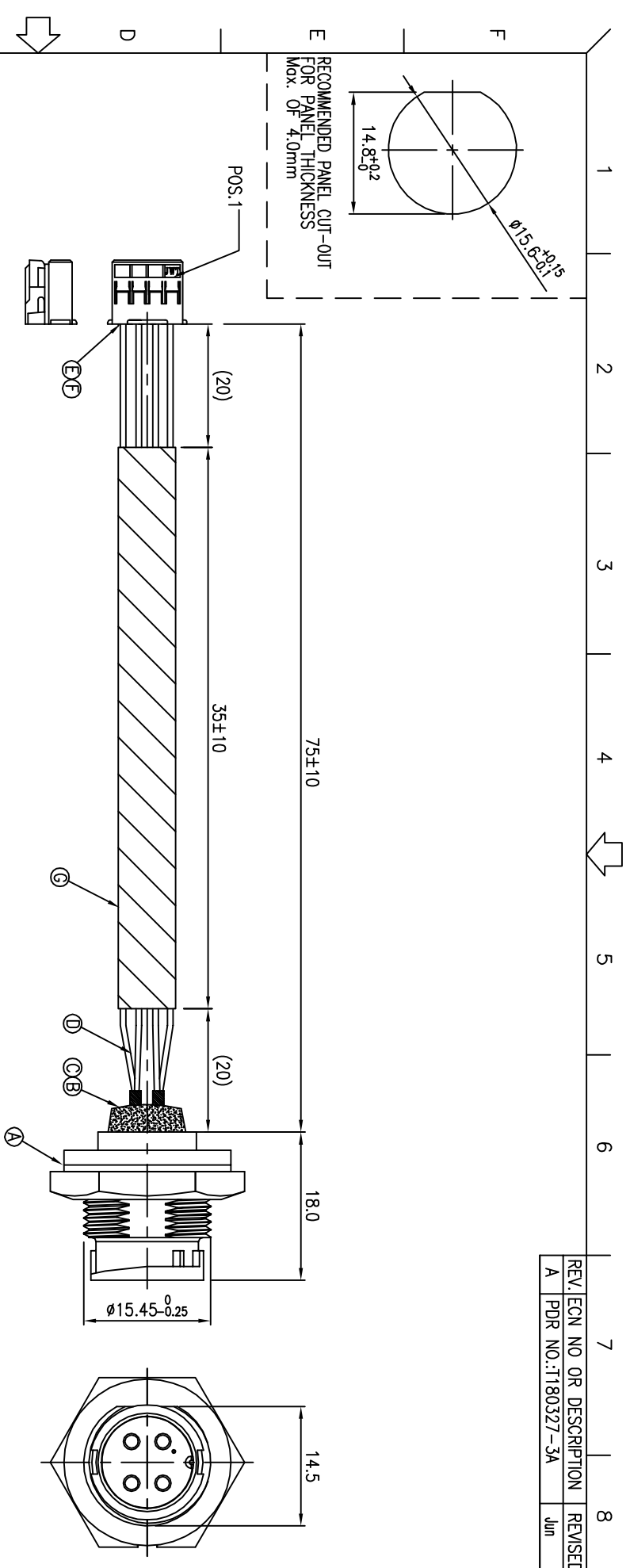
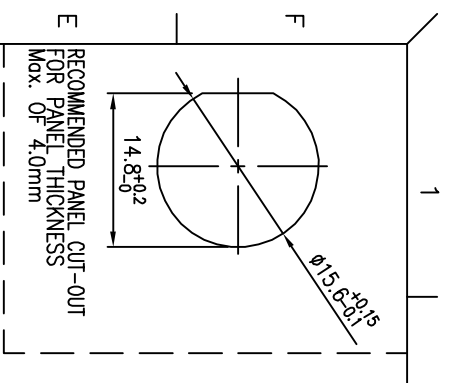
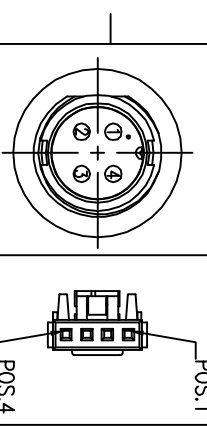


REV.	ECN NO	OR DESCRIPTION	REVISED	DATE
A	PDR NO.:T180327-3A		Jun	2018.11.26



CONN.1	WIRE COLOR	CONN.2
4	YELLOW	4
3	RED	3
2	GREEN	2
1	WHITE	1



Pin Assignments
Front View

1 2 3 4 5 6 7 8

- NOTES:
- ELECTRICAL CHARACTERISTICS:
 - 1-1 CURRENT RATING: 5 AMPS.
 - 1-2 CONTACT RESISTANCE: 3 Ohm Max.
 - 1-3 INSULATION RESISTANCE: 100 MOhm Min at 500VDC.
 - 1-4 BREAKDOWN VOLTAGE: 500 VAC PER MINUTE.
 - MECHANICAL CHARACTERISTICS:
 - TIGHTENING TORQUES: 0.8~1.0Nm(7.08~8.85lbf.in.).
 - ENVIRONMENTAL:
 - 3-1 OPERATING TEMPERATURE: -20°C TO +80°C.
 - 3-2 SEALING REQUIREMENTS:IP67.
 - 3-3 LIFE TEST: 1,000 CYCLES MIN.
 - OTHER GENERAL SPEC TO REFER "CIRCULAR SERIES GENERAL SPEC".
 - FOR TECHNICAL DATA REFER TO YOUR LOCAL SINGATRON ELECTRONICS SALES OFFICE.
 - ALL DIMENSIONS ARE NOMINAL FOR REFERENCE ONLY UNLESS OTHERWISE STATED.
 - TO CONFORM TO SINGATRON HAZARDOUS SUBSTANCE FREE SPEC.
 - GREEN PRODUCT IDENTIFICATION LABEL ON PACKAGING:

WATERPROOF RATE: IP67

G	HEAT SHRINK TUBE	1	125°C 300V	BLACK
F	TERMINAL	4	A2008TOP-2	
E	HOUSING	1	JMTA2008H100-4P	WHITE
D	WIRE	4	UL1007 24AWG	SEE PIN OUT
C	UV GLUE	1	8861	WHITE
B	HEAT SHRINK TUBE	4	φ2 125°C 300V	BLACK
A	PANEL CONN.	1	P/N:2CT3002-W04300	BLACK
NO	DESCRIPTION	QTY	MATERIAL	PLATING & COLOR

UNLESS OTHERWISE SPECIFIED TOLERANCES

DECIMALS: ANGLES:

X :±0.5 X :±2
X.X :±0.3 X.X :±1
X.XX :±0.2

APVD William SIZE: A3 SHEET: 1 OF 1 REV: A

CUSTOMER COPY