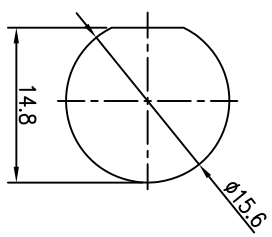
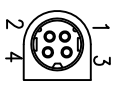


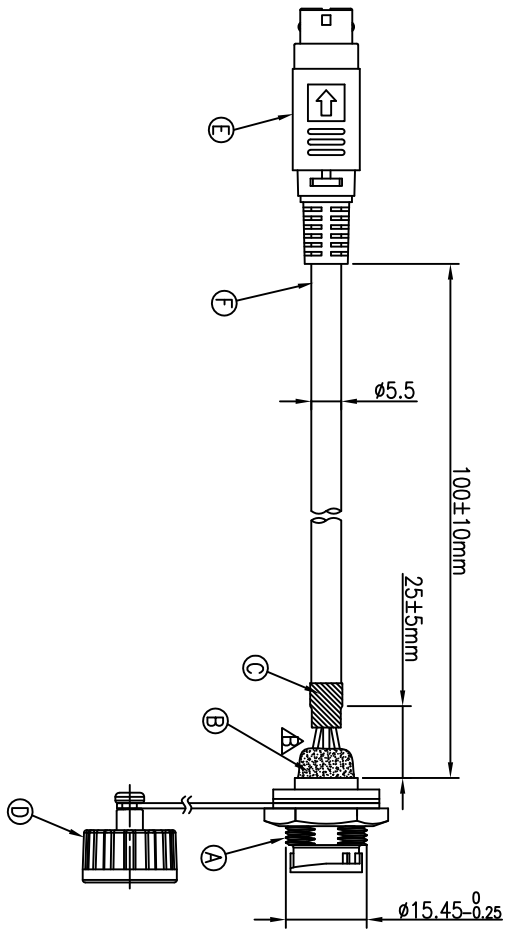
REV.	ECN NO OR DESCRIPTION	REVISED	DATE
A	PDR NO.:T09012011A	Steve	2009.04.28
B	ECN NO.:S130201	Lily	2013.05.16



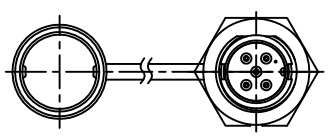
RECOMMENDED PANEL CUT-OUT



POWER 4 Pin Plug
(Lock Type)
CONN.2



WATERPROOF RATE: IP67
Conn.1

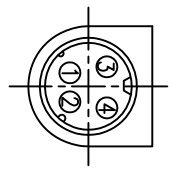


Shield	DRAIN	5
4	YELLOW	4
3	RED	3
2	BLUE	2
1	BLACK	1

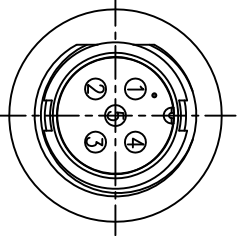
CONN.2	WIRE COLOR	Conn.1
	PIN OUT	



Conn.1



Pin Assignments
Front View



Pin Assignments
Front View

- NOTES:
1. WATERPROOF RATE: IP67
IP67: IMMERSED IN 1M WATER FOR 30 MINUTES
 2. CURRENT RATING: 5A
 3. SPECIFICATIONS:SEE "CIRCULAR SERIES SPECIFICATIONS".
 4. TO CONFORM TO SINGATRON HAZARDOUS SUBSTANCE FREE SPEC.
 5. GREEN PRODUCT IDENTIFICATION LABEL ON PACKAGING:

F	CABLE	1	UL2464 20AWG*4C+ D+AL, PVC JACKET	BLACK
E	POWER 4P PLUG	1	8件式粗差式	BLACK
D	Waterproof Cap	1	P/N:2CT3000-W0000W	BLACK
C	SHRINK TUBE	1	φ6.0*16	BLACK
B	THERMAL GLUE	1	φ7mm	WHITE
A	PANEL CONN.	1	P/N:2CT3002-W05300	BLACK

NO	DESCRIPTION	QTY	MATERIAL	PLATING & COLOR
UNLESS OTHERWISE SPECIFIED TOLERANCES				
Singatron Enterprise Co., Ltd. 信亨企業股份有限公司				
TITLE CIRCULAR STANDARD SIZE (SOLDER TYPE)				
DWN MLE CONN. MALE 5PIN TO POWER 4P PLUG				
CHKD Lily PART NO.2CT3002-W053A2				
APVD Quon SIZE: A3 SHEET: 1 OF 1 REV:B				

DECIMALS:	ANGLES:
X :±0.5	X :±2°
X.X :±0.3	X.X :±1'
X:XX :±0.2	

CUSTOMER COPY				
---------------	--	--	--	--