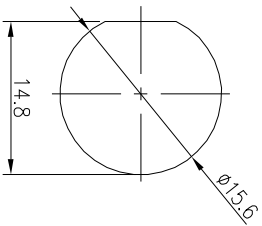
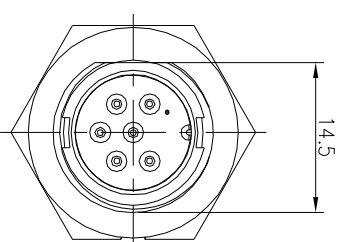
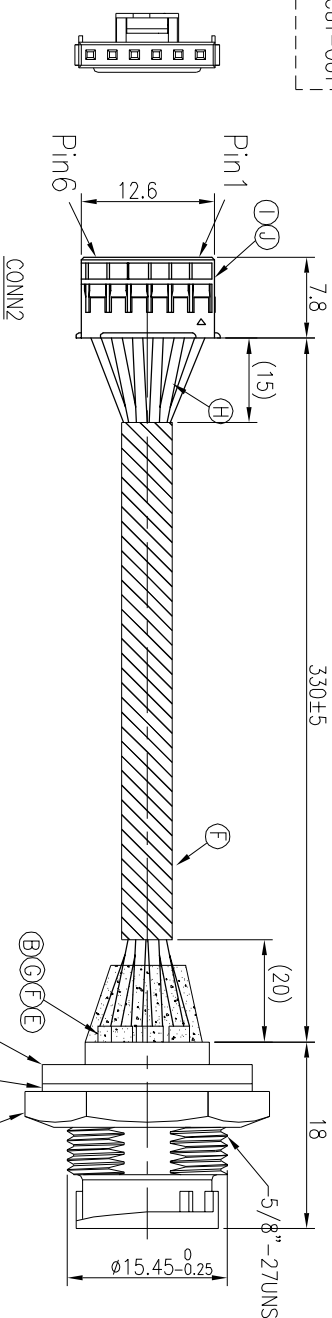


REV.	ECN NO OR DESCRIPTION	REVISED	DATE
A	PDR NO.:T210810-2A	RZ	2022.11.30



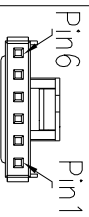
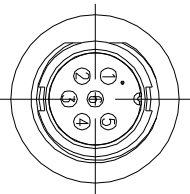
RECOMMENDED PANEL CUT-OUT



CONN1

WATERPROOF RATING:IP67

Wire Colour	CONN.1	CONN.2
RED	1	6
BLACK	2	5
BROWN	3	4
GREEN	4	3
BLUE	5	2
WHITE	6	1



PIN ASSIGNMENTS  
FRONT VIEW

- NOTES:
1. WATERPROOF RATING: IP67(WHEN PROPERLY MATED)  
IP67: IMMERSED IN 1M WATER FOR 30 MINUTES
  2. ELECTRICAL CHARACTERISTICS  
TEMPERATURE RANGE: -25°C TO +85°C
  3. SPECIFICATIONS:SEE "CIRCULAR SERIES SPECIFICATIONS".
  4. TO CONFORM TO SINGATRON HAZARDOUS SUBSTANCE FREE SPEC.
  5. GREEN PRODUCT IDENTIFICATION LABEL ON PACKAGING:
  6. FOR PANEL THICKNESS MAX OF 4.0mm

J	HOUSING	1	TU2008HNO-06	WHITE
I	TERMINAL	6	TU2008TPO-A	TIN-PLATED
H	WIRE	6	UL1430 24AWG TEMPERATURE RANGE:105°C	SEE PIN OUT
G	UV GLUE	1	N/A	NATURAL
F	TUBE	1	125°C 300V	BLACK
E	LIQUID GLUE	1	N/A	BLACK
D	NUT	1	NYLON	BLACK
C	GASKET	1	EPDM	BLACK
B	MALE PIN	6	BRASS	GOLD PLATING OVER NICKEL PLATING
A	BODY	1	NYLON	BLACK
NO	DESCRIPTION	QTY	MATERIAL	PLATING & COLOR

UNLESS OTHERWISE SPECIFIED TOLERANCES

DECIMALS: ANGLES:

:.0.5 X :±2'  
X.X :.0.3 X.X :±1'  
X.XX :.0.2

Suzhou Singatron Auto Electronics CO.,LTD.  
蘇州高營汽車電子有限公司

TITLE: CIRCULAR STANDARD SIZE (SOLDER/LOCK TYPE)  
MALE CONN. MALE 6PIN

DWN RZ PART NO.2CT93002-W06311H  
CHKD JF SCALE 2:1 UNIT: mm  
APVD JF SIZE: A4 SHEET: 1 OF 1 REV: A

CUSTOMER COPY