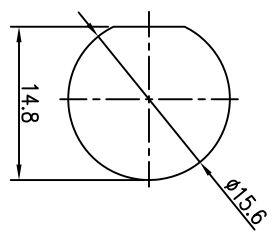
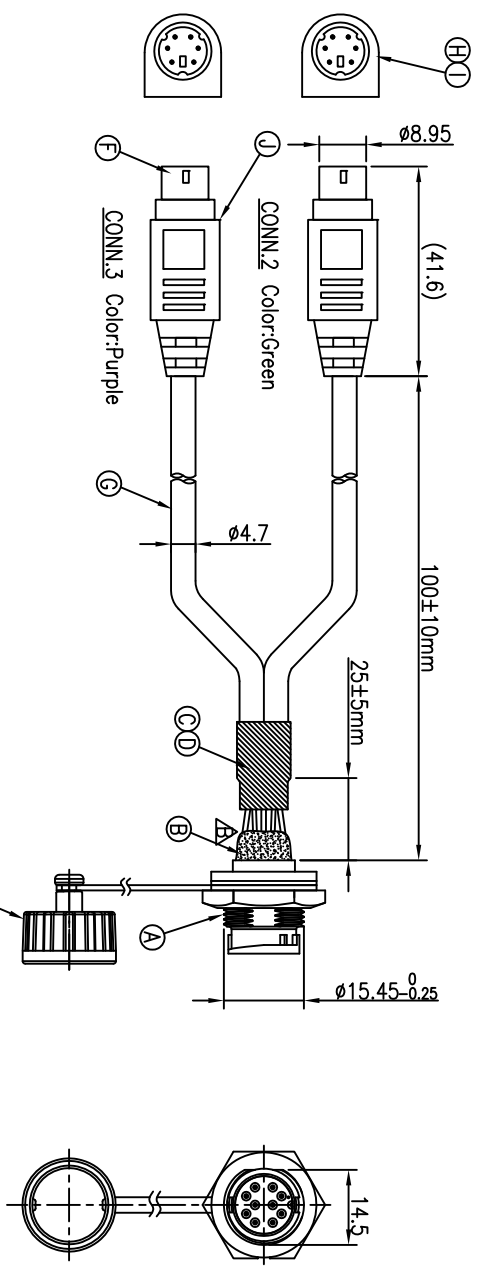


REV.	ECN NO OR DESCRIPTION	REVISION	DATE
A	PDR NO.:T090120-9A	Steve	2009.04.29
B	ECN NO.:S130201 Δ	LILY	2013.05.16



RECOMMENDED PANEL CUT-OUT

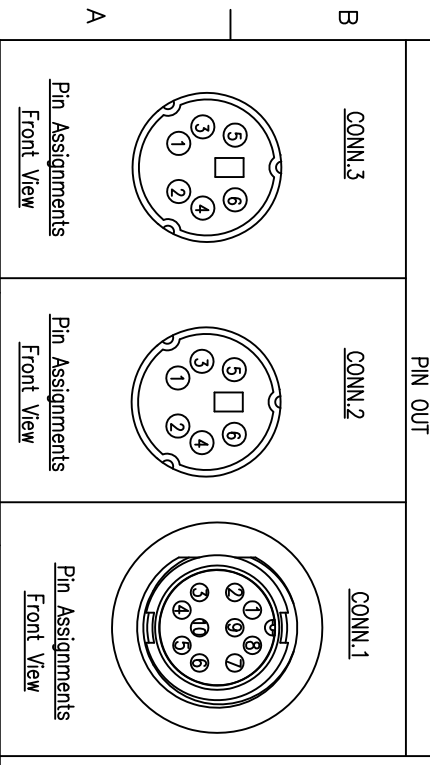


CONN. WATERPROOF RATE: IP67
Conn.1

CONN.3	Shield	DRAIN	9
	3	YELLOW	8
	5	BLUE	7
	1	BLACK	6
	4	GREEN	5
	Shield	DRAIN	10
	3	YELLOW	4
	5	BLUE	3
	1	BLACK	2
	4	GREEN	1
		WIRE COLOR	CONN.1

PIN OUT

NOTES:
1. WATERPROOF RATE: IP67
IP67: IMMERSED IN 1M WATER FOR 30 MINUTES
2. CURRENT RATING: 2A
3. SPECIFICATIONS:SEE "CIRCULAR SERIES SPECIFICATIONS".
4. TO CONFORM TO SINGATRON HAZARDOUS SUBSTANCE FREE SPEC.
5. GREEN PRODUCT IDENTIFICATION LABEL ON PACKAGING: **GREEN PASS**



Pin Assignments Front View

J	OVER MOLD	1	PVC	PURPLE
I	INNER MOLD	2	LD-PE	NATURE
H	OVER MOLD	1	PVC	GREEN
G	CABLE	1	UL2464 26AWG*4C +D+AL, PVC JACKET	BLACK
F	CONNECTOR	2	6PIN MALE MINI DIN	BLACK
E	Waterproof Cap	1	P/N:2CT3000-W0000W	BLACK
D	SHRINK TUBE	1	φ5.0*10	BLACK
C	SHRINK TUBE	1	φ10.0*20	BLACK
B	THERMAL GLUE	1	φ7mm	WHITE
A	PANEL CONN.	1	P/N:2CT3002-W10200	BLACK
NO	DESCRIPTION	QTY	MATERIAL	PLATING & COLOR

UNLESS OTHERWISE SPECIFIED TOLERANCES

Singatron Enterprise Co., Ltd.
信亨企業股份有限公司

CIRCULAR STANDARD SIZE (SOLDER TYPE)
MALE CONN. MALE TO PIN TO MINI DIN PLUG

DECIMALS: ANGLES: X :±0.5 X :±2
XX :±0.3 XX :±1
XXX :±0.2

TITLE: CIRCULAR STANDARD SIZE (SOLDER TYPE)
DWN: LILY PART NO. 2CT3002-W10205
CHKD: Horten SCALE 1:1 UNIT: mm
APVD: Quen SIZE: A3 SHEET: 1 OF 1 REV: B

CUSTOMER COPY