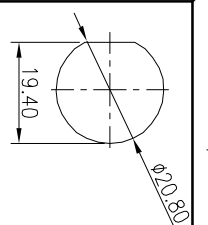
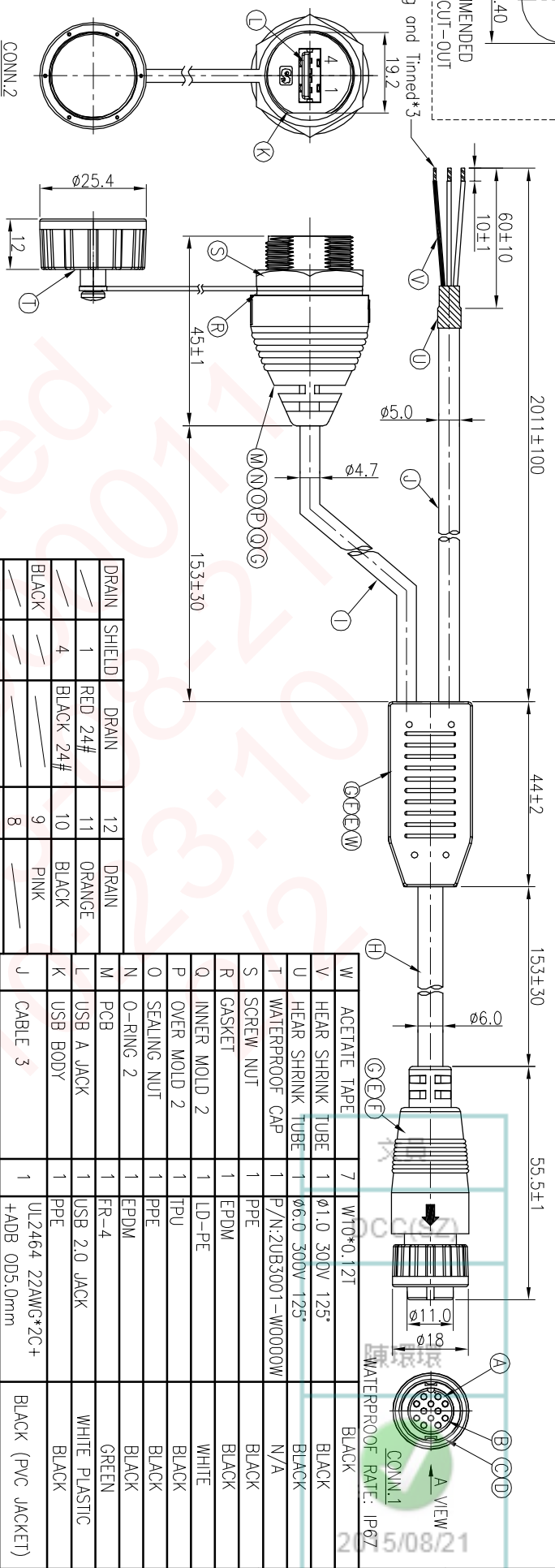


REV	ECN NO OR DESCRIPTION	REVISED	DATE
A	PDR NO.:S150617-11A	JF	2015.08.18



RECOMMENDED
PANEL CUT-OUT
Twisting and Tinned*3



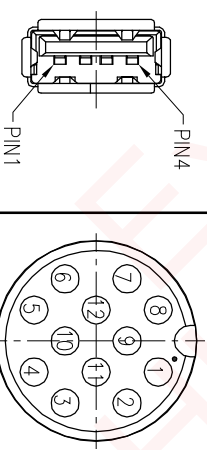
CONN.2
WATERPROOF RATE: IP67

NOTES:

1. WATERPROOF RATE: IP67
IP67: IMMERSED IN 1M WATER FOR 30 MINUTES
2. CURRENT RATING: 1A
3. OTHER GENERAL SPEC. TO REFER
USB SERIES & CIRCULAR SERIES SPEC".
4. TO CONFORM TO SINGATRON HAZARDOUS SUBSTANCE
FREE SPEC.
5. GREEN PRODUCT IDENTIFICATION LABEL ON
PACKAGING: **GREEN**
6. USB CONN. FOR PANEL THICKNESS Max.:2.5mm

DRAIN	SHIELD	DRAIN	DRAIN
1	RED 24#	11	ORANGE
4	BLACK 24#	10	BLACK
---	---	9	PINK
---	---	8	---
---	---	7	---
---	---	6	---
---	---	5	RED
2	WHITE 28#	4	YELLOW
3	GREEN 28#	3	GREEN
---	---	2	---
---	---	1	---

CABLE	CONN.2&WIRE	COLOR	CONN.1	WIRE	COLOR
1	CABLE 2	UL2725 28AWG*1P+24 +ADB 0D4.7mm	1	BLACK (PVC JACKET)	1
2	CABLE 3	UL2464 26AWG*2C+ +ADB 0D5.0mm	1	BLACK (PVC JACKET)	1
3	CABLE	UL2464 26AWG*10C+ AL+D(UV) 0D6.0	1	BLACK (PVC JACKET)	1
4	HEAT SHRINK TUBE	10 Ø1.5	1	BLACK	1
5	INNER MOLD	2 TPU	1	NATURAL	1
6	OVER MOLD	2 PVC	1	BLACK	1
7	O-RING	1 EPDM	1	BLACK	1
8	LOCK NUT	1 PA66+GF	1	BLACK	1
9	FEMALE PIN	12 Phosphor Bronze	1	6u" GOLD PLATING OVER NICKEL PLATING	1
10	BODY	1 PA66+GF	1	BLACK	1
11	DESCRIPTION	MATERIAL	PLATING & COLOR		



Pin Assignments
Front View
PIN1
PIN4
2UB3001-W0510X

Pin Assignments
Front View
2CT3004-W12200

DECIMALS:	ANGLES:	TITLE	CIRCULAR STANDARD SIZE (180° IP67) FEMALE CONN. FEMALE 12 PIN/LOCK TYPE
X :±0.5	X :±2°	DWN	JF
XX :±0.3	XX :±1°	CHKD	Yang
XXX :±0.2		APVD	Horlen

UNLESS OTHERWISE SPECIFIED TOLERANCES

Singatron Enterprise Co., Ltd.
信營企業股份有限公司

PART NO. 2CT3004-J12223H

SCALE 2:1 UNIT: mm

SHEET: 1 OF 1 REV: A

CUSTOMER COPY