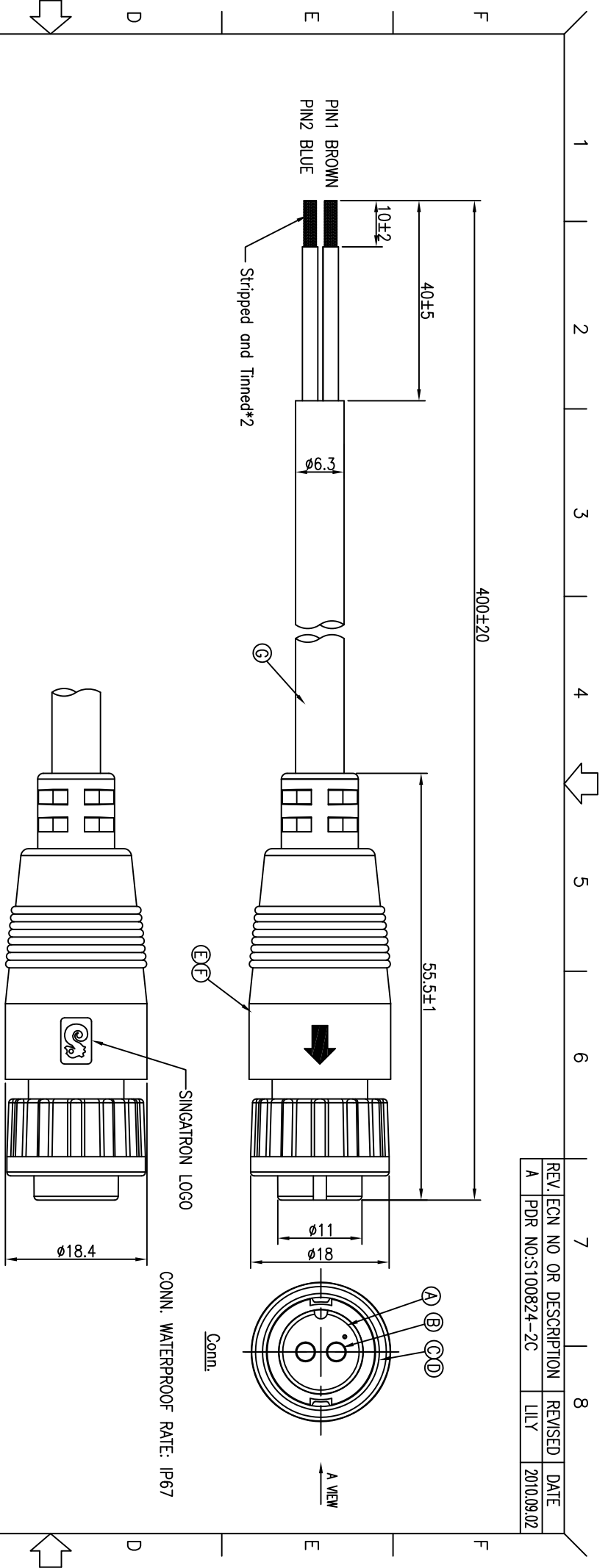
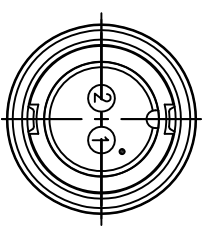


REV. A	ECN NO. PDR NO.:S100824-2C	OR DESCRIPTION LILY	REVISION DATE
			2010.09.02



BLUE	2
BROWN	1
WIRE COLOR	CONN.
PIN OUT	



Pin Assignments  
Front View

- NOTES:
1. WATERPROOF RATE: IP67
  2. CURRENT RATING: 10A
  3. SPECIFICATIONS: SEE "CIRCULAR SERIES SPECIFICATIONS".
  4. TO CONFORM TO SINGATRON HAZARDOUS SUBSTANCE FREE SPEC.
  5. GREEN PRODUCT IDENTIFICATION LABEL ON PACKAGING:

G	CABLE	1	60245 IEC 57(YZW) 2*0.75mm <sup>2</sup> OD= $\phi 6.3$	BLACK
F	INNER MOLD	1	TPU	NATURAL
E	OVER MOLD	1	PVC	BLACK
D	O-RING	1	EPDM	BLACK
C	LOCK NUT	1	NYLON+33%GF	BLACK
B	FEMALE PIN	2	Phosphor Bronze Alloy	(1~3)" GOLD PLATED OVER NICKEL PLATING
A	BODY	1	NYLON+33%GF	BLACK
NO	DESCRIPTION	QTY	MATERIAL	PLATING & COLOR

UNLESS OTHERWISE SPECIFIED TOLERANCES

DECIMALS: ANGLES: TITLE: SINGATRON Enterprise Co., Ltd. 信音企业股份有限公司

CIRCULAR STANDARD SIZE (IP67) FEMALE CONN. FEMALE 2PIN(10A) LOCK TYPE

DWN LILY PART NO. 2CT13004-W02423

CHKD Steve SCALE 2:1 UNIT: mm

APVD Max SIZE: A3 SHEET: 1 OF 1 REV: A

CUSTOMER COPY

