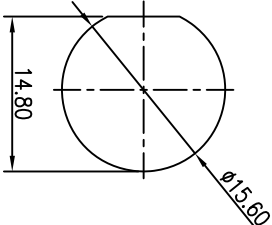
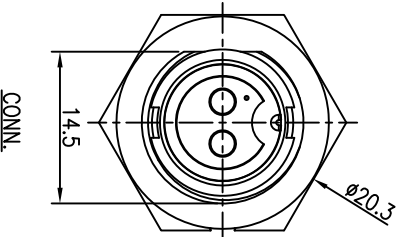
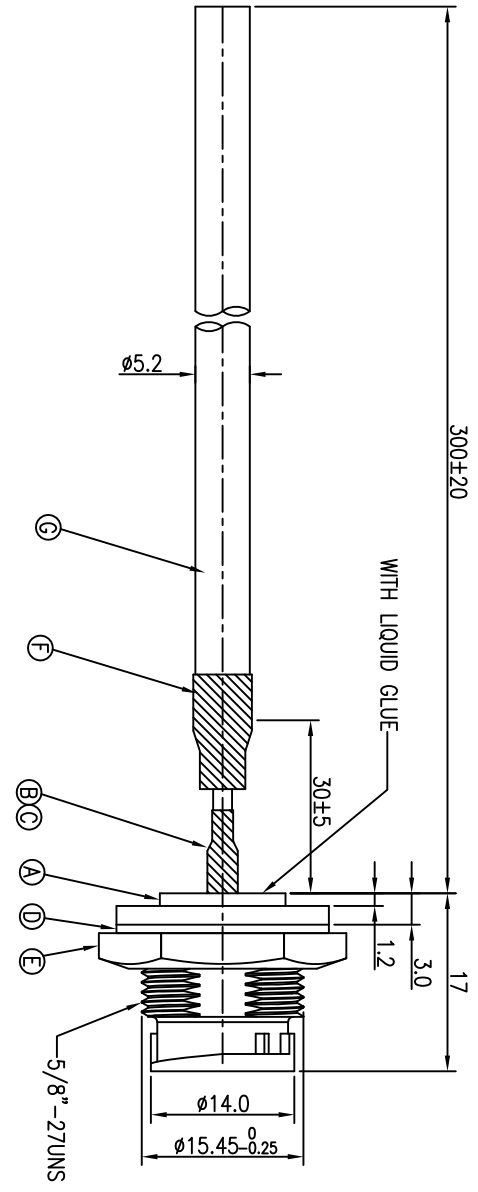


REV.	ECN NO. OR DESCRIPTION	REVISED	DATE
A	PDR NO.:S101116-9A	Shown	2011.02.23

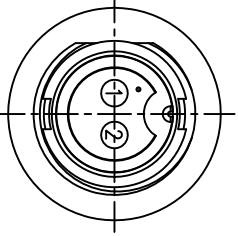


PANEL CUT-OUT
RECOMMENDED



BLACK	2
RED	1
WIRE COLOR	CONN.
PIN OUT	

CONN.



PIN ASSIGNMENTS
FRONT VIEW

- NOTES:
1. WATERPROOF RATE: IP67
IP67: IMMersed IN 1M WATER FOR 30 MINUTES
 2. CURRENT RATING: 10A
 3. SPECIFICATIONS:SEE "CIRCULAR SERIES SPECIFICATIONS"
 4. TO CONFORM TO SINGATRON HAZARDOUS SUBSTANCE FREE SPEC.
 5. GREEN PRODUCT IDENTIFICATION LABEL ON PACKAGING:
 6. FOR PANEL THICKNESS MAX OF 3.5mm

NO	DESCRIPTION	QTY	MATERIAL	PLATING & COLOR
A	BODY	1	NYLON+33%GF	BLACK
B	FEMALE PIN	2	Phosphor Bronze	6u" GOLD PLATING OVER NICKEL PLATING
C	HEAT SHRINK TUBE	2	125' 300V L=15mm	BLACK
D	GASKET	1	EPDM	BLACK
E	NUT	1	NYLON+33%GF	BLACK
F	HEAT SHRINK TUBE	1	125' 300V L=20mm	BLACK
G	CABLE	1	UL2464 18AWG*2C+T UV RESISTANT OD=5.2	BLACK

UNLESS OTHERWISE SPECIFIED TOLERANCES

DECIMALS:	ANGLES:
X :±0.5	X :±2°
X.X :±0.3	X.X :±1'
X.XX :±0.2	

Singatron Enterprise Co., Ltd.
信管企業股份有限公司
CIRCULAR STANDARD SIZE (SOLDER/LOCK TYPE)
MALE CONN. FEMALE PIN (10A)

DWN	Shawn	PART NO.2CT3014-W02401	SCALE 2:1	UNIT: mm	REV: A
CHKD	Steve		SIZE: A3	SHEET:1 OF 1	
APVD	Max				

CUSTOMER COPY

1 2 3 4 5 6 7 8