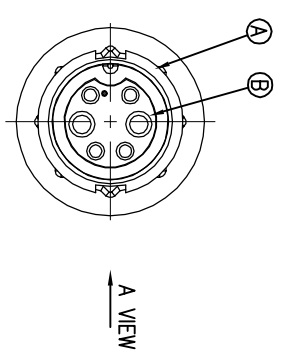
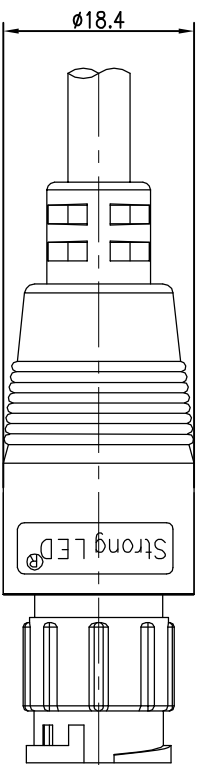
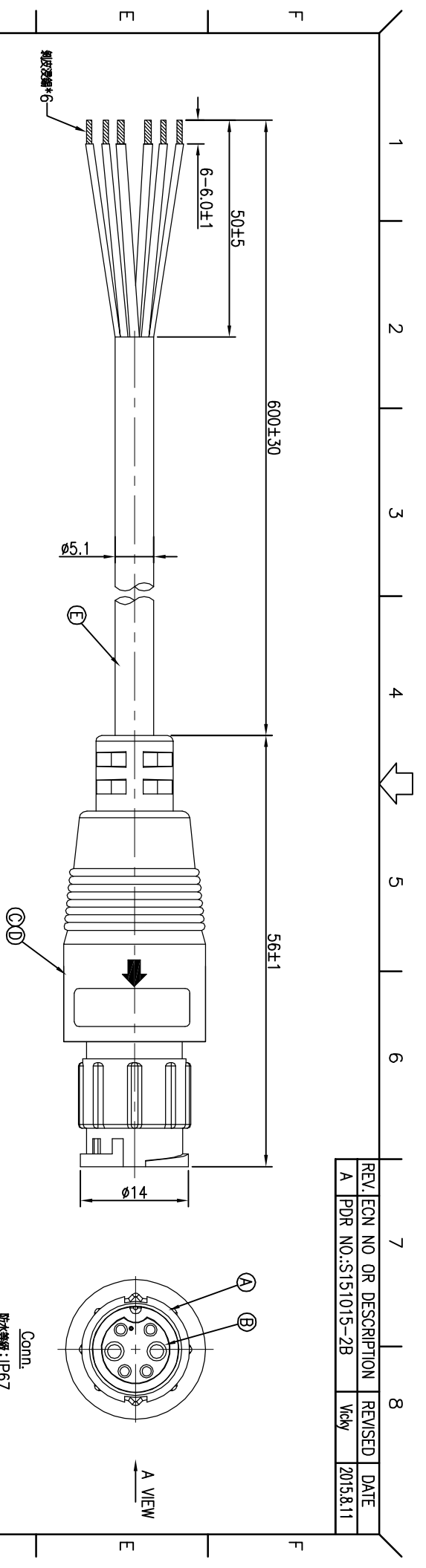


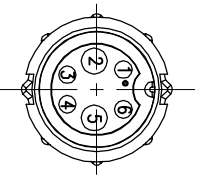
REV.	ECN NO OR DESCRIPTION	REVISED	DATE
A	PDR NO.:S151015-2B	Vicky	2015.8.11



客户料号: YF01-LM-24A-6P-XH/B/600-50/6-PUR

颜色	数量
黑 (24AWG)	6
灰 (22AWG)	5
蓝 (24AWG)	4
绿 (24AWG)	3
白 (22AWG)	2
红 (24AWG)	1
芯線颜色	CONN.

PIN OUT



- 注意:
1. 防水等级: IP67
 2. IP67: 切邊在1米距離水深30分鐘;
 3. 额定電壓: 5A+10A(僅限採購);
 4. 规格符合圖形標樣品采购标准;
 5. 符合庫存管理要求;
 6. 黄色產品包裝標識:

NO	產品描述	材質	數量	備註 & 顏色
E	線材	22AWG*2C+24AWG*2P OD5.1	1	BLACK (PU JACKET)
D	內襯	TPU	1	NATURAL
C	外襯	PVC	1	BLACK
B	端子	Phosphor Bronze	6	1~3µ" GOLD PLATING OVER NICKEL PLATING
A	膠芯	PA66+30%GF	1	BLACK COLOR

UNLESS OTHERWISE SPECIFIED TOLERANCES

Singatron Enterprise Co., Ltd.
信亨企業股份有限公司

TITLE CIRCULAR STANDARD SIZE (IP67)
MALE CONN. FEMALE 2+4PIN(10A+5A) LOCK TYPE

DECIMALS: ANGLES: DIM Vicky PRT NO. 2CT9030-W06829H
X.XX :±0.5 X :±2 CHKD Harlen SCALE 2:1 UNIT: mm
X.XX :±0.2 X.XX :±1' APVD Steve SIZE: A3 SHEET: 1 OF 1 REV: A

CUSTOMER COPY