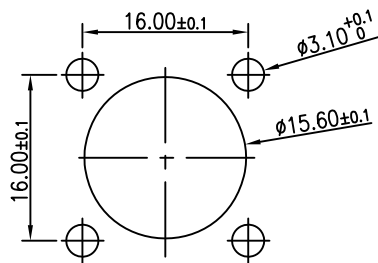
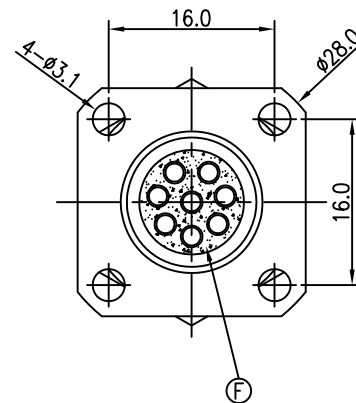
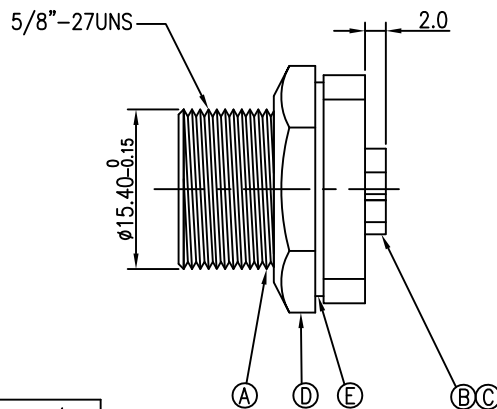
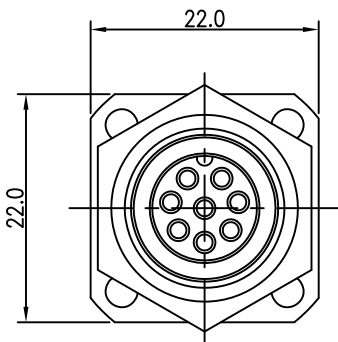
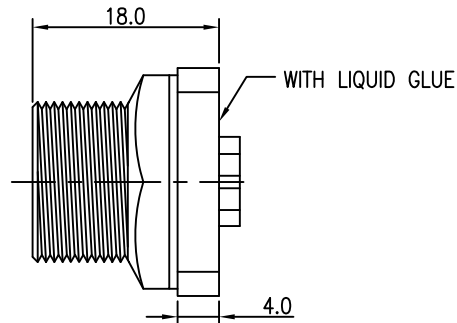


REV.	ECN NO OR DESCRIPTION	REVISED	DATE
A	PDR NO.:C120430-8F	Shawn	2014.03.24



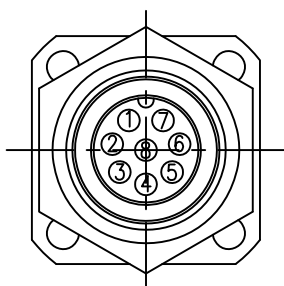
RECOMMENDED PANEL CUT-OUT



Customer P/N	Singatron P/N
EC09H00020800	2CT3501-W08300H

NOTES:

1. WATERPROOF RATE: IP66/IP67
2. ELECTRICAL CHARACTERISTICS
TEMPERATURE RANGE: -40°C TO +100°C
CURRENT RATING: 5A
DIELECTRIC WITHSTANDING VOLTAGE: 500V AC FOR ONE MINUTE
3. SPECIFICATIONS: SEE "CIRCULAR SERIES SPECIFICATIONS".
4. TO CONFORM TO ROHS REQUIREMENT AND REACH REGULATION
5. GREEN PRODUCT IDENTIFICATION LABEL ON PACKAGING: G.P. PASS
6. FOR PANEL THICKNESS MAX OF 4.4mm
7. NON-HUMAN FACTORS CASE SERVICE LIFE IS 5 YEARS
8. TORQUE FORCE: 6~8 kgf.cm



PIN ASSIGNMENTS
FRONT VIEW

F	LIQUID GLUE	1	N/A	BLACK
E	GASKET	1	SILICON	BLACK
D	NUT	1	C3604	NICKEL PLATING 60u"
C	MALE PIN	8	BRASS(HBI59-1.5B)	6u" GOLD PLATING OVER NICKEL PLATING
B	BODY	1	PA66+30%GF 94V-0	BLACK
A	HOUSING	1	C3604	NICKEL PLATING 60u"
NO	DESCRIPTION	QTY	MATERIAL	PLATING & COLOR

UNLESS OTHERWISE SPECIFIED TOLERANCES

Singatron Enterprise Co., Ltd.
信音企業股份有限公司

DECIMALS: X :±0.5
X.X :±0.3
X.XX :±0.2

ANGLES: X :±2°
X.X :±1°

TITLE	CIRCULAR STANDARD SHIELDED PANEL SCREW 8PIN M CONN M PIN		
DWN	Shawn	PART NO.2CT3501-W08300H	
CHKD	Harlen	SCALE 2:1	UNIT: mm
APVD	Quan	SIZE: A3	SHEET: 1 OF 1

CUSTOMER COPY