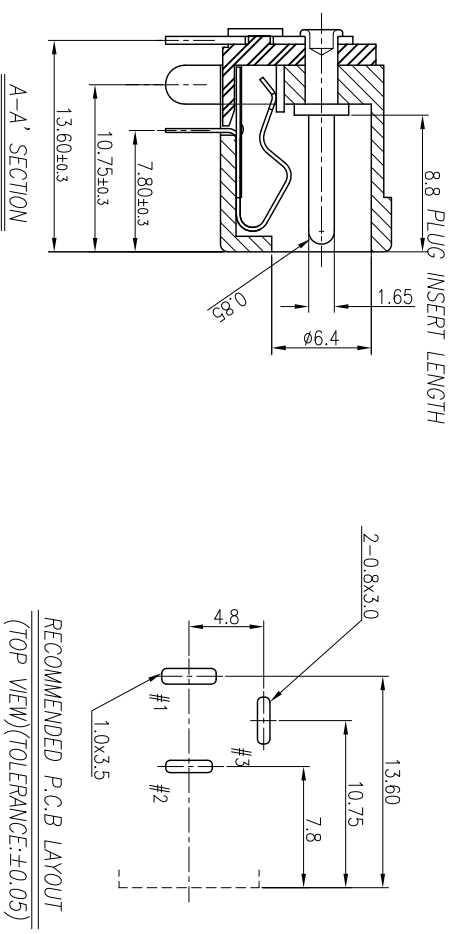
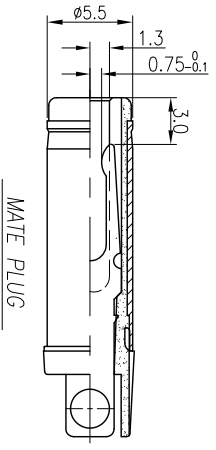
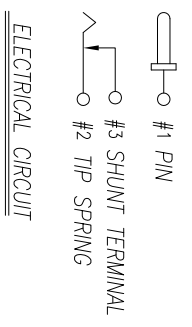


**SPECIFICATIONS:**

- 1. ELECTRICAL CHARACTERISTICS:**  
 1-1. RATING: DC 20V, 4A.  
 1-2. CONTACT RESISTANCE:  
 30 MILLIOHMS Max. FOR INITIAL,  
 50 MILLIOHMS Max. AFTER 5000 CYCLES.  
 1-3. INSULATION RESISTANCE: 100 MEGAOHMS Min.  
 BY 500V DC AFTER 1 MINUTE.  
 1-4. DIELECTRIC WITHSTANDING VOLTAGE: 500V RMS AFTER 1 MINUTE.
- 2. MECHANICAL CHARACTERISTICS:**  
 2-1. INSERTION FORCE : 0.2~2.5 KGf  
 2-2. WITHDRAWAL FORCE : 0.2~3.0 KGf
- 3. LIFE TEST: 5,000 CYCLES MIN.**
- 4. OTHER GENERAL SPEC. TO REFER "2DC0005 SERIES SPEC".**
- 5. TO CONFORM TO SINGATRON HAZARDOUS SUBSTANCE FREE SPEC.**
- 6. GREEN PRODUCT IDENTIFICATION MARK ON JACK: ♻️**
- 7. GREEN PRODUCT IDENTIFICATION LABEL ON PACKAGING: **G.P. PASS****
- 8. FOR WAVE SOLDERING LEAD-FREE PROCESS.**



**RECOMMENDED P.C.B LAYOUT  
(TOP VIEW)(TOLERANCE:±0.05)**



NO	DESCRIPTION	QTY	MATERIAL	PLATING & COLOR
F	PIN	1	BRASS	NICKEL PLATING
E	TERMINAL	1	COPPER ALLOY 0.5T	SILVER PLATING
D	SHUNT TERMINAL	1	COPPER ALLOY 0.5T	SILVER PLATING
C	TIP SPRING	1	COPPER ALLOY 0.25T	SILVER PLATING
B	COVER	1	HI-THERMAL PLASTIC	BLACK COLOR
A	BODY	1	UL94V-0	

UNLESS OTHERWISE SPECIFIED TOLERANCES

Singatron Enterprise Co., Ltd.  
 信登企業股份有限公司

DECIMALS:	ANGLES:	TITLE
X : ±0.5	X : ±2°	DC POWER JACK
X.X : ±0.3	X.X : ±1°	DWN Longjing 13/7/23
X.XX : ±0.2		CHKD zzz 13/7/23
		APVD Use 13/7/23

PART NO. 2DC-0005-Q21H  
 SCALE 3:1  
 UNIT: mm  
 SHEET: 10F1  
 REV: A

CUSTOMER COPY