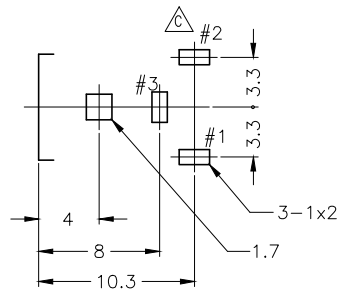
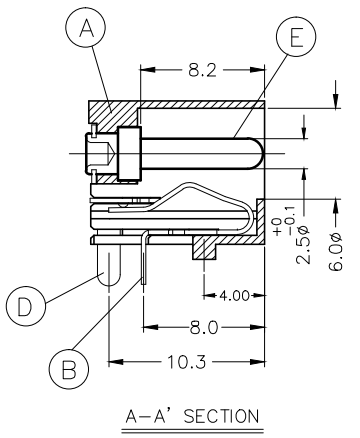
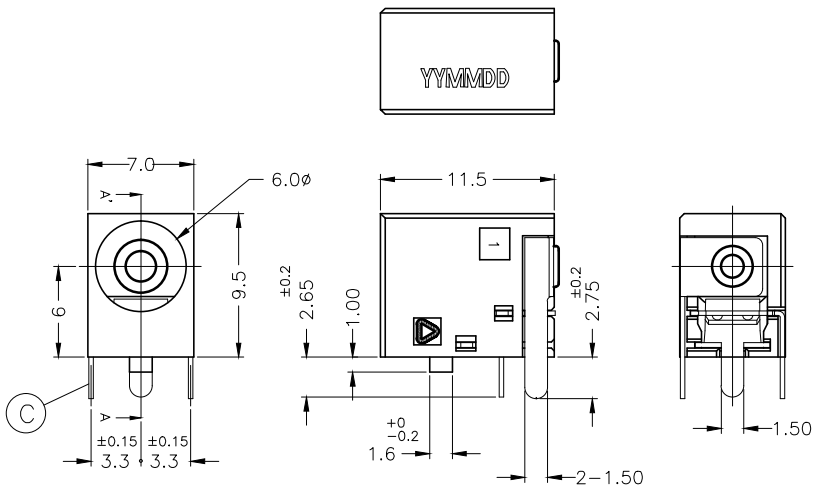
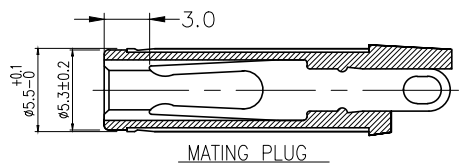
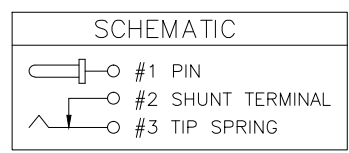


REV.	ECN NO. OR DESCRIPTION	REVISED	DATE
A	PDR NO: T070725-1	EVEN	2007.8.2
B	ECN NO: S090111	Swina	2009.01.21
C	ECN NO: S160817-C	YUREN	2016.10.14

- SPECIFICATIONS:**
- RATING: DC 24V 4A
 - INSERTION FORCE: 0.4KG-3.0KG
WITHDRAWAL FORCE: 0.4KG-3.0KG
 - INSULATION RESISTANCE BETWEEN ANY ADJACENT TERMINALS SHALL NOT BE LESS THAN 100 MEGOHMS BY 500 VOLTS MEGGER.
 - JACK SHALL WITHSTAND 250 VOLTS BETWEEN ANY ADJACENT TERMINAL FOR ONE MINUTE.
 - CONTACT RESISTANCE SHALL NOT EXCEED 0.03 OHMS.
 - JACK SHALL WITHSTAND 5,000 CYCLES OF INSERTION AND WITHDRAWAL WITH TESTING PLUG, AND CONTACT RESISTANCE SHALL NOT EXCEED 0.1 OHMS.
 - MEASURING CONDITION:
TEMPERATURE: FROM 5°C TO 35°C.
RELATIVE HUMIDITY: FROM 40% TO 85%
 - ENVIRONMENTAL SPECIFICATIONS:
 - HUMIDITY TEST: HUMIDITY 90% TO 95% TEMPERATURE 40°C ± 2°C FOR 96 HOURS.
 - HEAT TEST: TEMPERATURE 70°C ± 2°C (HUMIDITY BELOW 50%) FOR 96 HOURS.
 - COLD TEST: TEMPERATURE -40°C ± 2°C FOR 96 HOURS.
 - SOLDERABILITY TEST: THE TERMINATION IS AT LEAST 95% COVERED BY A CONTINUOUS NEW SOLDER COATING.
TEST CONDITION: DIP IN MOLTEN SOLDER FOR 5 Sec. AT 245±5°C (TERMINATION SHALL BE IMMERSED IN FLUX BEFORE TEST)
 - TO CONFORM TO SINGATRON HAZARDOUS SUBSTANCE FREE SPEC.
 - GREEN PRODUCT IDENTIFICATION MARK ON JACK:
 - GREEN PRODUCT IDENTIFICATION LABEL ON PACKAGING: G.P. PASS
 - SOLDER HEAT RESISTANCE : 260°C 10 SECS.
 - PACKAGING: TAPE & REEL



Recommended PCB Layout
<TOP VIEW> TOLERANCE: ±0.05



NO	DESCRIPTION	QTY	MATERIAL	PLATING & COLOR
E	PIN	1	COPPER ALLOY(Pb-free)	Ni 60u" Min
D	TERMINAL	1	BRASS STRIP 0.3t	Ag 20u" Min
C	SHUNT TERMINAL	1	BRASS STRIP 0.3t	Ag 20u" Min
B	TIP SPRING	1	COPPER ALLOY 0.3t	Ag 20u" Min
A	BODY	1	HIGH TEMP. THERMOPLASTIC UL 94V-0	BLACK COLOR
UNLESS OTHERWISE SPECIFIED TOLERANCES		Singatron Enterprise Co., Ltd. 信音企業股份有限公司		
DECIMALS:		TITLE		
x	:±0.5	DC POWER JACK		
X.X	:±0.3	DWN YUREN PART NO. 2DC-0006-B05		
X.XX	:±0.2	CHKD	CERRY	SCALE:4:1 UNIT: MM
		APVD	LIAO	SIZE: A3 SHEET:1 OF 1 REV:C
CUSTOMER COPY				