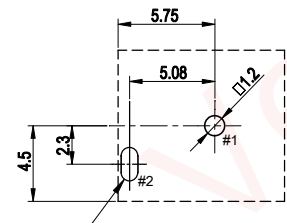
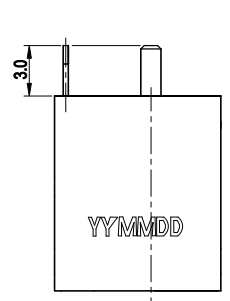
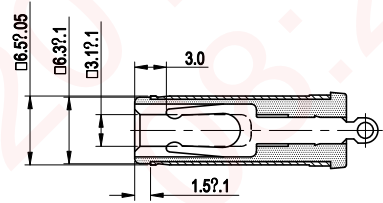
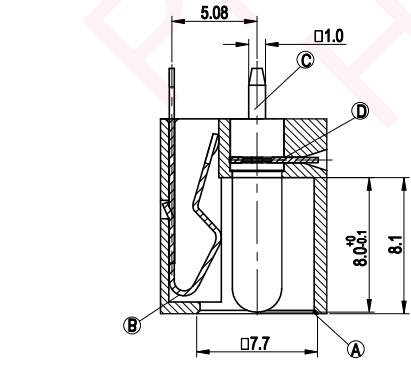
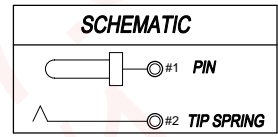
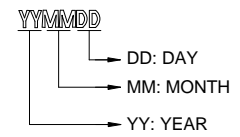
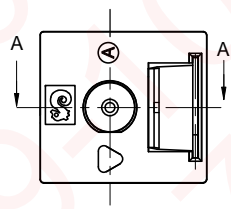
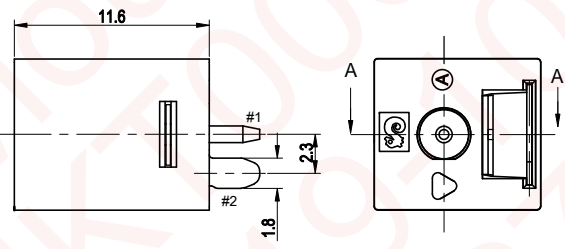
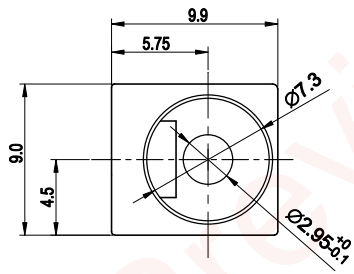


REV.	ECN NO OR DESCRIPTION	REVISED	DATE
A	PDR NO.T110401-1A	YANG	2011.06.07



RECOMMEND PCB LAYOUT
TOP VIEW (TOLERANCE:±0.05)

- SPECIFICATIONS:
- ELECTRICAL CHARACTERISTICS:
 - RATING:DC 20V 8A
 - CONTACT RESISTANCE: 30m MAX.(INITIAL)
 - DIELECTRIC WITHSTANDING VOLTAGE: 500V AC FOR ONE MINUTE.
 - INSULATION RESISTANCE: 100M MIN.(MEASURED BY 500 VDC)
 - MECHANICAL CHARACTERISTICS:
 - INSERTION FORCE : 3.0 KGMAX.
 - WITHDRAWAL FORCE : 0.3~3.0 KG
 - LIFE TEST: 5,000 CYCLES MIN.
 - OTHER GENERAL SPEC. TO REFER "2DC-0238-R07H SPEC".
 - TO CONFORM TO SINGATRON HAZARDOUS SUBSTANCE FREE SPEC.
 - GREEN PRODUCT IDENTIFICATION MARK ON JACK:
 - GREEN PRODUCT IDENTIFICATION LABEL ON PACKAGING:
 - FOR WAVE SOLDERING LEAD-FREE PROCESS.
 - PRINTED DATE CODE" YYMMDD" OF CONNECTOR.



MATING PULG

D	TERMINAL	1	STAINLESS 0.3T	N/A
C	PIN	1	BRASS BAR	GOLD FLASH OVER Ni 50u"
B	TIP SPRING	1	COPPER ALLOY 0.3T	Ag 20u" OVER Ni 60u"
A	BODY	1	HIGH TEMP. THERMOPLASTIC UL94V-0	BLACK
NO	DESCRIPTION	QTY	MATERIAL	PLATING & COLOR

UNLESS OTHERWISE SPECIFIED TOLERANCES		Singatron Enterprise Co., Ltd. 信音企業股份有限公司	
DECIMALS:	ANGLES:	TITLE	DC POWER JACK
X :±.5	X :??	DWN YANG	PART NO.2DC-0238-R07H
X.X :±.3	X.X :??	CHKD Sky	SCALE:4:1 UNIT: mm
X.XX :±.2		APVD Lussen	SIZE: A3 SHEET:1 OF 1 REV:A
CUSTOMER COPY			