

REV	ECN NO OR DESCRIPTION	REVISED	DATE
A	PDR NO.: T140226-1A	Jie	2014.05.08

SPECIFICATIONS:

1. ELECTRICAL CHARACTERISTICS:

- 1-1. RATING: 20V 7A
- 1-2. CONTACT RESISTANCE: 30mΩ MAX. (INITIAL)
- 1-3. DIELECTRIC WITHSTANDING VOLTAGE: 500V AC FOR ONE MINUTE.
- 1-4. INSULATION RESISTANCE: 100mΩ MIN. MEASURED BY 500V DC.


2. MECHANICAL CHARACTERISTICS:


- 2-1. INSERTION FORCE: 0.4-3.0Kgf
- 2-2. WITHDRAWAL FORCE: 0.4-3.0Kgf

3. LIFE TEST: 5000 CYCLES MIN.

4. OTHER GENERAL SPEC. TO REFER "2DC-G026 SERIES SPEC".

5. TO CONFORM TO SINGATRON HAZARDOUS SUBSTANCE FREE SPEC.

6. HALOGEN FREE PRODUCT IDENTIFICATION MARK ON JACK: 

7. HALOGEN FREE PRODUCT IDENTIFICATION LABEL ON PACKAGING: 

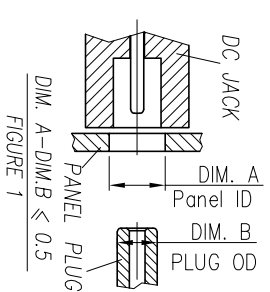
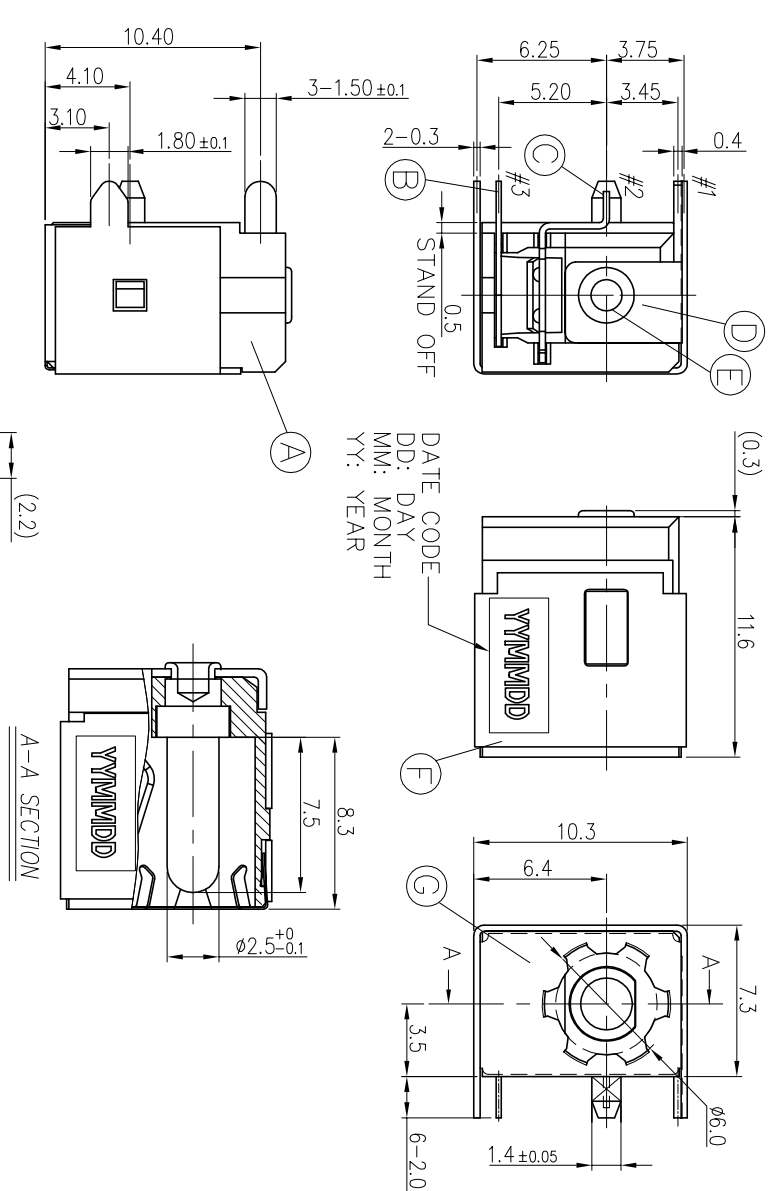
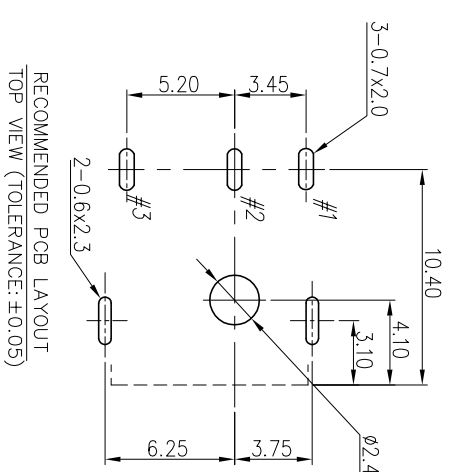
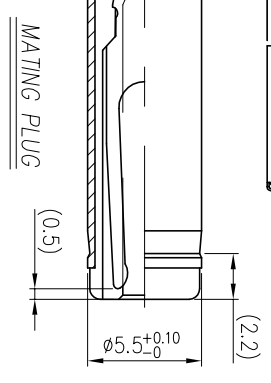
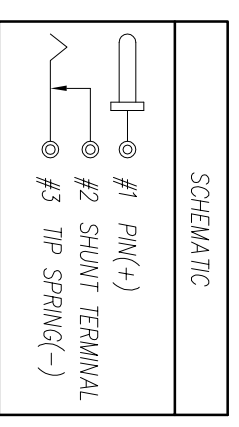


FIGURE 1



NO	DESCRIPTION	QTY	MATERIAL	PLATING & COLOR
G	GROUNDING SPRING	1	STAINLESS 0.1T	N/A
F	SHIELDING	1	BRASS STRIP 0.3T	Ni 60μ" Min.
E	PIN	1	BRASS BAR	Ni 60μ" Min Over Cu80μ" Min
D	TERMINAL	1	BRASS STRIP 0.4T	Ni 60μ" Min.
C	SHUNT TERMINAL	1	BRASS STRIP 0.3T	Ag 20μ" Min Over Ni 20μ" Min
B	TIP SPRING	1	COPPER ALLOY 0.25T	Ag 20μ" Min Over Ni 50μ" Min
A	BODY	1	UL 94V-0	BLACK

UNLESS OTHERWISE SPECIFIED TOLERANCES

Singatron Enterprise Co., Ltd.
信登企業股份有限公司

DC POWER JACK

TITLE	DC POWER JACK
DWM	Jie
CHKD	Sky
APVD	Lussen
PART NO.	2DC-G026-B41F
SCALE	1:1
UNIT	mm
SHEET	1 OF 1
REV	A

CUSTOMER COPY