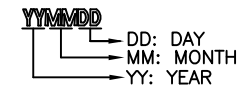


REV.	ECN NO OR DESCRIPTION	REVISED	DATE
D	ECN NO: S081005	BOYE	2008.11.24

SPECIFICATIONS:

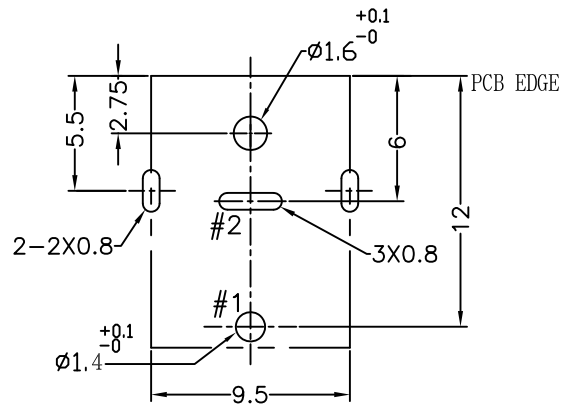
- 1.RATING: DC 20V 10A 44uF
WITHDRAWAL FORCE: 1Kg~3.0Kg
- 2.INSERTION FORCE: 3.0Kg MAX.
- 3.INSULATION RESISTANCE BETWEEN ANY ADJACENT TERMINALS SHALL NOT BE LESS THAN 100 MEGOHMS BY 500 VOLTS MEGGER.
- 4.JACK SHALL WITHSTAND 250 VOLTS BETWEEN ANY ADJACENT TERMINAL FOR ONE MINUTE.
- 5.CONTACT RESISTANCE (INITIAL) SHALL NOT EXCEED 30mΩ
CONTACT RESISTANCE (AFTER LIFE TEST) SHALL NOT EXCEED 50mΩ
ABOVE MUST USE 2DP-G213-BG6 PLUG
- 6.MEASURING CONDITION:
TEMPERATURE: FROM 5°C TO 35°C.
RELATIVE HUMIDITY: FROM 40% TO 85%.
- 7.ENVIRONMENTAL SPECIFICATIONS:
 - 7.1 HUMIDITY TEST: HUMIDITY 90% TO 95% TEMPERATURE 40°C ±2°C FOR 96 HOURS.
 - 7.2 HEAT TEST: TEMPERATURE 70°C ± 2°C (HUMIDITY BELOW 50%) FOR 96 HOURS.
 - 7.3 COLD TEST: TEMPERATURE -40°C ± 2°C FOR 96 HOURS.
- 8.MATING PLUG : SINGATRON'S P/N : 2DP-G213-B04(PLUG SET)
- 9.PACKING: TAPE&REEL
- 10.PRINTED DATE CODE **YYMMDD** ON TOP OF CONNECTOR.



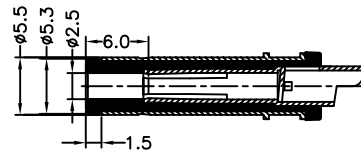
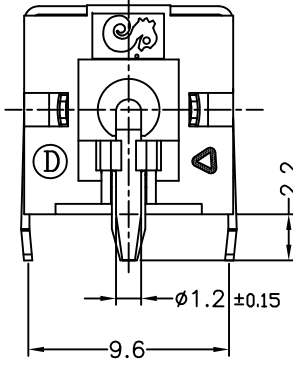
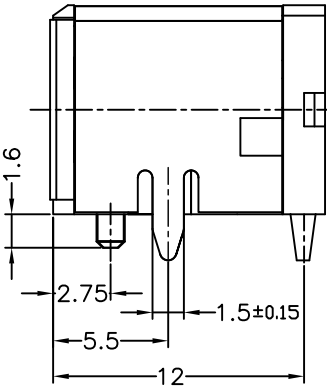
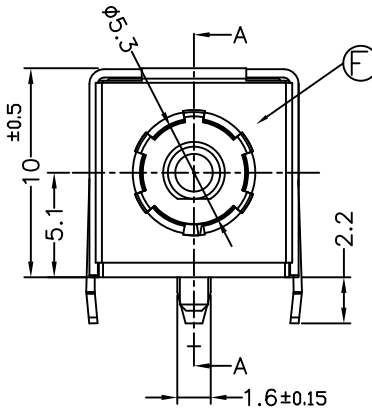
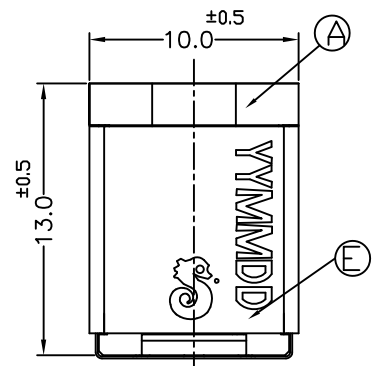
- 11.RATING:DC 20V 10A 44uF DEPEND ON MATING PLUG DETAIL TYPE
- 12.WEIGHT:2.9 g/pcs
- 13.TO CONFORM TO THE SINGATRON HSF SPECIFICATION
- 14.GREEN PRODUCT IDENTIFICATION MARK ON JACK:
- 15.GREEN PRODUCT IDENTIFICATION LABEL ON PACKING: **G.P. PASS**
- 16.FOR LEAD-FREE PROCESS.

F	GROUND	1	SUS 304 0.15t	N/A
E	SHELL	1	SPCC-SD 0.4t	NI 60u" Min.(N4)
D	STOPPER	1	HIGH TEMP.THERMOPLASTIC UL94V-0	BLACK
C	PIN	1	HBI59-1.5B	Ag 20u" Min.
B	SPRING	1	COPPER ALLOY 0.3t	Sn 60u"Min,Ni 60u"Min.
A	BODY	1	HIGH TEMP.THERMOPLASTIC UL94V-0	BLACK
NO	DESCRIPTION	QTY	MATERIAL	PLATING & COLOR

UNLESS OTHERWISE SPECIFIED TOLERANCES		Singatron Enterprise Co., Ltd. 信音企業股份有限公司	
DECIMALS:	ANGLES:	TITLE	
X : ±0.5	X : ±2°	DWN	BOYE 2008.11.24
X.X : ±0.3	X.X : ±1°	CHKD	2008.11.28
X.XX : ±0.2		APVD	MAX
		PART NO. 2DC-G213-B13 SCALE: 4:1 UNIT: mm SIZE: A3 SHEET: 1 OF 1 REV: D CUSTOMER COPY	



RECOMMENDED P.C.B LAYOUT
TOP VIEW (TOLERANCE ±0.05)



ø5.5 PULG TYPE(2DP-G213-B04)
1.RATING: DC 20V 10A 44uF

