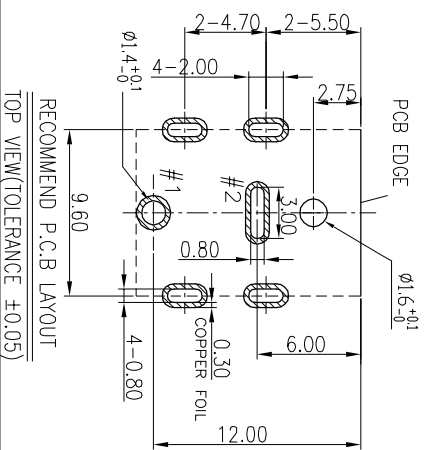
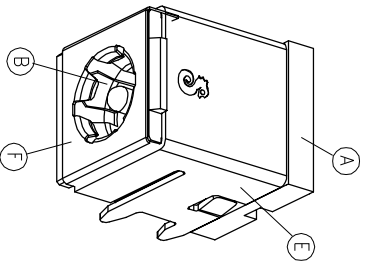
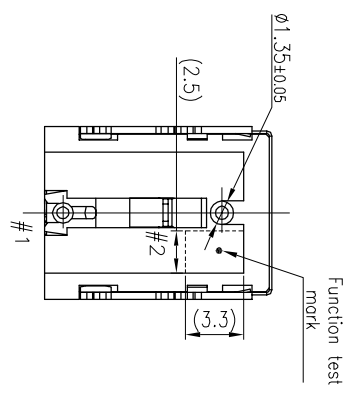
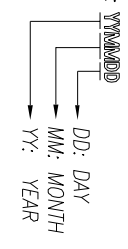
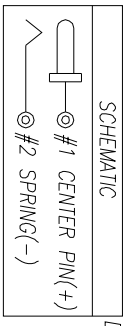
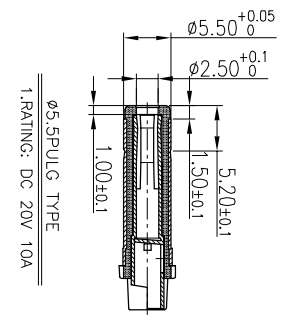
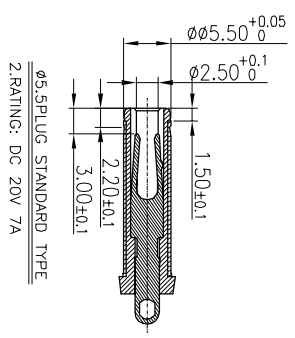
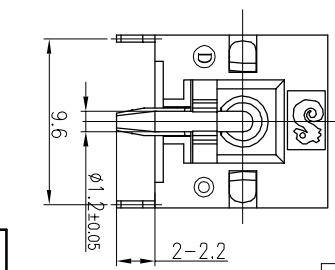
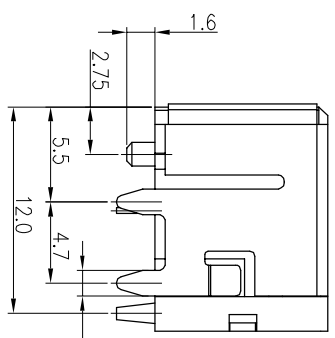
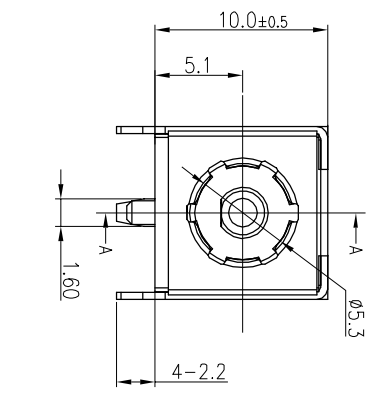
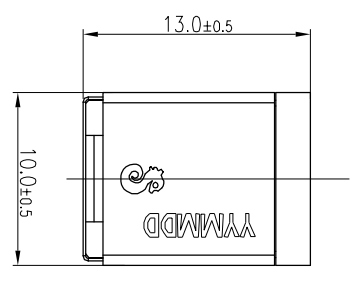
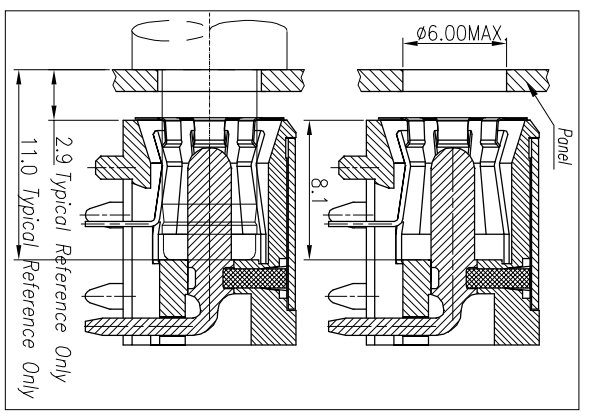


REV.	ECN NO OR DESCRIPTION	REVISED	DATE
A	PDR NO: S161013-1A	Springwu	2016.12.09

- SPECIFICATIONS:**
- ELECTRICAL CHARACTERISTICS:**
 - 1-1. RATING: 20V 7A or 20V 10A.
 - 1-2. CONTACT RESISTANCE: 30mΩ MAX.
 - 1-3. DIELECTRIC WITHSTANDING VOLTAGE: 500V AC FOR ONE MINUTE.
 - 1-4. INSULATION RESISTANCE: 100MΩ MIN. MEASURED BY 500 VDC
 - MECHANICAL CHARACTERISTICS:**
 - 2-1. INSERTION FORCE : 3.5 kg Max.
 - 2-2. WITHDRAWAL FORCE : 0.5~3.5kg.
 3. LIFE TEST: 5,000 CYCLES MIN.
 - 4 TO CONFORM TO SINGATRON HAZARDOUS SUBSTANCE FREE SPEC.
 5. OTHER GENERAL SPEC, PLEASE REFER TO "2DC-G213-B82F SPEC."
 6. HALOGEN FREE PRODUCT IDENTIFICATION MARK ON JACK:
 7. HALOGEN FREE PRODUCT IDENTIFICATION LABEL ON PACKAGING:
 8. FOR WAVE SOLDERING LEAD-FREE PROCESS.
 9. PRINTED DATE CODE "YMMDD" ON TOP OF CONNECTOR.



NO	DESCRIPTION	QTY	MATERIAL	PLATING & COLOR
F	GROUND	1	STAINLESS STEEL 0.15T	N/A
E	SHELL	1	SPOC 0.4T	Ni 60u" Min, Cu120u" Min.
D	STOPPER	1	HIGH TEMP.THERMOPLASTIC UL94V-0	BLACK
C	PIN	1	BRASS	GOLD FLASH OVER Ni 60u"
B	SPRING	1	PHOSPHOR BRONZE 0.3T	Tin 60u" Min OVER Ni 60u" Min
A	BODY	1	HIGH TEMP.THERMOPLASTIC UL94V-0	BLACK

UNLESS OTHERWISE SPECIFIED TOLERANCES

Singatron Enterprise Co., Ltd.
信晉企業股份有限公司

TITLE	DC POWER JACK
DWM	Springwu
CHKD	Sky
APVD	Lussen
PART NO.	2DC-G213-B82F
SCALE:	4:1
UNIT:	mm
SIZE:	A3
SHEET:	1 OF 3
REV:	A

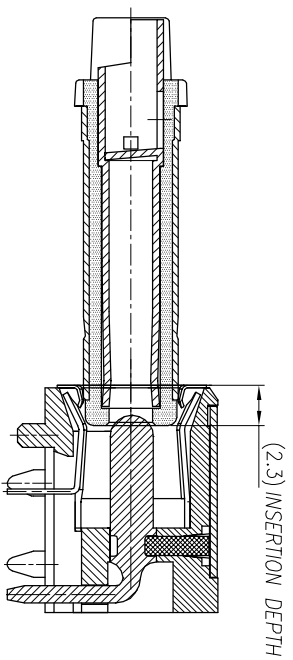
DECIMALS: ANGLES:

X : ±0.5 X : ±2°
X.X : ±0.3 X.X : ±1°
X.XX : ±0.2

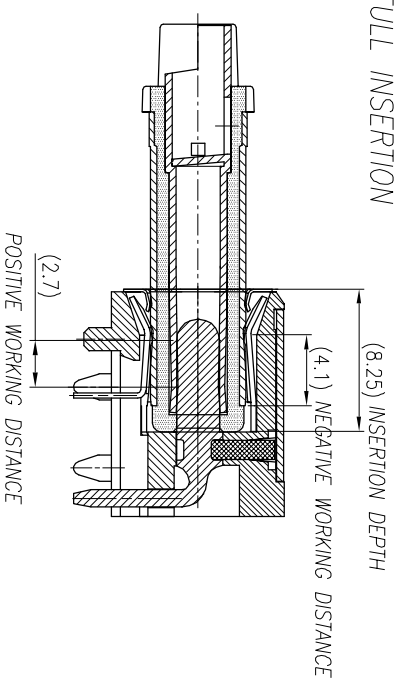
CUSTOMER COPY

REV:	ECN NO OR DESCRIPTION	REVISED	DATE
A	PDR NO.S161013-11A	Springwu	2016.12.09

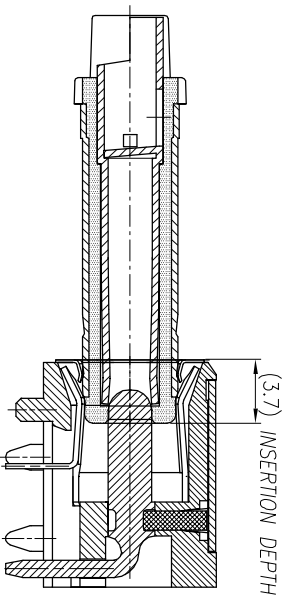
1. GROUNDING CONTACT FIRST



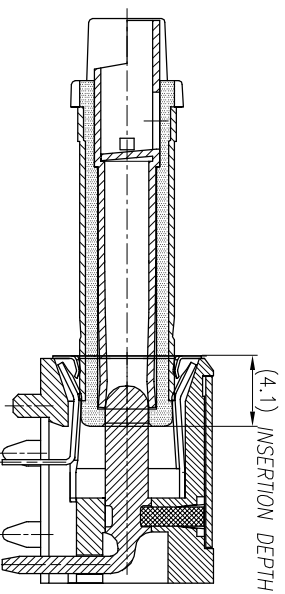
4. FULL INSERTION



2. NEGATIVE CONTACT



3. POSITIVE CONTACT

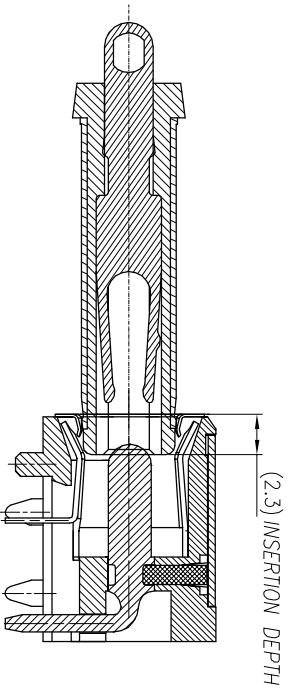


NO	DESCRIPTION	QTY	MATERIAL	PLATING & COLOR
UNLESS OTHERWISE SPECIFIED TOLERANCES				
 Singatron Enterprise Co., Ltd. 信音企業股份有限公司				
DC POWER JACK				
DECIMALS:	ANGLES:			
X :±0.5	X :±2°			
X.X :±0.3	X.X :±1°			
X.XX :±0.2				
TITLE				
DWN	Springwu	PART NO.	2DC-G213-B82F	
CHKD	Sky	SCALE:4:1	UNIT:	mm
APVD	Lussen	SIZE: A3	SHEET:2 OF 3	REV:4

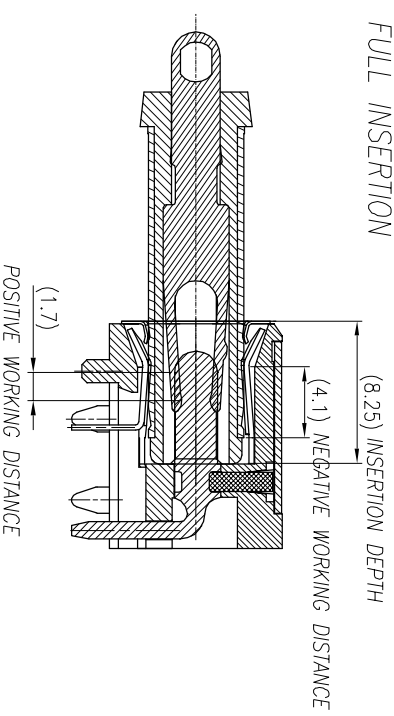
CUSTOMER COPY

REV.	ECN NO OR DESCRIPTION	REVISED	DATE
A	PDR NO.S161013-11A	Springwu	2016.12.09

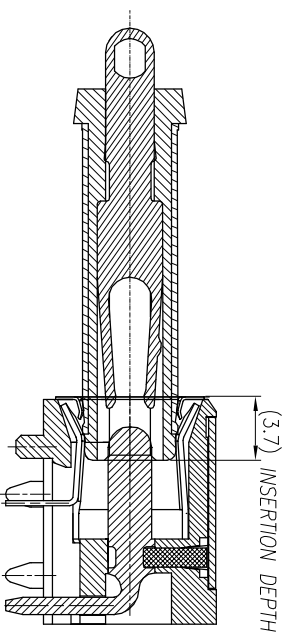
1. GROUNDING CONTACT FIRST



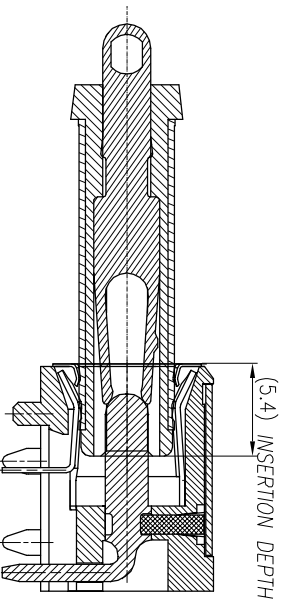
4. FULL INSERTION



2. NEGATIVE CONTACT



3. POSITIVE CONTACT



NO	DESCRIPTION	QTY	MATERIAL	PLATING & COLOR
UNLESS OTHERWISE SPECIFIED TOLERANCES				
DECIMALS:	ANGLES:			
X :±0.5	X :±2°			
X.X :±0.3	X.X :±1°			
X.XX :±0.2				
TITLE	DC POWER JACK			
DWN	Springwu	PART NO.	2DC-G213-B82F	
CHKD	Sky	SCALE:4:1	UNIT:	mm
APVD	Lussen	SIZE: A3	SHEET:3 OF 3	REV:4

 Singatron Enterprise Co., Ltd.
 信音企業股份有限公司

CUSTOMER COPY