

REV.	PDR NO OR DESCRIPTION	REVISED	DATE
A	PDR NO.:T230522-3A	JIE-FU	2023.08.07

SPECIFICATIONS:

1.ELECTRICAL CHARACTERISTICS:

- 1-1.CONTACT RESISTANCE:30mΩ MAX.(INITIAL)
- 1-2.DIELECTRIC WITHSTANDING VOLTAGE:250V AC FOR ONE MINUTE.
- 1-3.INSULATION RESISTANCE:100MΩ MIN. MEASURED BY 500V DC.

2.MECHANICAL CHARACTERISTICS:

- 2-1.INSERTION FORCE: 3.5Kgf Max.
- 2-2.WITHDRAWAL FORCE: 0.5Kgf~3.5Kgf.

3.LIFE TEST:5000 CYCLES MIN.

4.OTHER GENERAL SPEC. TO REFER "2DC-G213-B99F SPEC".

5.TO CONFORM TO SINGATRON HAZARDOUS SUBSTANCE FREE SPEC.

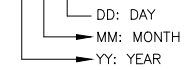
6.HALOGEN FREE PRODUCT IDENTIFICATION MARK ON JACK:

7.HALOGEN FREE PRODUCT IDENTIFICATION LABEL ON PACKAGING:

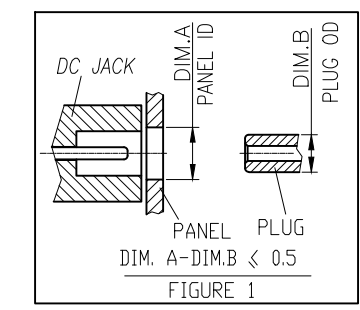
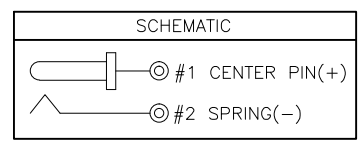
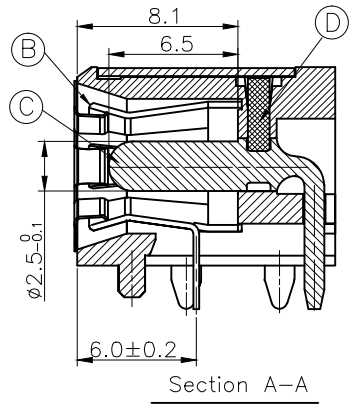
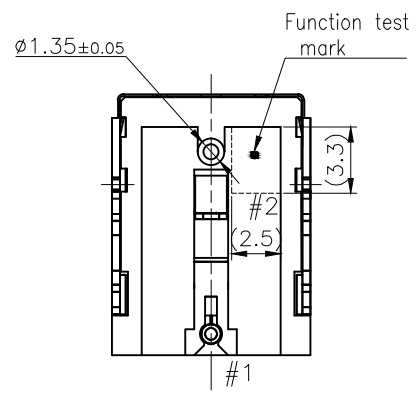
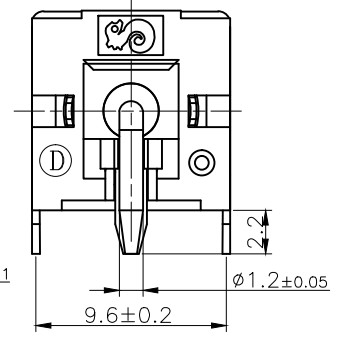
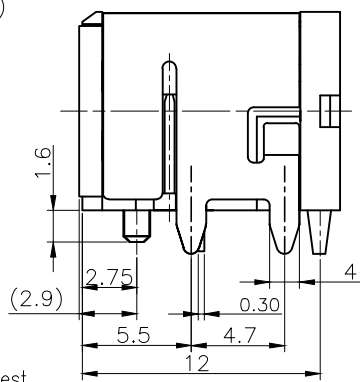
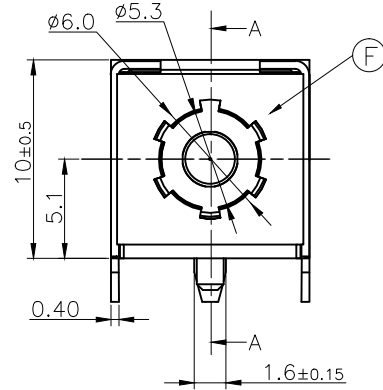
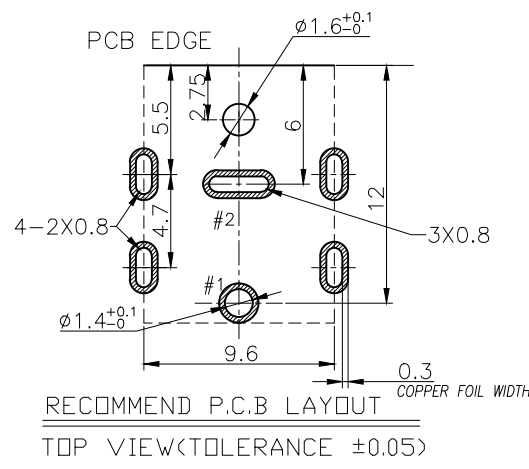
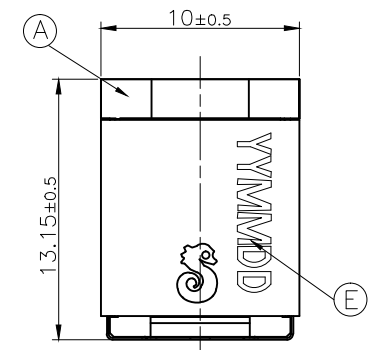
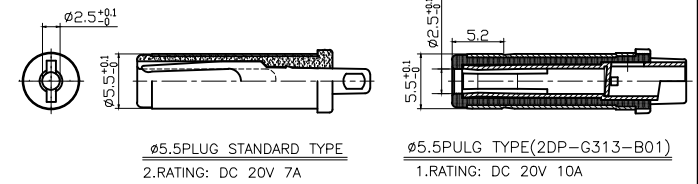
8.FOR REFLOW SOLDERING LEAD-FREE PROCESS.

9.PACKAGING: TAPE & REEL

10.PRINTED DATE CODE" **YYMMDD** " ON TOP OF CONNECTOR.

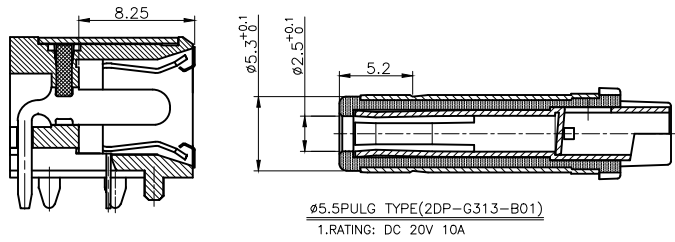


11.THE PANEL'S ID MUST BE GREATER THAN THE PLUG'S OD WHICH MUST HAVE A DIFFERENCE OF LESS THAN OR EQUAL TO 0.5 mm.(AS SHOWN IN FIGURE 1.)



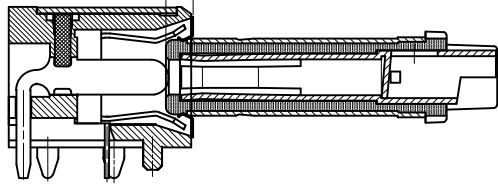
F	GROUND	1	SUS 0.15T	N/A
E	SHELL	1	SUS430 0.4T	可Ni 60u"over Cu80u" MIN
D	STOPPER	1	PA10T UL94V-0	NATURE
C	PIN	1	HBI59	Gold Flash OVER Ni 60u" MIN.
B	SPRING	1	C5210 0.3T	GOLD FLASH ON CONTACT AREA OVER Ni 60u" MIN.
A	BODY	1	PA10T UL94V-0	BLACK
NO	DESCRIPTION	QTY	MATERIAL	PLATING & COLOR
UNLESS OTHERWISE SPECIFIED TOLERANCES		Singatron Enterprise Co., Ltd. 信音企業股份有限公司		
DECIMALS:		ANGLES:		TITLE
X	:±0.5	X	:±2°	<b>DC POWER JACK</b> <b>PART NO.2DC-G213-B99F</b>
X.X	:±0.3	X.X	:±1°	
X.XX	:±0.2			
CHKD	Lussen	SCALE:4:1	UNIT: mm	
APVD	Liao	SIZE: A3	SHEET:1 OF 2	
<b>CUSTOMER COPY</b>				

REV.	ECN NO OR DESCRIPTION	REVISED	DATE
A	PDR NO.:T230522-3A	JIE-FU	2023.08.07



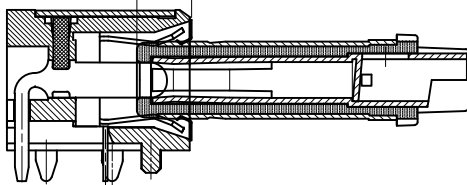
1.GROUND CONTACT

(2.0) PLUG插入深度



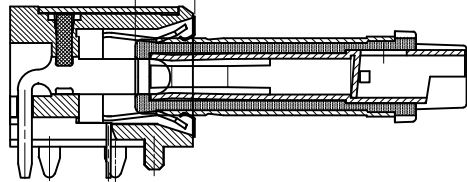
2.SPRING(-)CONTACT

(3.9) PLUG插入深度



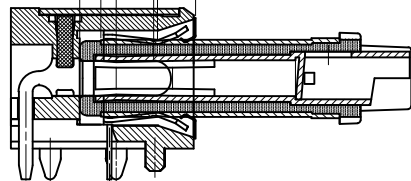
3.PIN(+) CONTACT

(4.3) PLUG插入深度



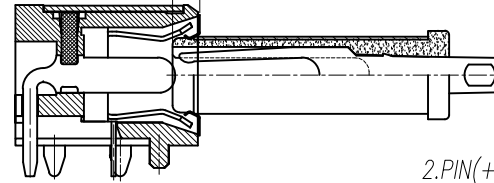
4. MATING CONDITION

(8.3) PLUG插入深度  
(4.0) 負極有效接觸距離  
(2.7) 正極有效接觸距離



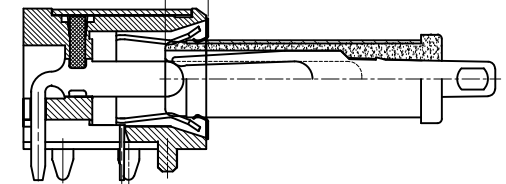
1.GROUND CONTACT

(2.0) PLUG插入深度



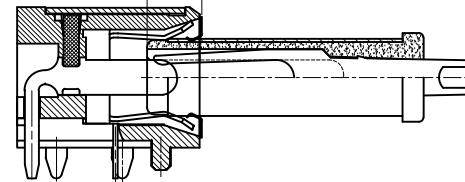
2.PIN(+) CONTACT

(3.1) PLUG插入深度



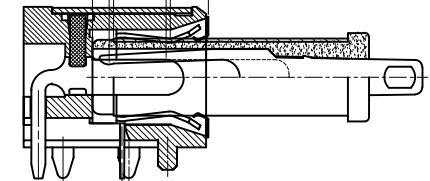
3.SPRING(-)CONTACT

(3.9) PLUG插入深度



4. MATING CONDITION

(8.3) PLUG插入深度  
(4.0) 負極有效接觸距離  
(4.1) 正極有效接觸距離



UNLESS OTHERWISE SPECIFIED TOLERANCES

DECIMALS: ANGLES:  
X :±0.5 X :±2°  
X.X :±0.3 X.X :±1°  
X.XX :±0.2



Singatron Enterprise Co., Ltd.  
信音企業股份有限公司

TITLE	MATING DRAWING		
DWN	JIE-FU	PART NO. 2DC-G213-B99F	
CHKD	Lussen	SCALE:4:1	UNIT: mm
APVD	Liao	SIZE: A3	SHEET:2 OF 2
REV:A			
CUSTOMER COPY			