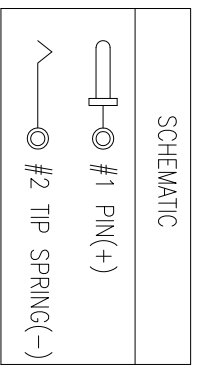
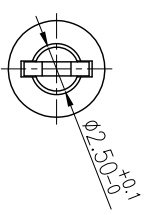
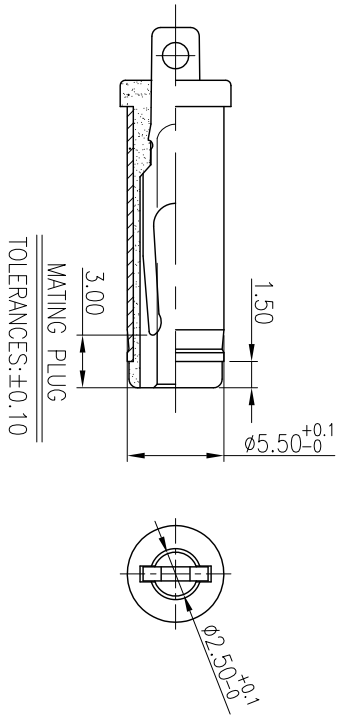
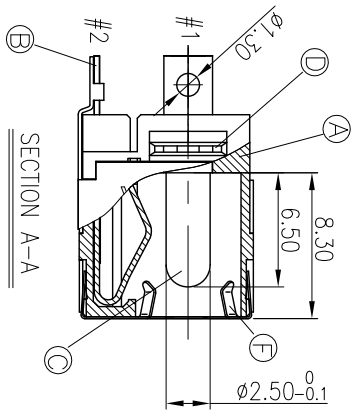
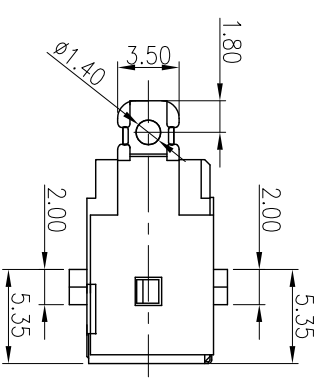
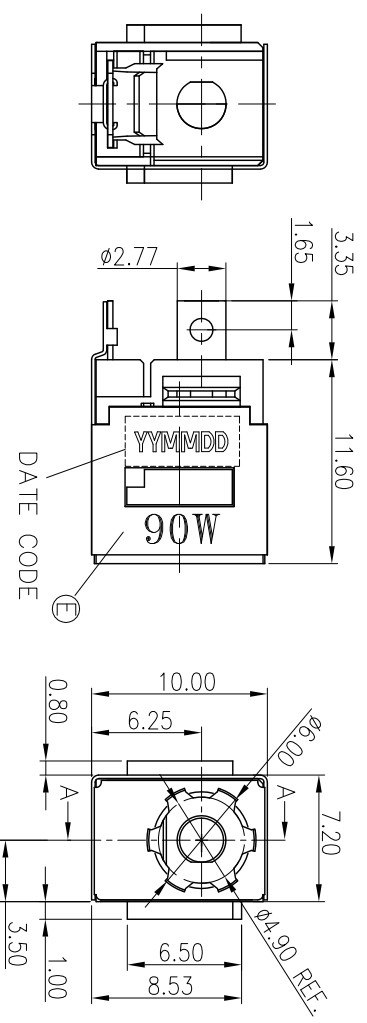
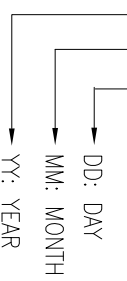


REV.	ECN NO OR DESCRIPTION	REVISED	DATE
A	PDR NO.:1101020-8A	Billy	2011.04.11



- SPECIFICATIONS:
- ELECTRICAL CHARACTERISTICS:
 - RATING: DC 20V 7A
 - CONTACT RESISTANCE: 30mΩ MAX.(INITIAL)
 - DIELECTRIC WITHSTANDING VOLTAGE: 500V AC FOR ONE MINUTE.
 - INSULATION RESISTANCE: 100MΩ MIN. MEASURED BY 500 VDC
 - MECHANICAL CHARACTERISTICS:
 - INSERTION FORCE :3.0 KGf Max
 - WITHDRAWAL FORCE : 0.5~3.0 KGf
 - LIFE TEST: 5,000 CYCLES MIN.
 - OTHER GENERAL SPEC. TO REFER "2DC-G756 SERIES SPEC".
 - TO CONFORM TO SINGATRON HAZARDOUS SUBSTANCE FREE SPEC.
 - HALOGEN FREE PRODUCT IDENTIFICATION MARK ON PRODUCT:
 - HALOGEN FREE PRODUCT IDENTIFICATION LABEL ON PACKAGING:
 - FOR HAND SOLDERING LEAD-FREE PROCESS.
 - PACKAGING: BAG
 - PRINTED DATE CODE "YYMMDD" ON TOP OF CONNECTOR.



NO	DESCRIPTION	QTY	MATERIAL	PLATING & COLOR
F	GROUND	1	STAINLESS 0.1T	N/A
E	SHIELDING	1	BRASS STRIP 0.2T	Ni 60u" OVER ALL
D	TERMINAL	1	STAINLESS 0.3T	N/A
C	PIN(+)	1	BRASS	GOLD FLASH OVER ALL Ni 50u" OVER ALL
B	TIP SPRING(-)	1	COPPER ALLOY 0.3T	Ag 20u" OVER ALL Ni 20u" OVER ALL
A	BODY	1	HIGH THERMOPLASTIC	BLACK
NO	DESCRIPTION	QTY	MATERIAL	PLATING & COLOR
UNLESS OTHERWISE SPECIFIED TOLERANCES				
信音企業股份有限公司 DC POWER JACK PART NO. 2DC-G756-BA6F DIMN Billy CHKD SKY APVD Lussen				
DECIMALS: ANGLES: X : ±0.5 X : ±2° X.X : ±0.3 X.X : ±1° X.XX : ±0.2				
CUSTOMER COPY				