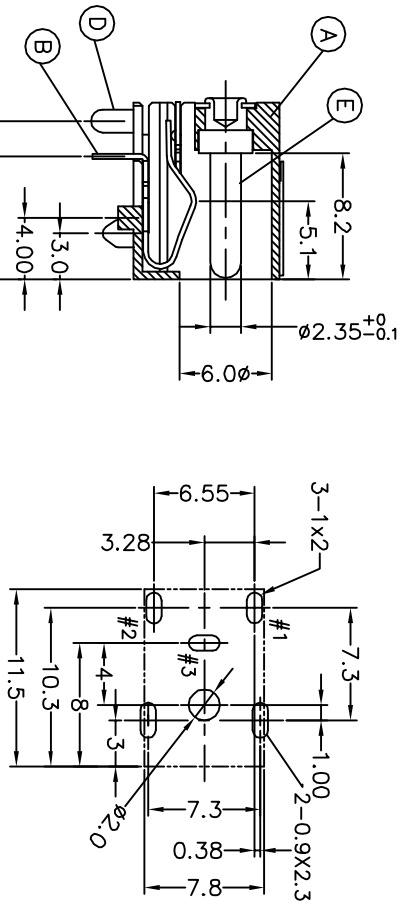
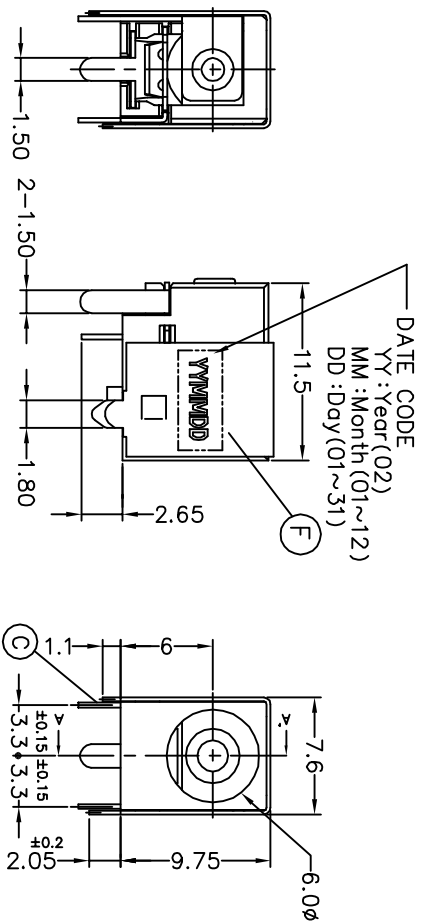
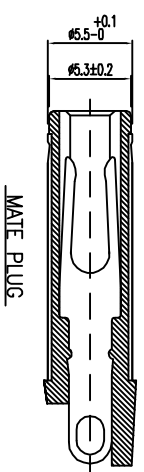
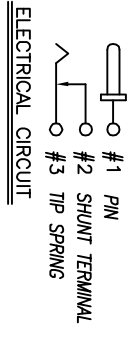


REV.	ECN NO.	OR DESCRIPTION	REVISED	DATE
A	ECN NO. S180801-01	Zhijun		2018.09.20



RECOMMENDED P.C.B LAYOUT
TOP VIEW (TOLERANCE: ±0.05)
ORDERING CODE:



- SPECIFICATIONS:
1. RATING: DC 20V 5A
 2. INSERTION FORCE: 0.4KG-3.0KG
 3. WITHDRAWAL FORCE: 0.4KG-3.0KG
 4. INSULATION RESISTANCE BETWEEN ANY ADJACENT TERMINALS SHALL NOT BE LESS THAN 100 MEGOHMS BY 500 VOLTS MEGGER.
 5. JACK SHALL WITHSTAND 250 VOLTS BETWEEN ANY ADJACENT TERMINAL FOR ONE MINUTE.
 6. CONTACT RESISTANCE SHALL NOT EXCEED 0.03 OHMS.
 7. JACK SHALL WITHSTAND 5,000 CYCLES OF INSERTION AND WITHDRAWAL WITH TESTING PLUG AND CONTACT RESISTANCE SHALL NOT EXCEED 0.1 OHMS.
 8. MEASURING CONDITION: FROM 5°C TO 35°C
 9. TEMPERATURE: FROM 40% TO 85%
 10. ENVIRONMENTAL SPECIFICATIONS:
 11. 8.1 HUMIDITY TEST: HUMIDITY 90% TO 95% TEMPERATURE 40°C ± 2°C FOR 96 HOURS.
 12. 8.2 HEAT TEST: TEMPERATURE 70°C ± 2°C (HUMIDITY BELOW 50%) FOR 96 HOURS.
 13. 8.3 COLD TEST: TEMPERATURE -40°C ± 2°C FOR 96 HOURS.
 14. 9. SOLDERABILITY TEST: THE TERMINATION IS AT LEAST 95% COVERED BY A CONTINUOUS NEW SOLDER COATING.
 15. TEST CONDITION: DIP IN MOLTEN SOLDER FOR 5 Sec. AT 245±5°C (TERMINATION SHALL BE IMMERSED IN FLUX BEFORE TEST)
 16. 10. PACKING: TAPE & REEL
 17. 11. TO CONFORM TO THE "SE-01-001" & "ROHS DIRECTIVE"
 18. 12. GREEN PRODUCT IDENTIFICATION MARK IN JACK:
 19. 13. GREEN PRODUCT IDENTIFICATION LABEL IN PACKING: **G.P. PASS**
 20. 14. FOR LEAD-FREE PROCESS.
 21. 15. SOLDER HEAT RESISTANCE: 280°C 10 SECS.

F	SHIELDING	1	BRASS STRIP 0.25t	TIN ALLOY PLATING
E	PIN	1	BRASS BAR	NICKEL PLATING
D	TERMINAL	1	BRASS STRIP 0.3t	SILVER PLATING
C	SHUNT TERMINAL	1	BRASS STRIP 0.3t	SILVER PLATING
B	TIP SPRING	1	COPPER ALLOY 0.3t	SILVER PLATING
A	BODY	1	HIGH TEMP. THERMOPLASTIC UL 94V-0	BLACK COLOR
NO DESCRIPTION QTY MATERIAL PLATING & COLOR				
UNLESS OTHERWISE SPECIFIED TOLERANCES				
Singatron Enterprise Co., Ltd. 信音企業股份有限公司				
TITLE DC POWER JACK				
DWN	Zhijun	PART NO.	2DC-S006-C12	
CHKD	Sky	SCALE: 3/1	UNIT: mm	
APVD	Lussen	SIZE: A3	SHEET: 1 OF 1	REV: A
CUSTOMER COPY				