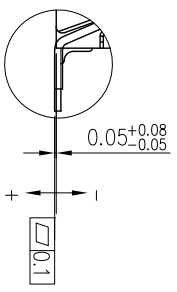
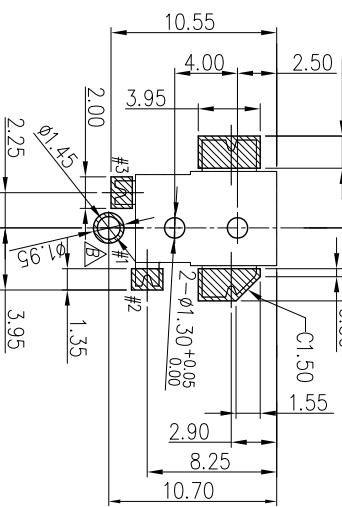
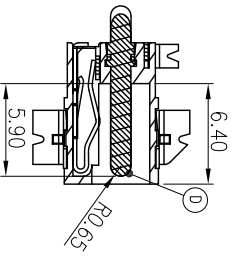
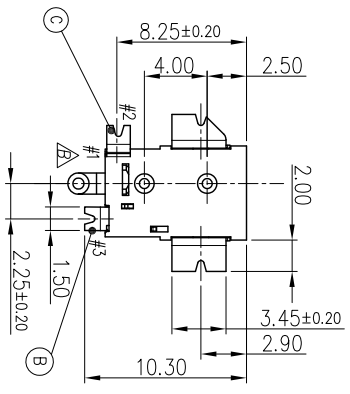


DETAIL "A"



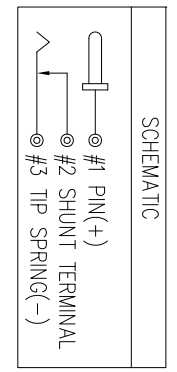
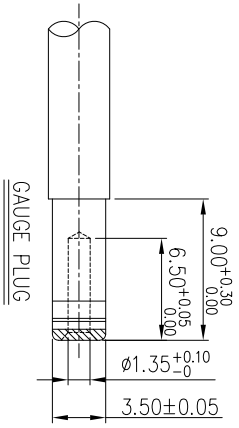
DETAIL "A"  
SCALE 6:1



RECOMMENDED P.C.B LAYOUT  
PRINTED SIDE  
(TOLERANCE: ±0.05)

SPECIFICATIONS:

1. ELECTRICAL CHARACTERISTICS:
  - 1-1. RATING: 24V, 4A Min.
  - 1-2. CONTACT RESISTANCE: 30 MILLIOHMS Max. FOR INITIAL, 50 MILLIOHMS Max. AFTER 5000 CYCLES.
  - 1-3. INSULATION RESISTANCE: 100 MEGAOHMS Min. BY 500V DC. AFTER 1 MINUTE.
  - 1-4. DIELECTRIC WITHSTANDING VOLTAGE: 500V RMS AFTER 1 MINUTE.
2. MECHANICAL CHARACTERISTICS:
  - 2-1. INSERTION FORCE : 0.3~2.0 KGF
  - 2-2. WITHDRAWAL FORCE : 0.3~2.0 KGF
3. LIFE TEST: 5,000 CYCLES MIN.
4. OTHER GENERAL SPEC. TO REFER "2DC-S050 SERIES SPEC".
5. TO CONFORM TO SINGATRON HAZARDOUS SUBSTANCE FREE SPEC.
6. HALOGEN FREE PRODUCT IDENTIFICATION LABEL ON PRODUCT: (C)
7. HALOGEN FREE PRODUCT IDENTIFICATION LABEL ON PACKAGING: (C)
8. FOR REFLOW SOLDERING LEAD-FREE PROCESS.
9. PACKAGING: TAPE & REEL.



NO	DESCRIPTION	QTY	MATERIAL	PLATING & COLOR
A	BODY	1	HIGH TEMP. THERMOPLASTIC UL 94V-0	BLACK COLOR
E	SHIELDING	1	COPPER ALLOY 0.25T	Ag 20U" Min.
D	PIN	1	BRASS BAR	GOLD FLASH, Max 50U" Min
C	SHUNT TERMINAL	1	BRASS STRIP 0.2t	Ag 20U" Min.
B	TIP SPRING	1	COPPER ALLOY 0.25T	Ag 20U" Min.

UNLESS OTHERWISE SPECIFIED TOLERANCES	DECIMALS:	ANGLES:
X	: ±0.5	X : ±2°
X.X	: ±0.3	X.X : ±1'
X.XX	: ±0.2	

TITLE	DC POWER JACK
DWN	ZK 13/8/2 PART NO. 2DC-S050-H04F
CHKD	ZJZ 13/8/2 SCALE 3:1 UNIT: mm
APVD	lao 13/8/2 SIZE: A3 SHEET 1 OF 1 REV: C

Singatron Enterprise Co., Ltd.  
信音企業股份有限公司

CUSTOMER COPY