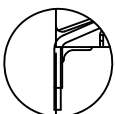
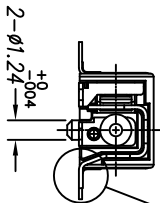
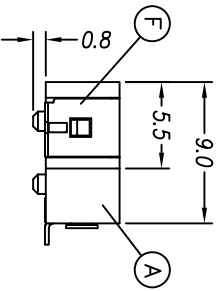
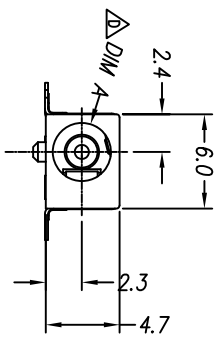
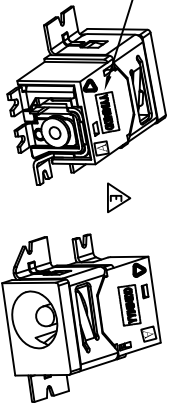
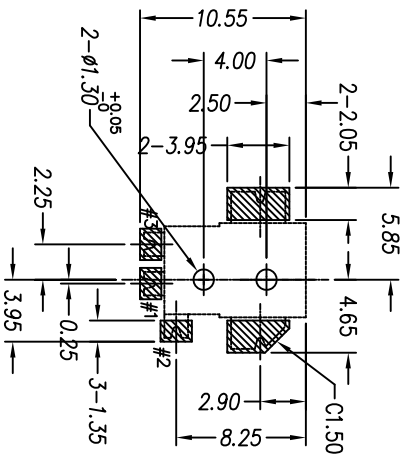
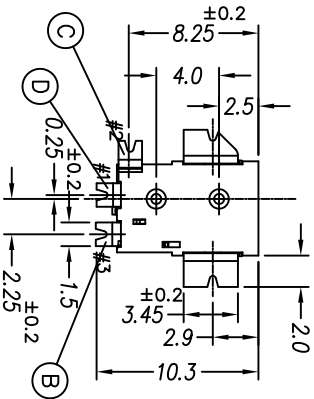


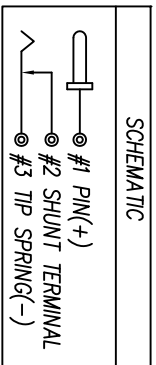
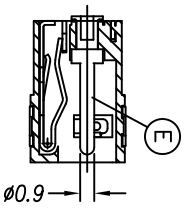
DATE CODE
YY Year(08)
MM Month(01~12)
DD Day(01~31)



DETAIL "A"
SCALE 6:1



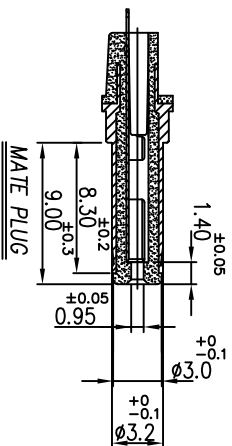
RECOMMENDED P.C.B LAYOUT
PRINTED SIDE
(TOLERANCE: ±0.05)



| P/N | DIM A |
|--------------|-----------|
| 2DC-S050-P02 | ø3.4±0.10 |
| 2DC-S050-P01 | ø3.7±0.10 |

SPECIFICATIONS:

- ELECTRICAL CHARACTERISTICS:
 - RATING: DC 12V 0.5A
 - CONTACT RESISTANCE: 30mΩ MAX.(INITIAL)
 - DIELECTRIC WITHSTANDING VOLTAGE: 500V AC FOR ONE MINUTE.
 - INSULATION RESISTANCE: 100MΩ/MIN. MEASURED BY 500 VDC
- MECHANICAL CHARACTERISTICS:
 - INSERTION FORCE : 0.3~2.0 KGf
 - WITHDRAWAL FORCE : 0.3~2.0 KGf
 - LIFE TEST: 10,000 CYCLES MIN.
 - OTHER GENERAL SPEC. TO REFER "DC POWER JACK SPEC."
 - TO CONFORM TO SINGATRON HAZARDOUS SUBSTANCE FREE SPEC.
 - GREEN PRODUCT IDENTIFICATION MARK ON JACK
 - GREEN PRODUCT IDENTIFICATION LABEL ON PACKAGING: **G.P. PASS**
 - FOR REFLOW SOLDERING LEAD-FREE PROCESS.
 - PACKAGING: TAPE & REEL.



| REV | ECN NO OR DESCRIPTION | REVISED | DATE |
|-----|-------------------------------------|---------|-----------|
| C | ECN NO: T060242 Add D/C | Even | 2008.3.4 |
| D | ADD A TYPE PDR NO.PDR T090610-1A | HAIHUA | 2009.6.25 |
| E | ECN:C120384MODIFY DRAWING | DAOWEN | 2012.3.15 |

| | | | | |
|----|----------------|-----|--------------------------|-----------------|
| F | SHIELDING | 1 | BRASS STRIP 0.2t | Ag 20u" Min. |
| E | PIN | 1 | BRASS BAR | Ni 60u" Min. |
| D | TERMINAL | 1 | BRASS STRIP 0.2t | Ag 20u" Min. |
| C | SHUNT TERMINAL | 1 | BRASS STRIP 0.25t | Ag 20u" Min. |
| B | TIP SPRING | 1 | BERYLLIUM COPPER 0.25t | Ag 20u" Min. |
| A | BODY | 1 | HIGH TEMP. THERMOPLASTIC | BLACK COLOR |
| NO | DESCRIPTION | QTY | MATERIAL | PLATING & COLOR |

UNLESS OTHERWISE SPECIFIED TOLERANCES

Singatron Enterprise Co., Ltd.
信登企業股份有限公司

| DECIMALS: | ANGLES: | TITLE |
|-------------|-----------|---------------|
| X : ±0.5 | X : ±2° | DC POWER JACK |
| X.X : ±0.3 | X.X : ±1° | |
| X.XX : ±0.2 | | |

| APVD | DATE | SCALE | SIZE | SHEET | REV. |
|-----------|-----------|-------|------|--------|------|
| 13/3/2012 | 13/3/2012 | 3:1 | A3 | 1 OF 1 | B |

CUSTOMER COPY