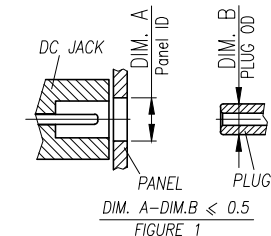
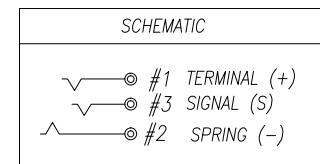


REV.	ECN NO OR DESCRIPTION	REVISED	DATE
A	PDR NO:T121102-8A	Summer	2012.01.07
B	ECN NO:S130219	SEAN	2013.09.06
C	ECN NO:S190308-C	KEN	2019.08.28

SPECIFICATIONS:

- ELECTRICAL CHARACTERISTICS:
 - 1-1. RATING: DC 42V 10A OR AC 30V 10A.
 - 1-2. CONTACT RESISTANCE: 30mΩ MAX.(INITIAL)
 - 1-3. DIELECTRIC WITHSTANDING VOLTAGE: 250V AC FOR ONE MINUTE
 - 1-4. INSULATION RESISTANCE: 100MΩ MIN. MEASURED BY 500 VDC
- MECHANICAL CHARACTERISTICS:
 - 2-1. INSERTION FORCE :3.0 KG Max.
 - 2-2. WITHDRAWAL FORCE : 0.3 KG Min.
- LIFE TEST: 5,000 CYCLES MIN.
- TO CONFORM TO SINGATRON HAZARDOUS SUBSTANCE FREE SPEC.
- HALOGEN FREE PRODUCT IDENTIFICATION MARK ON JACK:
- HALOGEN FREE PRODUCT IDENTIFICATION LABEL ON PACKAGING:
- FOR REFLOW SOLDERING LEAD-FREE PROCESS.
- THE PANEL'S ID MUST BE GREATER THAN THE PLUG'S OD WHICH MUST HAVE A DIFFERENCE OF LESS THAN OR EQUAL TO 0.5 mm.(AS SHOWN IN FIGURE 1.)
- PRINTED DATE CODE "YYMMDD" ON TOP OF CONNECTOR.

DD: DAY
 MM: MONTH
 YY: YEAR

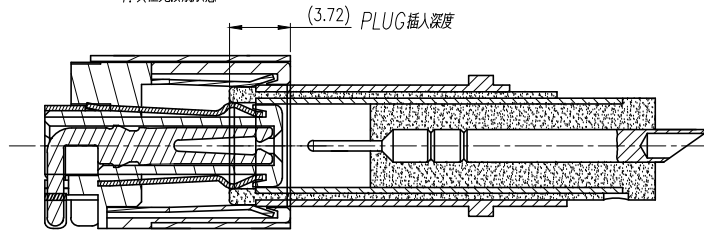


NO	DESCRIPTION	QTY	MATERIAL	PLATING & COLOR
F	SHELL	1	BRASS; 0.35T	Ni 60u"
E	SIGNAL	1	COPPER ALLOY; 0.30T	Au 50u" ON CONTACT AREA; Matt Sn 100u" ON SOLDER TAIL; ALL OVER Ni 60u"
D	SPRING(-)	1	COPPER ALLOY; 0.30T	Au 50u" ON CONTACT AREA; Matt Sn 100u" ON SOLDER TAIL; ALL OVER Ni 60u"
C	SPRING(+)	1	COPPER ALLOY; 0.30T	Au 50u" ON CONTACT AREA; Matt Sn 100u" ON SOLDER TAIL; ALL OVER Ni 60u"
B	COVER	1	HIGH THERMOPLASTIC TEMP. UL 94V-0	BLACK
A	BODY	1	HIGH THERMOPLASTIC TEMP. UL 94V-0	BLACK

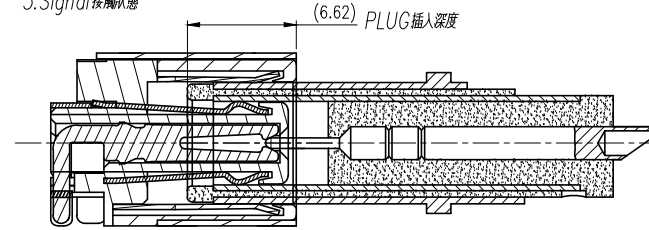
UNLESS OTHERWISE SPECIFIED TOLERANCES		Singatron Enterprise Co., Ltd. 信音企業股份有限公司	
DECIMALS:	ANGLES:	TITLE DC POWER JACK	
X :±0.5	X :±2°	DWN	KEN PART NO.2DC-S060-024F
X.X :±0.3	X.X :±1°	CHKD	SKY SCALE:4:1 UNIT: mm
X.XX :±0.2		APVD	LUSSEN SIZE: A3 SHEET:1 OF 2 REV:C
CUSTOMER COPY			

REV.	ECN NO OR DESCRIPTION	REVISED	DATE
A	PDR NO:T121102-8A	Summer	2012.01.07
B	ECN NO:S130219	SEAN	2013.09.06
C	ECN NO:S190308-C	KEN	2019.08.28

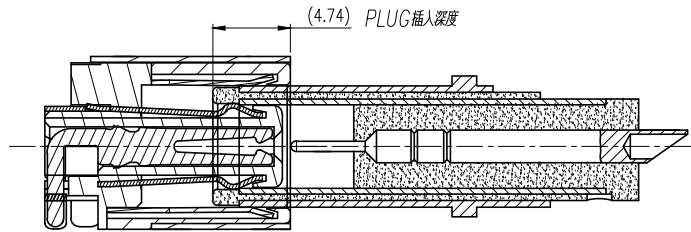
1. 負極先接觸狀態



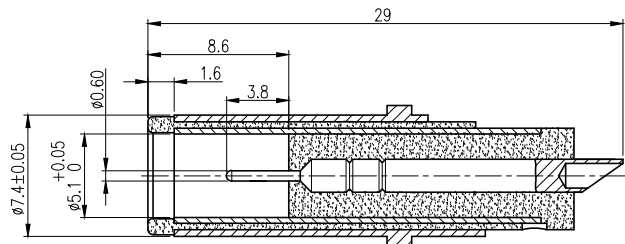
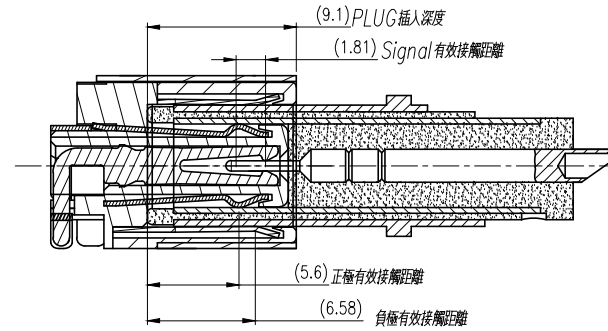
3. Signal接觸狀態



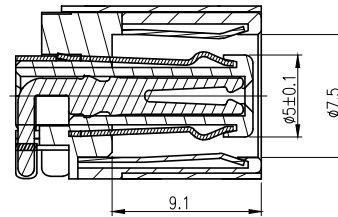
2. 正極接觸狀態



4. PLUG插至定位狀態



MATING PLUG: $\phi 7.4 \times \phi 5.1 \times P0.6 \times 29.0L$
(TOLERANCE ± 0.05)



NO	DESCRIPTION	QTY	MATERIAL	PLATING & COLOR
UNLESS OTHERWISE SPECIFIED TOLERANCES		Singatron Enterprise Co., Ltd. 信音企業股份有限公司		
DECIMALS:	ANGLES:	TITLE	MATING DRAWING	
X : ± 0.5	X : $\pm 2^\circ$	DWN	KEN	PART NO. 2DC-S060-024F
X.X : ± 0.3	X.X : $\pm 1^\circ$	CHKD	SKY	SCALE 4:1 UNIT: mm
X.XX : ± 0.2		APVD	LUSSEN	SIZE: A3 SHEET: 2 OF 2 REV: C
CUSTOMER COPY				