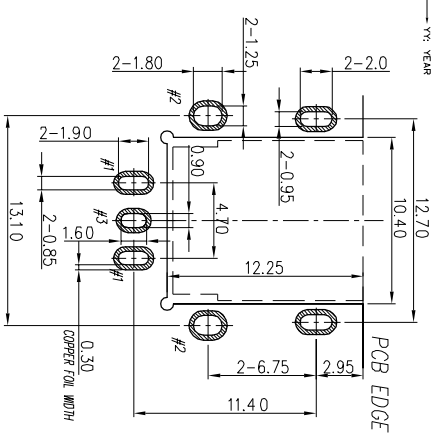
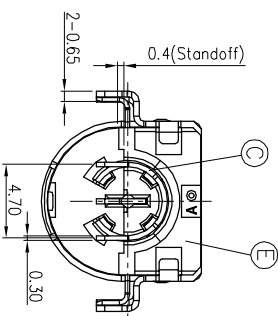
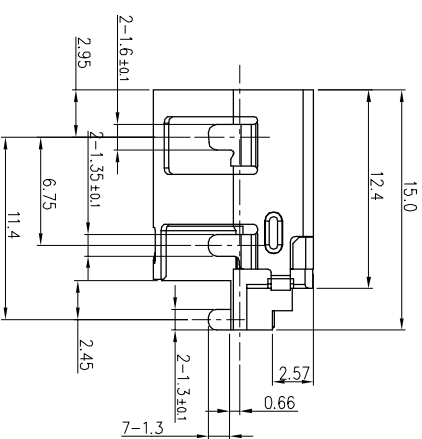
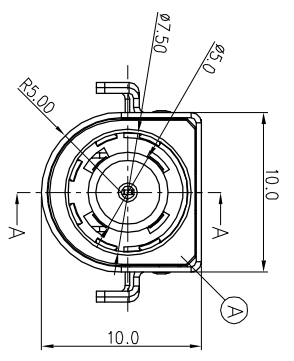
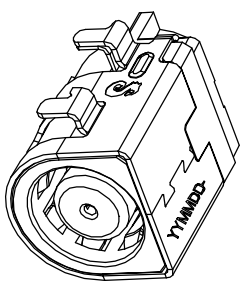
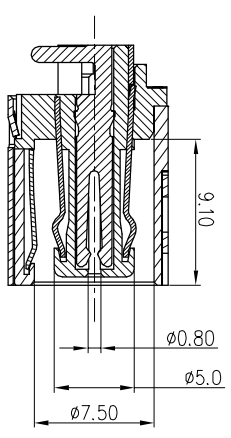
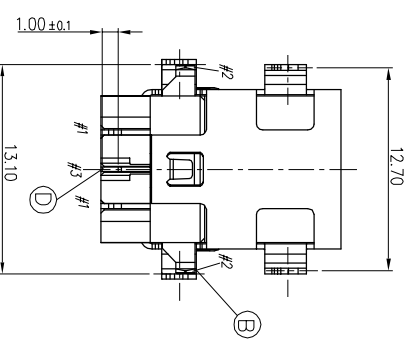
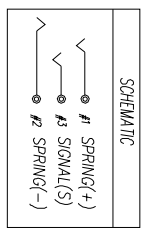


SPECIFICATIONS:  
 ELECTRICAL CHARACTERISTICS:  
 1-1. RATING: DC 20 V/10 A MAX  
 1-2. CONTACT RESISTANCE: 30 mΩ MAX. (INITIAL)  
 1-3. DIELECTRIC WITHSTANDING VOLTAGE: 500 V AC FOR ONE MINUTE.  
 1-4. INSULATION RESISTANCE: 100 MΩ MIN. MEASURED BY 500 V DC.  
 MECHANICAL CHARACTERISTICS:  
 2-1. INSERTION FORCE: 3.0 KG MAX  
 2-2. WITHDRAWAL FORCE: 0.3 kg~3.0 kg  
 3. LIFE TEST: 5000 CYCLES MIN.  
 4. OTHER GENERAL SPEC. TO REFER "20C-S080-030F" SPEC.  
 5. TO CONFORM TO SINGATRON HAZARDOUS SUBSTANCE FREE SPEC.  
 6. HALOGEN FREE PRODUCT IDENTIFICATION MARK ON JACK: .  
 7. HALOGEN FREE PRODUCT IDENTIFICATION LABEL ON PACKAGING: .  
 8. FOR REFLOW SOLDERING LEAD-FREE PROCESS.  
 9. PRINTED DATE CODE: ON TOP OF CONNECTOR.



RECOMMEND PCB LAYOUT  
 TOP VIEW (TOLERANCES: ±0.05)



F	SHELL	1	C2680-EH 0.35T	Ni 60u"
E	COVER	1	PA4T, UL94V-0	BLACK
D	SIGNAL	1	C5191-H 0.3T	Au 50u" ON CONTACT AREA;
C	SIGNAL(+)	1	C5210-EH 0.3T	MATE Sn 120u" ON SOLDER TAIL
B	SIGNAL(-)	1	C5210-EH 0.25T	ALL OVER Ni 50u"
A	BODY	1	PA4T, UL94V-0	BLACK
NO	DESCRIPTION		MATERIAL	PLATING & COLOR
UNLESS OTHERWISE SPECIFIED TOLERANCES				
Singatron Enterprise Co., Ltd. 信管企業股份有限公司				
TITLE: Ø7.4 DC POWER JACK				
DWM	Allen	PART NO.	2DC-S080-030F	
CHKD	Sky	SCALE	4:1	UNIT: mm
APVD	Lussen	SIZE: A3	SHEET: 1 OF 2	REV: A
CUSTOMER COPY				

REV	ECN NO OR DESCRIPTION	REVISED	DATE
A	PDR NO.: T160223-10A	Allen	2016.07.20