

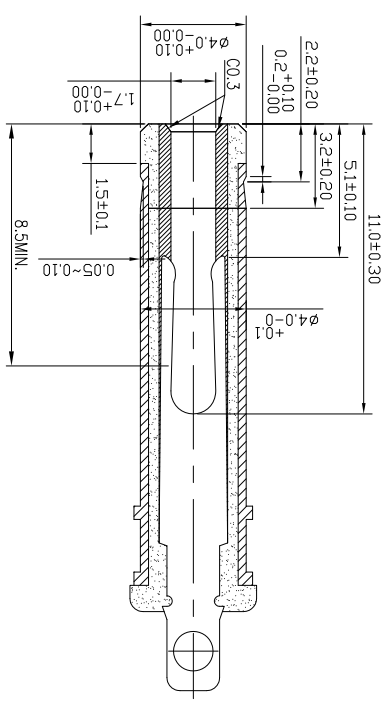
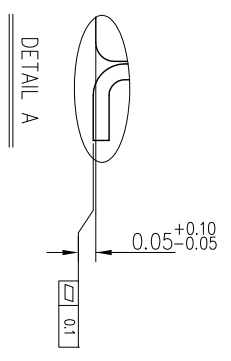
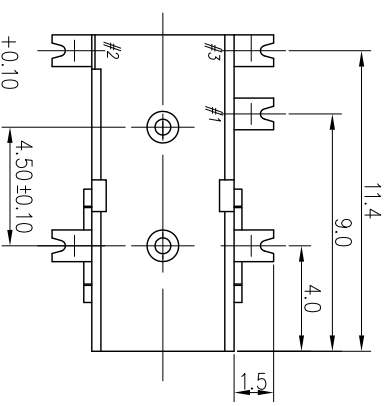
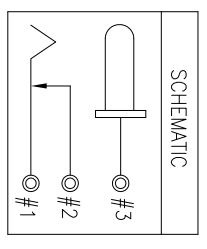
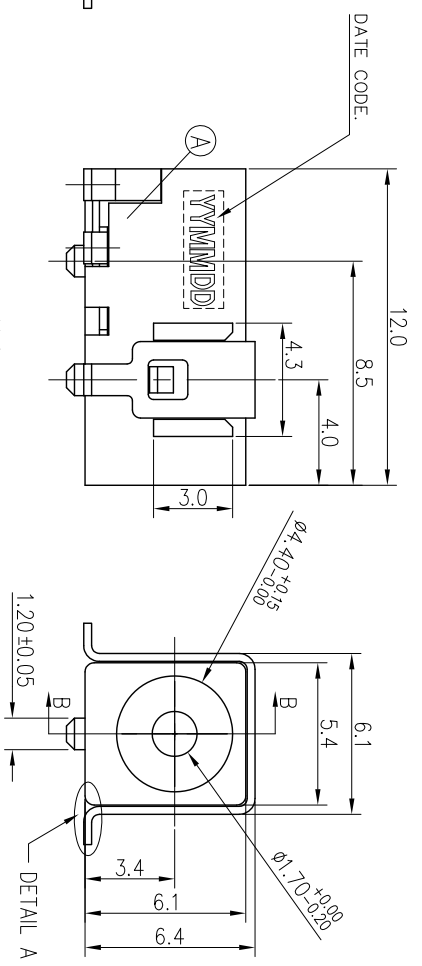
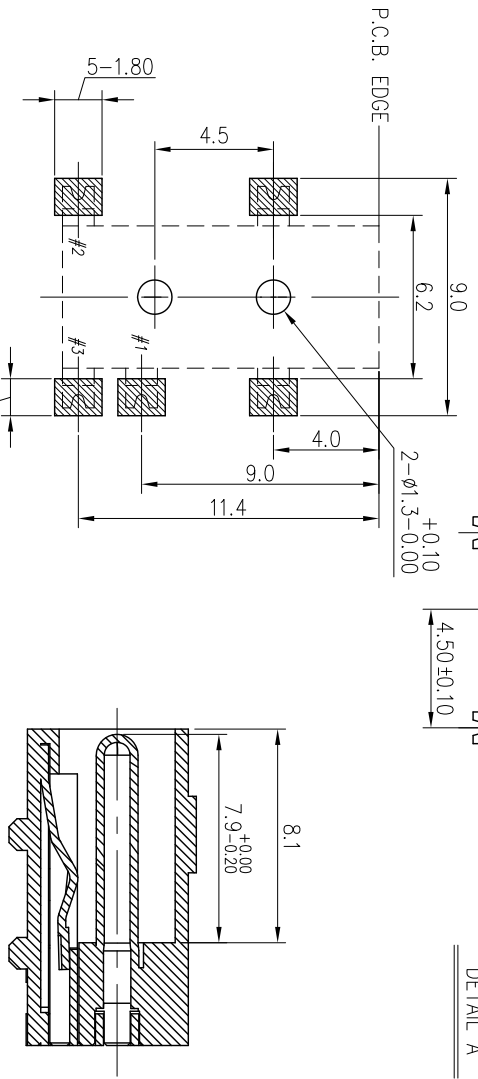


| REV. | ECN NO | OR DESCRIPTION | REVISED | DATE |
|------|--------|-----------------|---------|------------|
| A | | Product Release | ALLEN | 2010.10.19 |

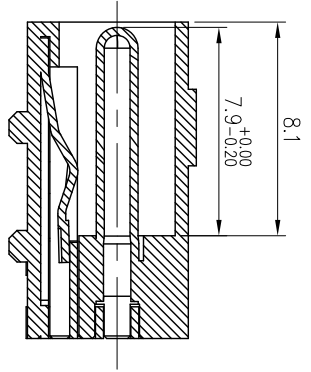
- NOTE:
- 1.RATING: DC 6.3V 2A
 - 2.CONTACT RESISTANCE: 30m Ω MAX.
 - 3.INSULATION RESISTANCE: 100M Ω MIN. AT DC 500V.
 - 4.DIELECTRIC STRENGTH: AC 500V FOR 1 MINUTE.
 - 5.INSERTION FORCE: 2KG MAX.
 - 6.LIFE: 12000 CYCLES.
 - 7.TO CONFORM TO SINGATRON HAZARDOUS SUBSTANCE FREE SPEC.
 - 8.MATING PLUG TO SINGATRON P/N: 2DP1509-000111
 - 9.GREEN PRODUCT IDENTIFICATION MARK ON JACK: 
 - 10.GREEN PRODUCT IDENTIFICATION LABEL ON PACKAGING: 
 - 11.FOR REFLOW SOLDERING LEAD-FREE PROCESS.
- 1.PACKING: TAPE & REEL



MATING PLUG



SECTION B-B



Recommended Pads Layout
TOP View (Tolerance ± 0.05)

| NO | DESCRIPTION | QTY | MATERIAL | PLATING & COLOR |
|----|----------------|-----|-------------------------------------|-----------------|
| E | CONTACT PIN | 1 | BRASS 0.3t | SILVER PLATING |
| D | SHIELDING | 1 | BRASS 0.3t | NICKEL PLATING |
| C | SHUNT TERMINAL | 1 | BRASS 0.3t | SILVER PLATING |
| B | TIP SPRING | 1 | COPPER ALLOY 0.3t | SILVER PLATING |
| A | BODY | 1 | HIGH TEMP.THERMOPLASTIC UL 94V-0 | YELLOW 1225(C) |

| | | | |
|---------------------------------------|---------------|--------------------------------|-----------------|
| UNLESS OTHERWISE SPECIFIED TOLERANCES | | SINGATRON ENTERPRISE CO., LTD. | |
| DECIMALS: | | ANGLES: | |
| X | : ± 0.5 | X | : $\pm 2^\circ$ |
| X.X | : ± 0.3 | X.X | : $\pm 1^\circ$ |
| X.XX | : ± 0.2 | | |
| TITLE | | DC POWER JACK | |
| DWN | Allen 10425 | PART NO. | 2DC-S061-Q04H |
| CHKD | Version 10425 | SCALE:5/1 | UNIT: mm |
| APVD | Leo 10425 | SIZE: A3 | SHEET:1 OF 1 |
| | | REV: A | |

CUSTOMER COPY